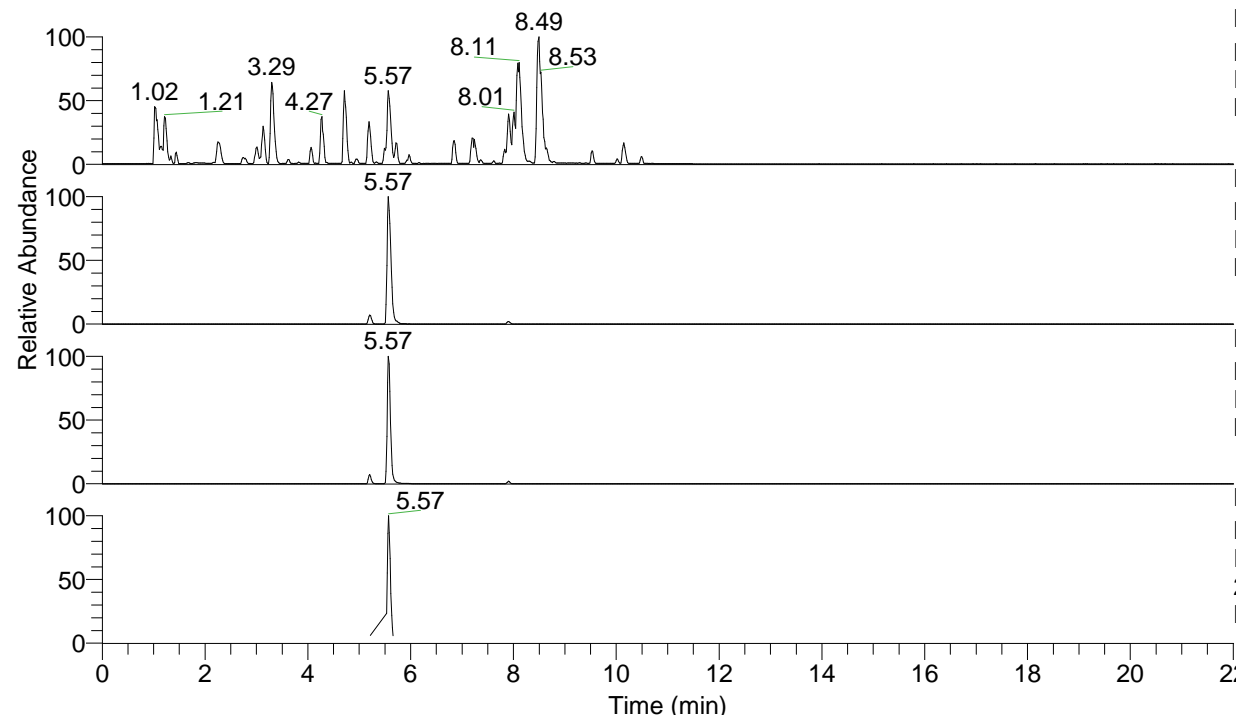


RT: 0.00 - 22.01



NL: 6.76E7
 Base Peak m/z= 100.00000-1500.00000 F:
 FTMS + p ESI Full ms [100.00-1500.00]
 MS Lcornutus

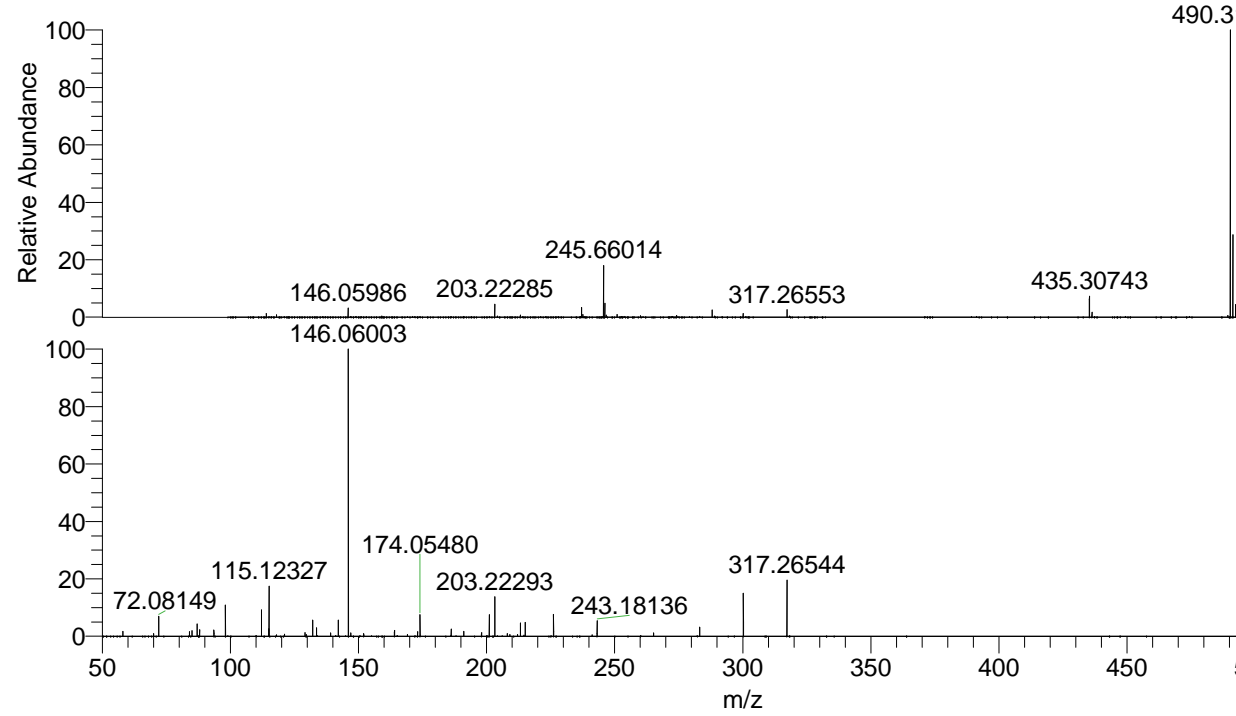
NL: 3.92E7
 Base Peak m/z= 490.31173-490.31663 F:
 FTMS + p ESI Full ms [100.00-1500.00]
 MS Lcornutus

NL: 7.21E6
 Base Peak m/z= 245.65977-245.66223 F:
 FTMS + p ESI Full ms [100.00-1500.00]
 MS Lcornutus

NL: 2.23E6
 Base Peak m/z= 50.00000-1500.00000 F:
 FTMS + p ESI d Full ms2
 245.66@hcd35.00 [50.00-520.00] MS
 Lcornutus

Lcornutus#2206-2241 RT: 5.53-5.61 AV: 7
 F: FTMS + p ESI d Full ms2 245.66@h ...
 m/z= 50.00000-1000.00000

m/z	Intensity	Relative
58.06593	23737.7	1.74
70.06583	12455.9	0.92
72.08149	96202.8	7.07
84.08130	21259.2	1.56
85.08915	26203.1	1.93
87.05582	57320.3	4.21
88.03983	31715.7	2.33
93.60234	29927.8	2.20
98.09689	149086.6	10.96
112.11242	123198.2	9.05
115.05045	36129.8	2.66
115.12327	235529.9	17.31
121.10487	10491.5	0.77
129.13871	16948.6	1.25
129.61820	8077.6	0.59
132.14947	76238.4	5.60
133.59669	40287.2	2.96
139.12291	15670.9	1.15
142.11000	74163.8	5.45
142.13392	28802.0	2.12
146.06003	1360670.9	100.00
147.06334	14488.8	1.06
152.07058	12847.4	0.94
164.07013	27792.4	2.04
169.09664	7157.6	0.53
173.07072	22939.5	1.69
174.05482	100467.6	7.38
186.19638	32224.0	2.37
191.08178	22771.3	1.67
198.05479	17303.4	1.27
201.06587	102537.6	7.54
203.22292	186929.1	13.74
208.14460	11819.0	0.87
209.12860	8334.0	0.61
212.13928	7269.8	0.53
213.20710	62736.3	4.61
215.08157	66346.9	4.88
226.15473	103660.2	7.62
243.07633	12425.6	0.91
243.18132	72376.2	5.32
265.20203	15353.4	1.13
283.21207	42637.0	3.13
300.23899	208812.8	15.35
317.26544	267075.5	19.63



NL: 3.90E7
 Lcornutus#2221 RT: 5.57
 AV: 1 T: FTMS + p ESI
 Full ms [100.00-1500.00]

NL: 1.49E6
 Lcornutus#2208-2243 RT:
 5.54-5.61 AV: 6 F: FTMS
 + p ESI d Full ms2
 245.66@hcd35.00
 [50.00-520.00]