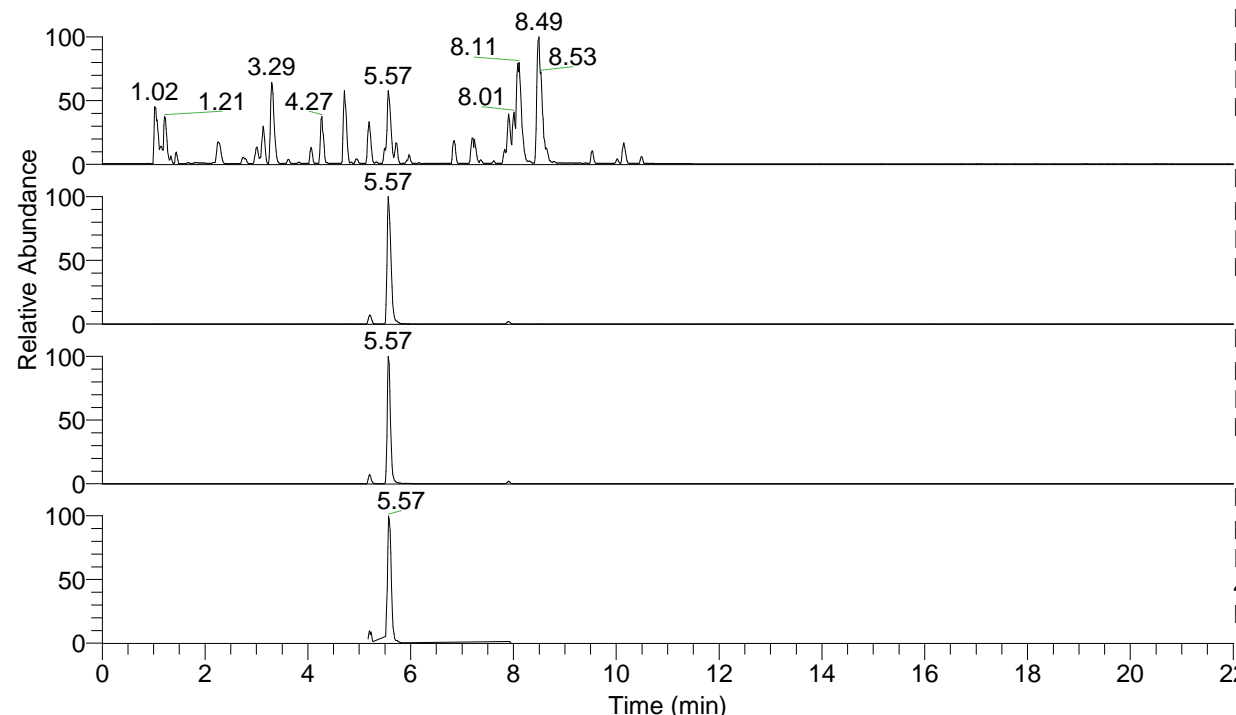


RT: 0.00 - 22.01



NL: 6.76E7
 Base Peak m/z= 100.00000-1500.00000 F:
 FTMS + p ESI Full ms [100.00-1500.00]
 MS Lcornutus

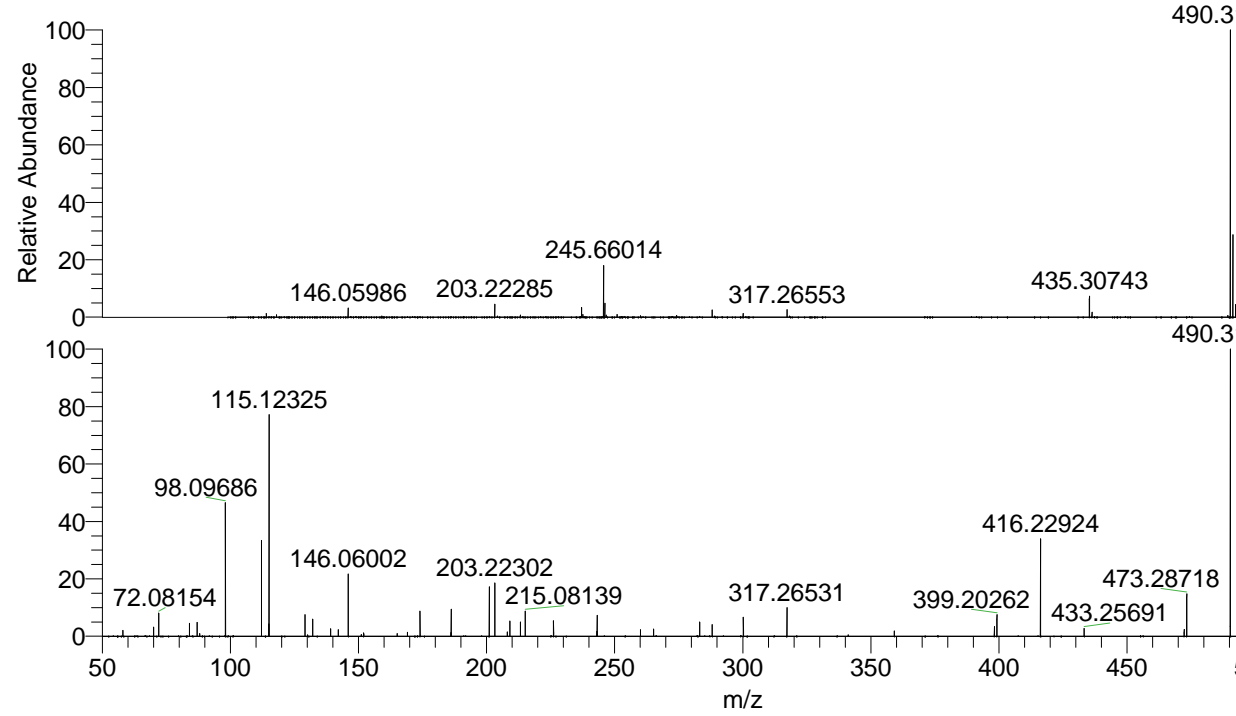
NL: 3.92E7
 Base Peak m/z= 490.31173-490.31663 F:
 FTMS + p ESI Full ms [100.00-1500.00]
 MS Lcornutus

NL: 7.21E6
 Base Peak m/z= 245.65977-245.66223 F:
 FTMS + p ESI Full ms [100.00-1500.00]
 MS Lcornutus

NL: 3.21E6
 Base Peak m/z= 50.00000-1500.00000 F:
 FTMS + p ESI d Full ms2
 490.31@hcd35.00 [50.00-520.00] MS
 Lcornutus

Lcornutus#2211-2246 RT: 5.54-5.63 AV: 7
 F: FTMS + p ESI d Full ms2 490.31@h ...
 m/z= 50.00000-1000.00000

m/z	Intensity	Relative
58.06592	48202.3	2.04
70.06584	73999.7	3.13
72.08154	191954.4	8.11
84.08136	106506.7	4.50
87.05581	115063.0	4.86
88.03982	22822.6	0.96
98.09686	1128995.8	47.70
112.11240	792341.5	33.47
115.05046	104535.1	4.42
115.12325	1840372.0	77.75
129.13856	182663.7	7.72
132.14963	141789.4	5.99
139.12309	65389.1	2.76
142.13395	54778.3	2.31
146.06002	521535.7	22.03
151.08657	14595.6	0.62
152.07069	26791.6	1.13
165.10261	22019.7	0.93
169.09738	34446.4	1.46
174.05493	206878.1	8.74
186.09158	31319.2	1.32
186.12356	15933.0	0.67
186.19634	222477.8	9.40
201.06586	413640.7	17.48
203.22302	439159.0	18.55
208.14490	36528.9	1.54
209.12846	124594.8	5.26
213.20735	116919.4	4.94
215.08139	214462.8	9.06
226.15515	127234.0	5.38
243.07673	40179.4	1.70
243.18146	171239.2	7.23
260.10337	54461.6	2.30
265.20199	61821.7	2.61
283.21251	119069.0	5.03
288.09778	97025.7	4.10
300.23931	161137.3	6.81
317.26531	236092.3	9.97
341.16188	12886.0	0.54
359.17121	42224.6	1.78
398.21924	79961.6	3.38
399.20262	176142.7	7.44
416.22924	809269.8	34.19
433.25691	65786.9	2.78
472.30283	58183.8	2.46
473.28718	352608.3	14.90
490.31328	2366978.3	100.00



NL: 3.90E7
 Lcornutus#2221 RT: 5.57
 AV: 1 T: FTMS + p ESI
 Full ms [100.00-1500.00]

NL: 2.36E6
 Lcornutus#2210-2247 RT:
 5.54-5.63 AV: 7 F: FTMS
 + p ESI d Full ms2
 490.31@hcd35.00
 [50.00-520.00]