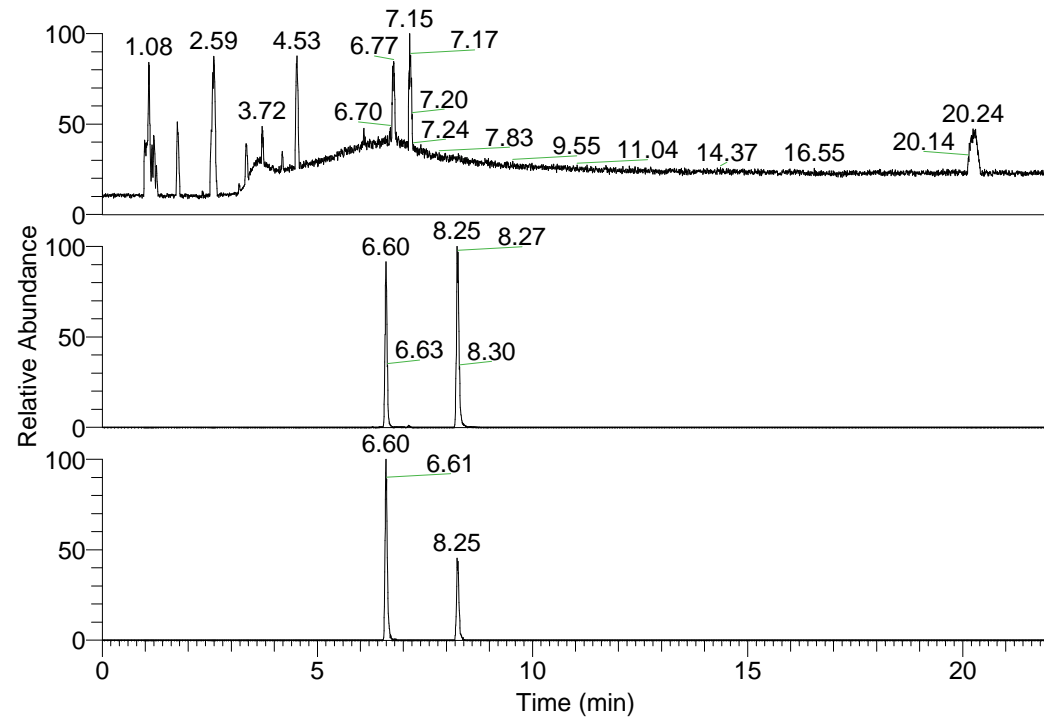


RT: 0.00 - 22.01



NL: 6.93E7
 Base Peak m/z=
 100.00000-1500.00000 F:
 FTMS + p ESI Full ms
 [100.00-1500.00] MS
 Lcornutus_HDX

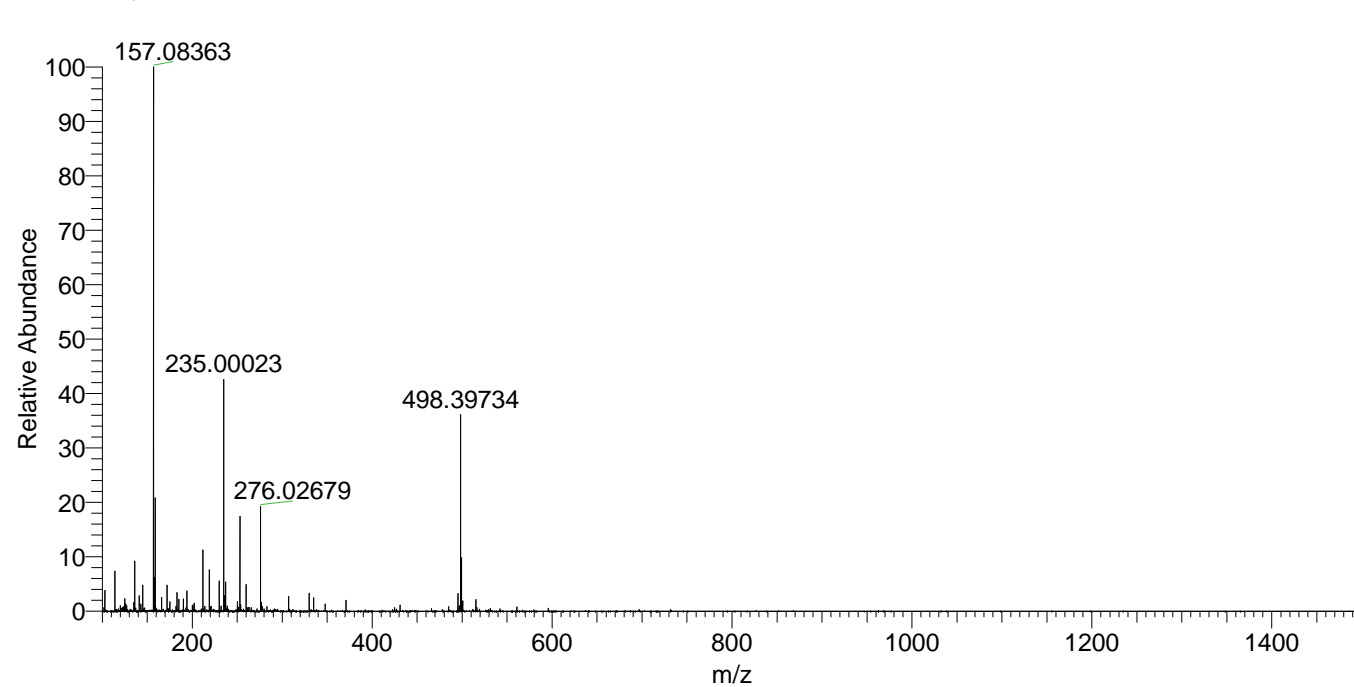
Lcornutus_HDX#1321 RT: 8.25
 T: FTMS + p ESI Full ms [100.00-1500.00]
 m/z = 498.00000-499.00000

m/z	Intensity	Relative	Delta (ppm)	Composition
498.39734	8085201.5	100.00	0.41	C ₂₅ H ₃₂ ² H ₁₀ O ₃ N ₇
			-2.69	C ₂₅ H ₃₄ ² H ₉ O ₃ N ₇
			3.52	C ₂₅ H ₃₀ ² H ₁₁ O ₃ N ₇

NL: 8.09E6
 Base Peak m/z=
 498.39519-498.40017 F:
 FTMS + p ESI Full ms
 [100.00-1500.00] MS
 Lcornutus_HDX

NL: 9.00E5
 Base Peak m/z=
 250.20464-250.20714 F:
 FTMS + p ESI Full ms
 [100.00-1500.00] MS
 Lcornutus_HDX

Lcornutus_HDX #1321 RT: 8.25 AV: 1 NL: 2.23E7
 T: FTMS + p ESI Full ms [100.00-1500.00]



Lcornutus_HDX #1321 RT: 8.25 AV: 1 NL: 8.05E6
 T: FTMS + p ESI Full ms [100.00-1500.00]

