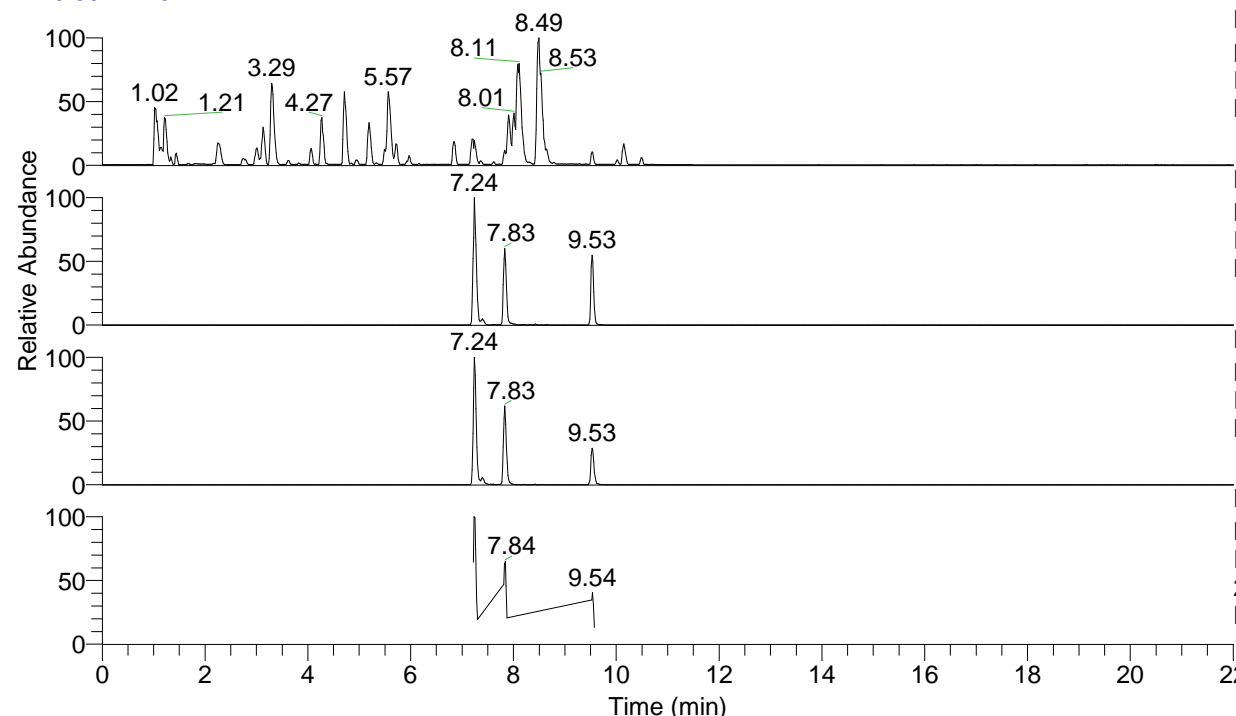


RT: 0.00 - 22.01



NL: 6.76E7
 Base Peak m/z= 100.00000-1500.00000 F:
 FTMS + p ESI Full ms [100.00-1500.00]
 MS Lcornutus

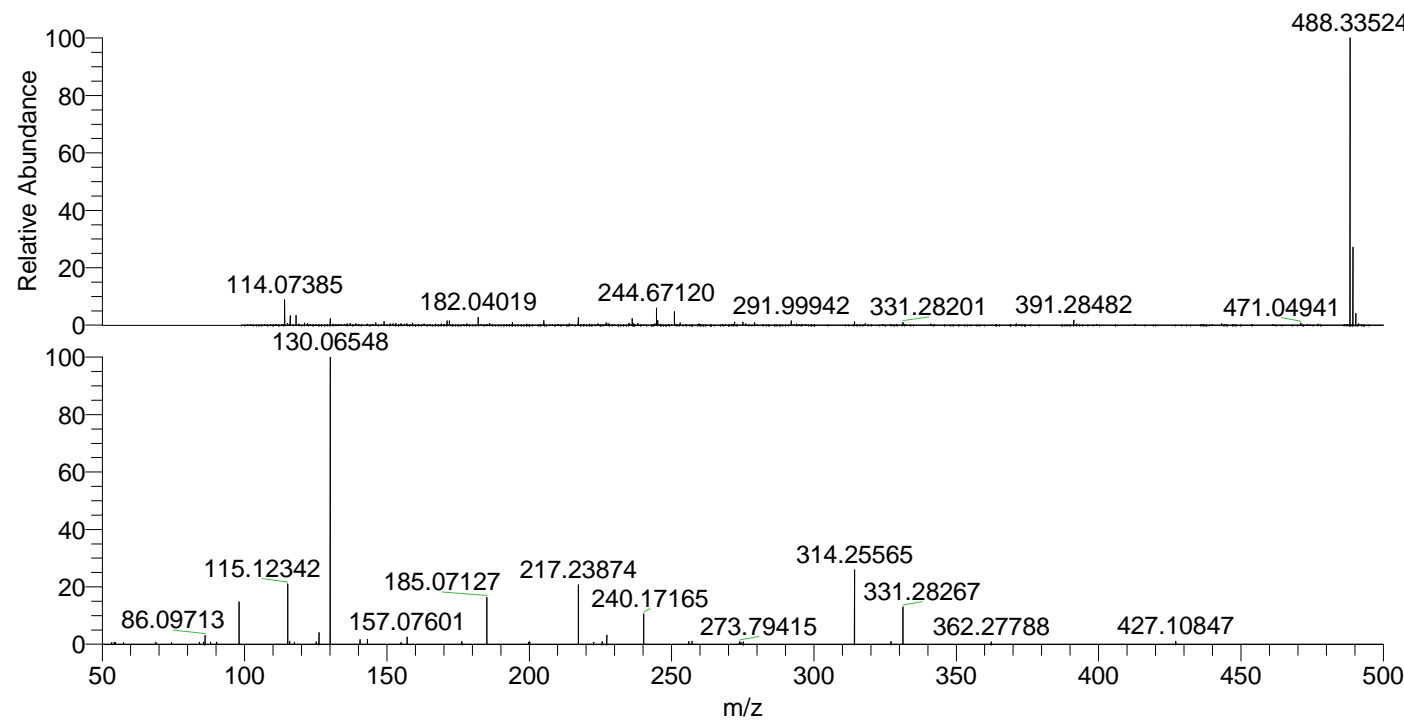
NL: 1.33E7
 Base Peak m/z= 488.33247-488.33735 F:
 FTMS + p ESI Full ms [100.00-1500.00]
 MS Lcornutus

NL: 1.56E6
 Base Peak m/z= 244.67015-244.67259 F:
 FTMS + p ESI Full ms [100.00-1500.00]
 MS Lcornutus

NL: 3.87E5
 Base Peak m/z= 50.00000-1500.00000 F:
 FTMS + p ESI d Full ms2
 244.67@hcd35.00 [50.00-515.00] MS
 Lcornutus

Lcornutus#3802-3815 RT: 9.52-9.55 AV:
 F: FTMS + p ESI d Full ms2 244.67 ...
 m/z= 50.00000-1000.00000

m/z	Intensity	Relative
53.36408	738.8	0.58
54.25339	849.9	0.67
54.61457	733.9	0.58
57.45458	741.7	0.58
68.79760	893.3	0.70
74.32306	796.8	0.63
84.13164	913.6	0.72
85.58269	880.1	0.69
86.09713	3851.3	3.03
88.11098	939.1	0.74
90.19555	951.6	0.75
98.09707	18639.0	14.65
115.12342	26453.7	20.80
115.86477	1335.2	1.05
117.55254	894.5	0.70
125.16907	1030.3	0.81
126.12807	5336.9	4.20
130.06548	127187.5	100.00
140.60579	2108.2	1.66
143.15453	2166.7	1.70
154.97509	840.0	0.66
157.07601	3109.4	2.44
176.37776	1171.2	0.92
185.07127	20634.7	16.22
199.68541	987.2	0.78
200.13216	1050.4	0.83
217.23874	26358.6	20.72
222.60711	983.1	0.77
225.63799	1104.4	0.87
227.22304	3987.6	3.14
240.17165	13567.7	10.67
256.05405	1179.9	0.93
257.19751	1333.6	1.05
273.79415	1086.1	0.85
274.39898	999.3	0.79
275.21015	1066.2	0.84
314.25565	32568.9	25.61
327.06696	1202.2	0.95
331.28267	17030.7	13.39
362.27788	1036.0	0.81
427.10847	1375.3	1.08



488.33524 NL: 7.27E6
 Lcornutus#3805 RT: 9.53
 AV: 1 T: FTMS + p ESI
 Full lock ms
 [100.00-1500.00]

NL: 1.26E5
 Lcornutus#3802-3817 RT:
 9.52-9.55 AV: 3 F: FTMS
 + p ESI d Full ms2
 244.67@hcd35.00
 [50.00-515.00]