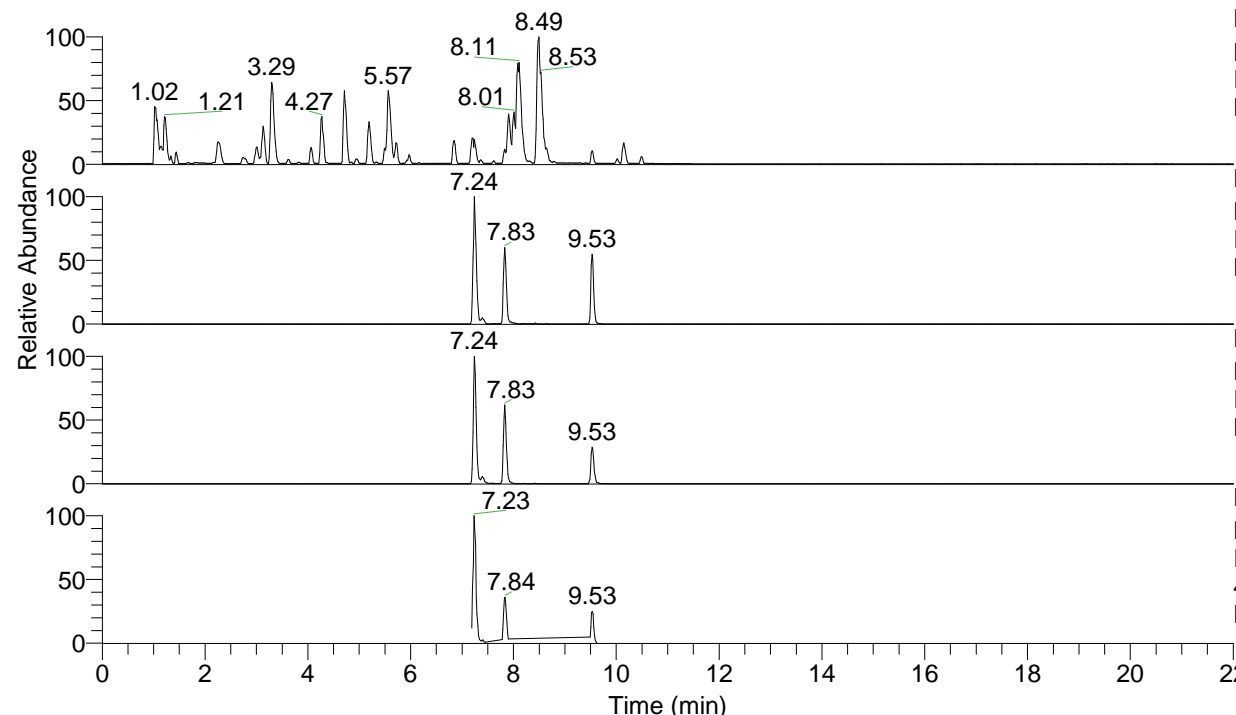


RT: 0.00 - 22.01



NL: 6.76E7
 Base Peak m/z= 100.00000-1500.00000 F:
 FTMS + p ESI Full ms [100.00-1500.00]
 MS Lcornutus

NL: 1.33E7
 Base Peak m/z= 488.33247-488.33735 F:
 FTMS + p ESI Full ms [100.00-1500.00]
 MS Lcornutus

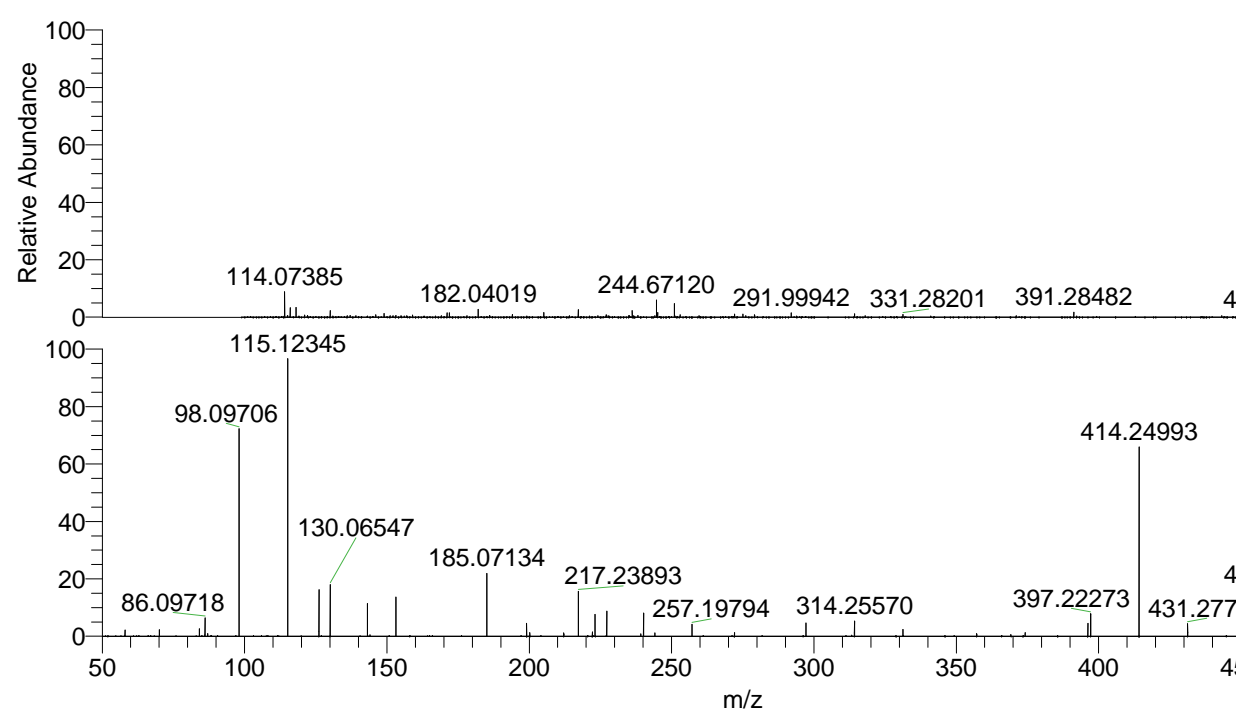
NL: 1.56E6
 Base Peak m/z= 244.67015-244.67259 F:
 FTMS + p ESI Full ms [100.00-1500.00]
 MS Lcornutus

NL: 2.05E6
 Base Peak m/z= 50.00000-1500.00000 F:
 FTMS + p ESI d Full ms2
 488.33@hcd35.00 [50.00-515.00] MS
 Lcornutus

Lcornutus#3795-3818 RT: 9.51-9.56 AV:

F: FTMS + p ESI d Full ms2 488.33 ...
 m/z= 50.00000-1000.00000

m/z	Intensity	Relative
58.06603	8266.7	2.19
70.06588	8298.2	2.20
84.08153	9930.0	2.63
86.09718	23838.4	6.32
87.05594	3658.4	0.97
98.09706	267348.0	70.93
115.12345	354237.7	93.98
126.12794	59942.5	15.90
130.06547	67431.8	17.89
143.15443	42180.3	11.19
144.08058	1978.9	0.53
153.13870	50159.0	13.31
185.07134	80254.8	21.29
199.08719	16696.6	4.43
200.21316	4890.0	1.30
212.13932	4101.4	1.09
217.23893	57775.9	15.33
222.16059	5639.3	1.50
223.14420	28897.4	7.67
227.22325	31908.3	8.47
239.18682	3142.8	0.83
240.17071	29995.5	7.96
244.10866	4461.7	1.18
257.19794	15773.8	4.19
272.10341	4804.5	1.27
297.22878	16876.5	4.48
314.25570	19552.6	5.19
331.28174	8695.9	2.31
357.19170	3403.0	0.90
369.19457	2145.4	0.57
374.22079	4509.7	1.20
396.23891	16616.9	4.41
397.22273	29837.9	7.92
414.24993	243928.6	64.72
431.27749	16534.8	4.39
470.32336	2810.6	0.75
471.30843	60303.7	16.00
488.33498	376910.8	100.00



488.33524 NL: 7.27E6
 Lcornutus#3805 RT: 9.53
 AV: 1 T: FTMS + p ESI
 Full lock ms
 [100.00-1500.00]

488.33498 NL: 3.65E5
 Lcornutus#3792-3821 RT:
 9.51-9.56 AV: 5 F: FTMS
 + p ESI d Full ms2
 488.33@hcd35.00
 [50.00-515.00]