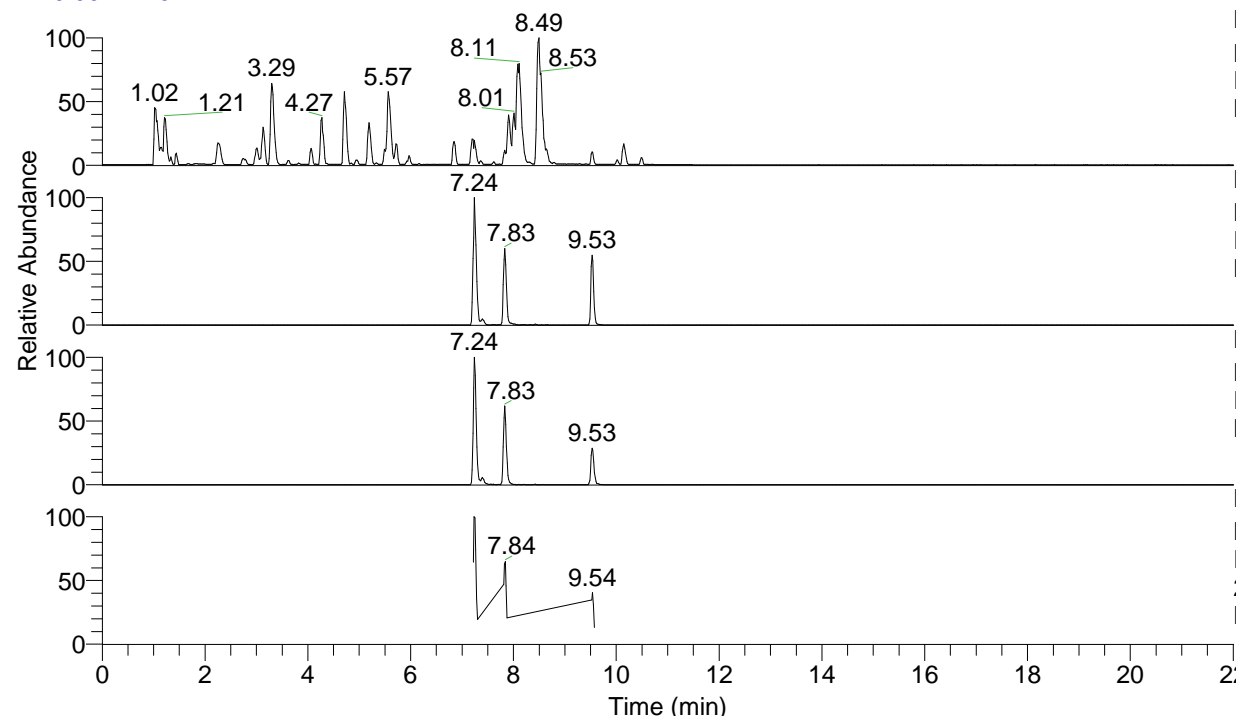


RT: 0.00 - 22.01



NL: 6.76E7
 Base Peak m/z= 100.00000-1500.00000 F:
 FTMS + p ESI Full ms [100.00-1500.00]
 MS Lcornutus

NL: 1.33E7
 Base Peak m/z= 488.33247-488.33735 F:
 FTMS + p ESI Full ms [100.00-1500.00]
 MS Lcornutus

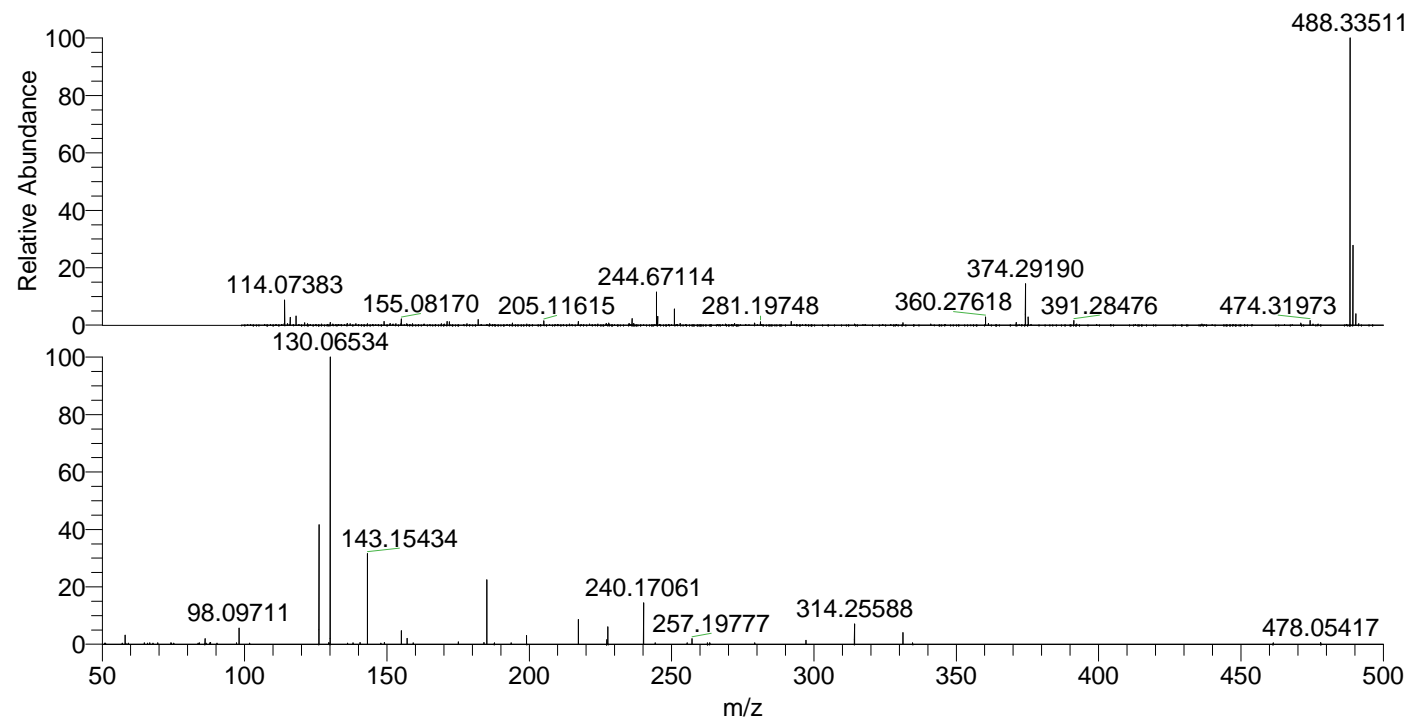
NL: 1.56E6
 Base Peak m/z= 244.67015-244.67259 F:
 FTMS + p ESI Full ms [100.00-1500.00]
 MS Lcornutus

NL: 3.87E5
 Base Peak m/z= 50.00000-1500.00000 F:
 FTMS + p ESI d Full ms2
 244.67@hcd35.00 [50.00-515.00] MS
 Lcornutus

Lcornutus#3119-3131 RT: 7.83-7.86 AV:

F: FTMS + p ESI d Full ms2 244.67 ...
 m/z= 50.00000-1000.00000

m/z	Intensity	Relative
58.06598	6434.1	3.09
86.09700	3891.4	1.87
88.03990	1192.7	0.57
98.09711	11513.8	5.53
126.12788	84162.1	40.40
129.70036	1129.1	0.54
130.06534	208314.9	100.00
138.05519	1069.2	0.51
140.60475	1280.3	0.61
143.15434	63703.8	30.58
149.11779	1193.8	0.57
155.08182	9641.1	4.63
157.07667	4165.9	2.00
159.23534	1048.7	0.50
175.08674	1614.5	0.78
184.07515	1172.1	0.56
185.07099	45154.8	21.68
187.74690	1132.3	0.54
199.08710	6227.0	2.99
217.23941	17617.8	8.46
227.22390	3366.1	1.62
227.64390	12613.8	6.06
240.17061	29149.4	13.99
257.19777	4052.2	1.95
262.61742	1082.3	0.52
263.41254	1105.2	0.53
279.21750	1073.4	0.52
297.22948	2702.5	1.30
314.25588	14321.5	6.87
331.28162	8119.0	3.90
334.68356	1130.9	0.54
461.35810	1096.6	0.53
478.05417	1146.0	0.55



488.33511 NL: 7.97E6
 Lcornutus#3121 RT: 7.83
 AV: 1 T: FTMS + p ESI
 Full lock ms
 [100.00-1500.00]

NL: 2.01E5
 Lcornutus#3115-3133 RT:
 7.83-7.86 AV: 3 F: FTMS
 + p ESI d Full ms2
 244.67@hcd35.00
 [50.00-515.00]