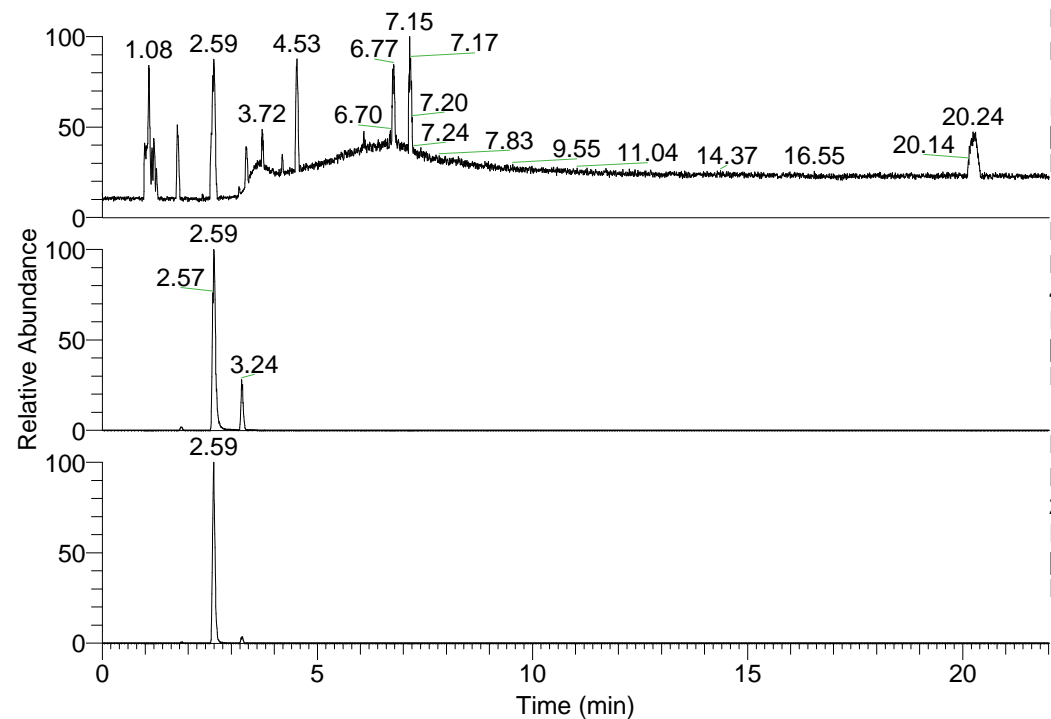


RT: 0.00 - 22.01



NL: 6.93E7
Base Peak m/z=
100.00000-1500.00000 F:
FTMS + p ESI Full ms
[100.00-1500.00] MS
Lcornutus_HDX

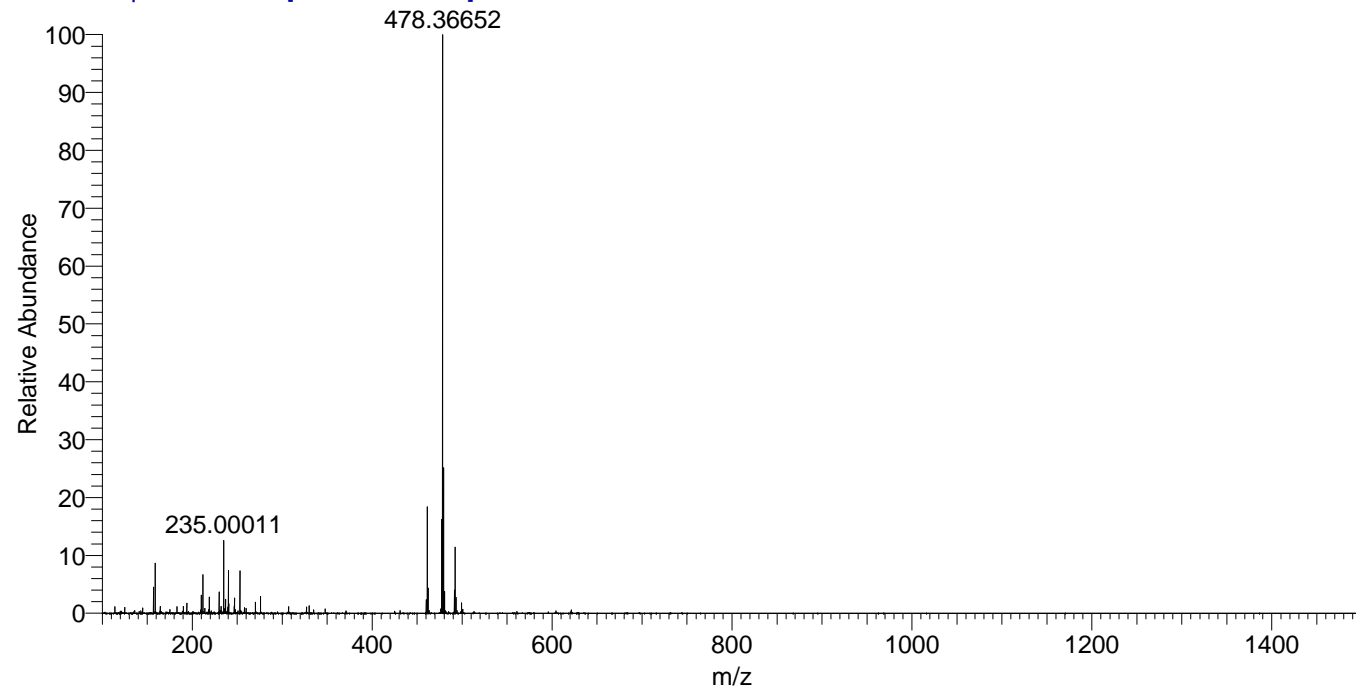
Lcornutus_HDX#398 RT: 2.59
T: FTMS + p ESI Full ms [100.00-1500.00]
m/z = 492.00000-493.00000

m/z	Intensity	Relative	Delta (ppm)	Composition
492.38184	6536536.0	100.00	-1.02	C ₂₃ H ₃₀ ² H ₁₁ O ₅ N ₆
			2.12	C ₂₃ H ₂₈ ² H ₁₂ O ₅ N ₆
			-4.17	C ₂₃ H ₃₂ ² H ₁₀ O ₅ N ₆

NL: 7.15E6
Base Peak m/z=
492.38043-492.38535 F:
FTMS + p ESI Full ms
[100.00-1500.00] MS
Lcornutus_HDX

NL: 1.65E6
Base Peak m/z=
247.19726-247.19974 F:
FTMS + p ESI Full ms
[100.00-1500.00] MS
Lcornutus_HDX

Lcornutus_HDX #398 RT: 2.59 AV: 1 NL: 5.58E7
T: FTMS + p ESI Full ms [100.00-1500.00]



Lcornutus_HDX #398 RT: 2.59 AV: 1 NL: 5.58E7
T: FTMS + p ESI Full ms [100.00-1500.00]

