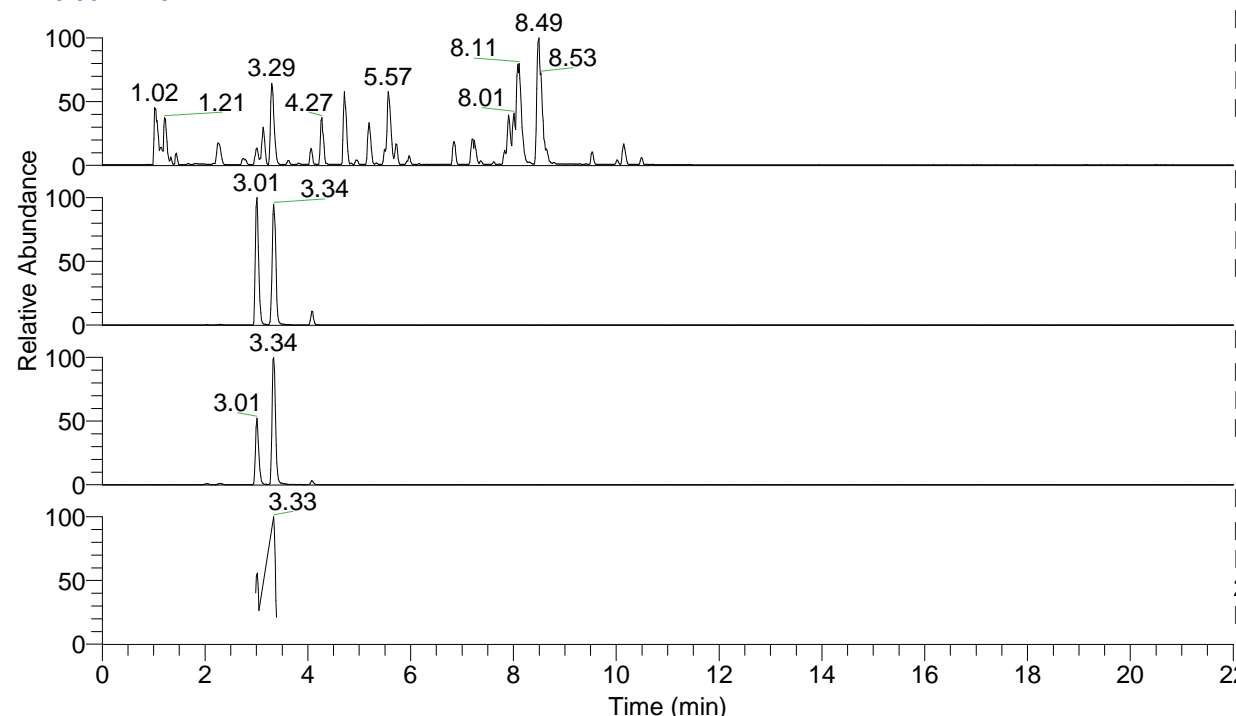


RT: 0.00 - 22.01



NL: 6.76E7  
 Base Peak m/z= 100.00000-1500.00000 F:  
 FTMS + p ESI Full ms [100.00-1500.00]  
 MS Lcornutus

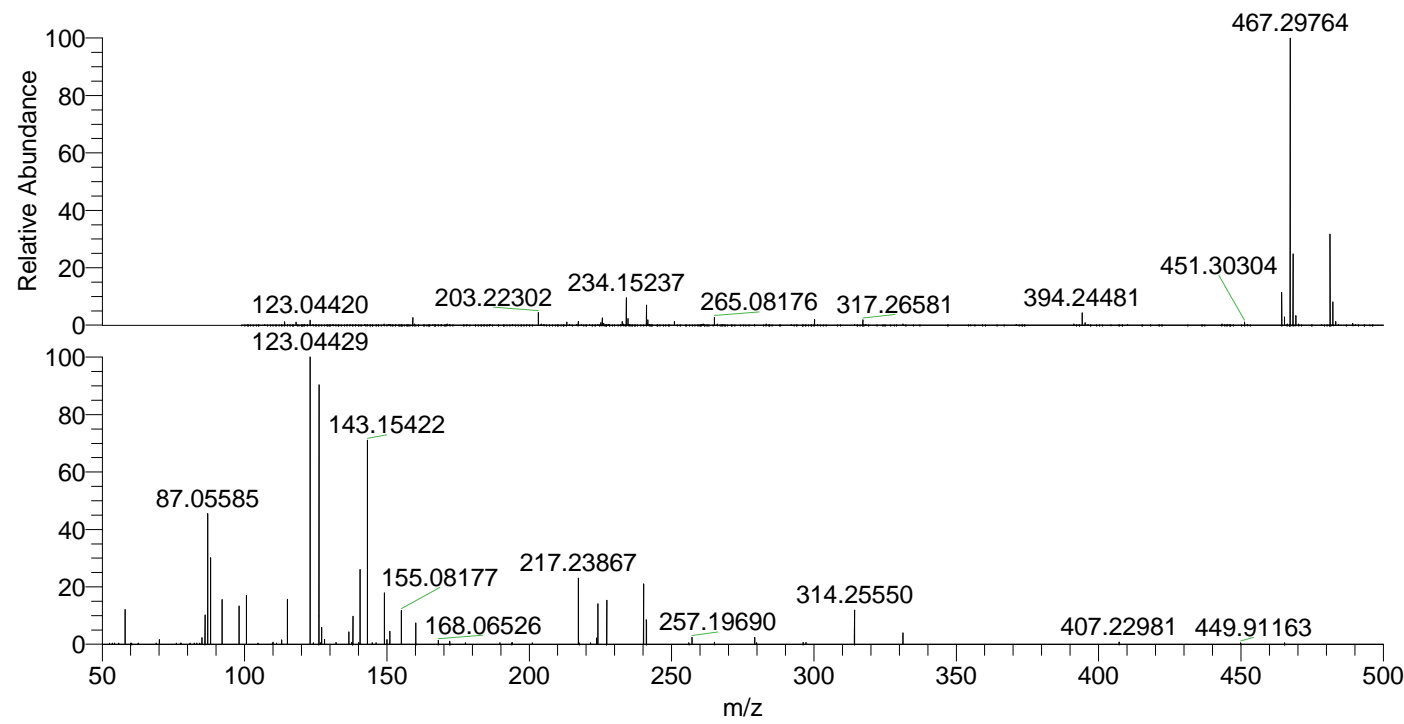
NL: 9.33E6  
 Base Peak m/z= 481.31143-481.31625 F:  
 FTMS + p ESI Full ms [100.00-1500.00]  
 MS Lcornutus

NL: 1.89E6  
 Base Peak m/z= 241.15962-241.16204 F:  
 FTMS + p ESI Full ms [100.00-1500.00]  
 MS Lcornutus

NL: 2.49E5  
 Base Peak m/z= 50.00000-1500.00000 F:  
 FTMS + p ESI d Full ms2  
 241.16@hcd35.00 [50.00-510.00] MS  
 Lcornutus

Lcornutus#1332-1350 RT: 3.33-3.38 AV:  
 F: FTMS + p ESI d Full ms2 241.16 ...  
 m/z= 50.00000-1000.00000

m/z	Intensity	Relative
58.06591	20239.5	12.00
70.02964	2587.5	1.53
85.07680	3734.0	2.21
86.09693	17453.6	10.35
87.05585	76077.6	45.10
88.03990	50969.9	30.22
92.09693	26108.8	15.48
98.02432	2423.7	1.44
98.09690	22320.2	13.23
100.61023	28224.3	16.73
110.02456	1212.0	0.72
113.07139	2516.9	1.49
115.04330	1008.8	0.60
115.05048	26251.6	15.56
123.04429	168686.9	100.00
124.11307	922.0	0.55
126.12782	150706.9	89.34
127.08696	9576.4	5.68
128.11344	2904.7	1.72
132.13907	996.0	0.59
136.62629	7207.9	4.27
137.68096	942.0	0.56
138.05488	16621.6	9.85
140.11467	953.7	0.57
140.60459	43401.8	25.73
143.15422	117835.9	69.85
149.11800	29925.0	17.74
150.05501	2739.6	1.62
151.03915	7452.2	4.42
155.08177	19482.9	11.55
160.18127	12601.0	7.47
168.06526	2196.4	1.30
172.10816	1802.1	1.07
217.23867	38256.4	22.68
217.52547	892.0	0.53
221.51083	894.0	0.53
223.64263	3519.0	2.09
224.13357	24090.9	14.28
227.22301	25254.8	14.97
240.17031	35016.7	20.76
241.15477	14100.0	8.36
257.19690	3990.1	2.37
265.08247	1219.9	0.72
279.21870	3944.9	2.34
296.24456	1002.8	0.59
297.22900	968.0	0.57
314.25550	19723.7	11.69
331.28274	6778.7	4.02
407.22981	1228.9	0.73
449.91163	915.5	0.54
465.34351	895.0	0.53



NL: 2.72E7  
 Lcornutus#1333 RT: 3.34  
 AV: 1 T: FTMS + p ESI  
 Full ms [100.00-1500.00]

NL: 1.65E5  
 Lcornutus#1325-1351 RT:  
 3.33-3.38 AV: 4 F: FTMS  
 + p ESI d Full ms2  
 241.16@hcd35.00  
 [50.00-510.00]