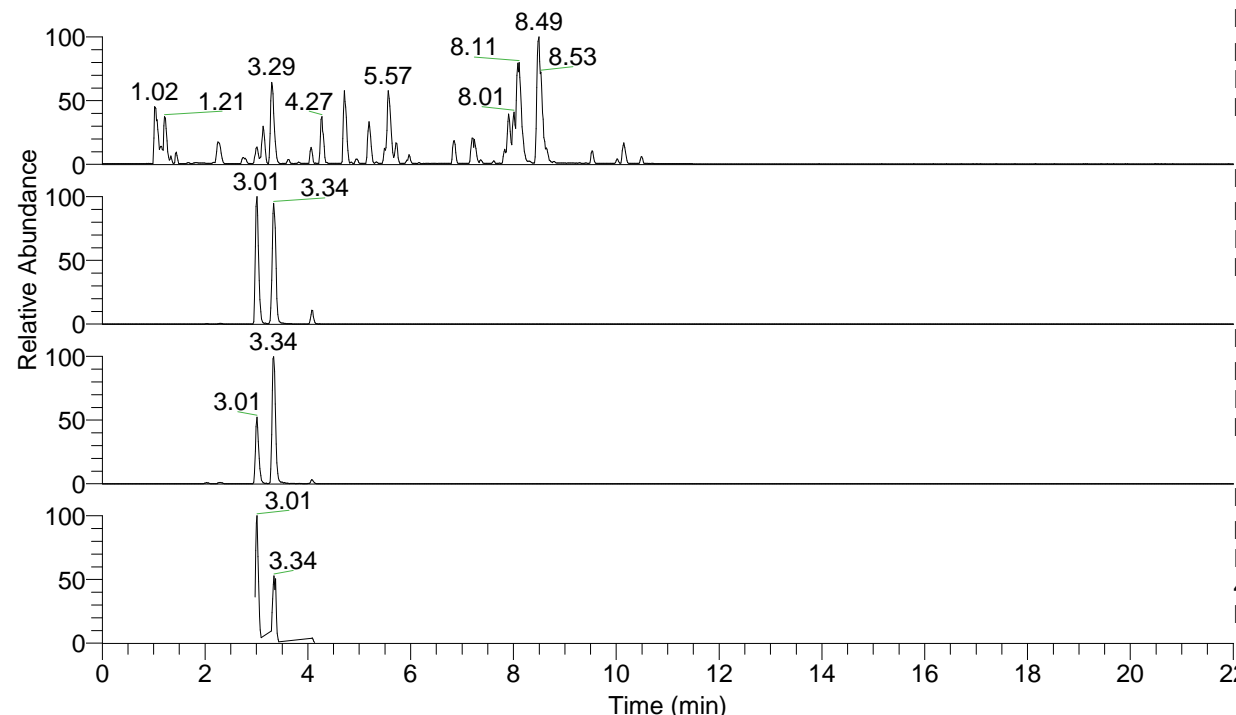


RT: 0.00 - 22.01



NL: 6.76E7  
 Base Peak m/z= 100.00000-1500.00000 F:  
 FTMS + p ESI Full ms [100.00-1500.00]  
 MS Lcornutus

NL: 9.33E6  
 Base Peak m/z= 481.31143-481.31625 F:  
 FTMS + p ESI Full ms [100.00-1500.00]  
 MS Lcornutus

NL: 1.89E6  
 Base Peak m/z= 241.15962-241.16204 F:  
 FTMS + p ESI Full ms [100.00-1500.00]  
 MS Lcornutus

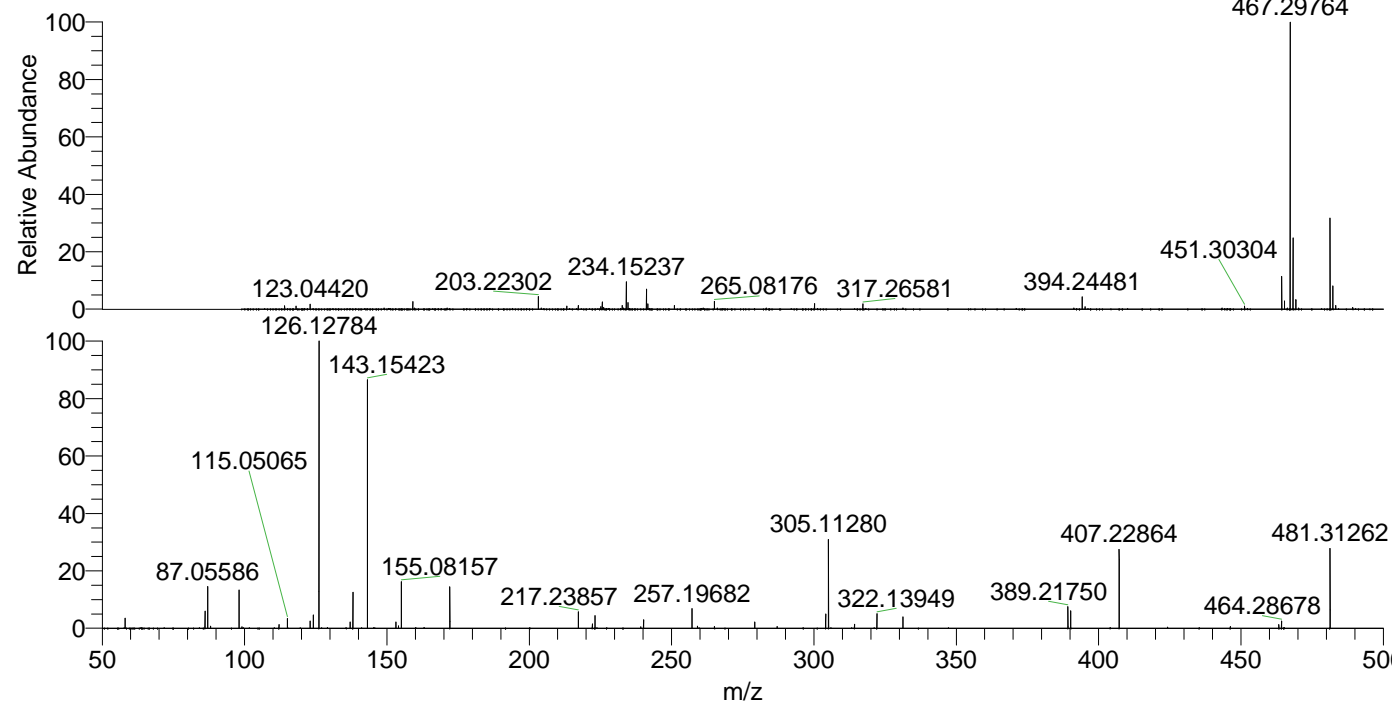
NL: 1.81E6  
 Base Peak m/z= 50.00000-1500.00000 F:  
 FTMS + p ESI d Full ms2  
 481.31@hcd35.00 [50.00-510.00] MS  
 Lcornutus

Lcornutus#1313-1347 RT: 3.29-3.37 AV:

F: FTMS + p ESI d Full ms2 481.31 ...

m/z= 50.00000-1000.00000

m/z	Intensity	Relative
58.06590	21302.5	3.39
86.09705	37844.3	6.03
87.05586	91517.7	14.57
88.03990	4486.6	0.71
98.09693	84309.3	13.43
99.05590	3253.9	0.52
112.11234	7739.3	1.23
115.05065	20453.4	3.26
123.04440	15856.7	2.53
124.11233	28827.1	4.59
126.12784	627984.8	100.00
137.07110	13388.6	2.13
138.05493	79281.7	12.62
143.15423	541564.3	86.24
153.13873	13022.2	2.07
154.09769	4862.9	0.77
155.08154	103335.5	16.46
172.10815	89539.2	14.26
217.23858	35347.0	5.63
222.16097	9431.7	1.50
223.14421	27580.9	4.39
240.17065	18011.7	2.87
257.19682	41629.7	6.63
259.10735	4044.2	0.64
265.08242	4402.9	0.70
279.21810	13611.6	2.17
287.10190	3532.2	0.56
304.12855	30550.4	4.86
305.11281	194354.3	30.95
314.25573	8613.0	1.37
322.13949	30594.3	4.87
331.28142	24675.3	3.93
389.21752	47196.6	7.52
390.20163	37238.1	5.93
407.22869	171722.3	27.34
446.27561	3488.0	0.56
463.30213	7618.7	1.21
464.28677	14692.6	2.34
481.31264	173667.7	27.65



NL: 2.72E7  
 Lcornutus#1333 RT: 3.34  
 AV: 1 T: FTMS + p ESI  
 Full ms [100.00-1500.00]

NL: 6.98E5  
 Lcornutus#1317-1352 RT:  
 3.30-3.37 AV: 6 F: FTMS  
 + p ESI d Full ms2  
 481.31@hcd35.00  
 [50.00-510.00]