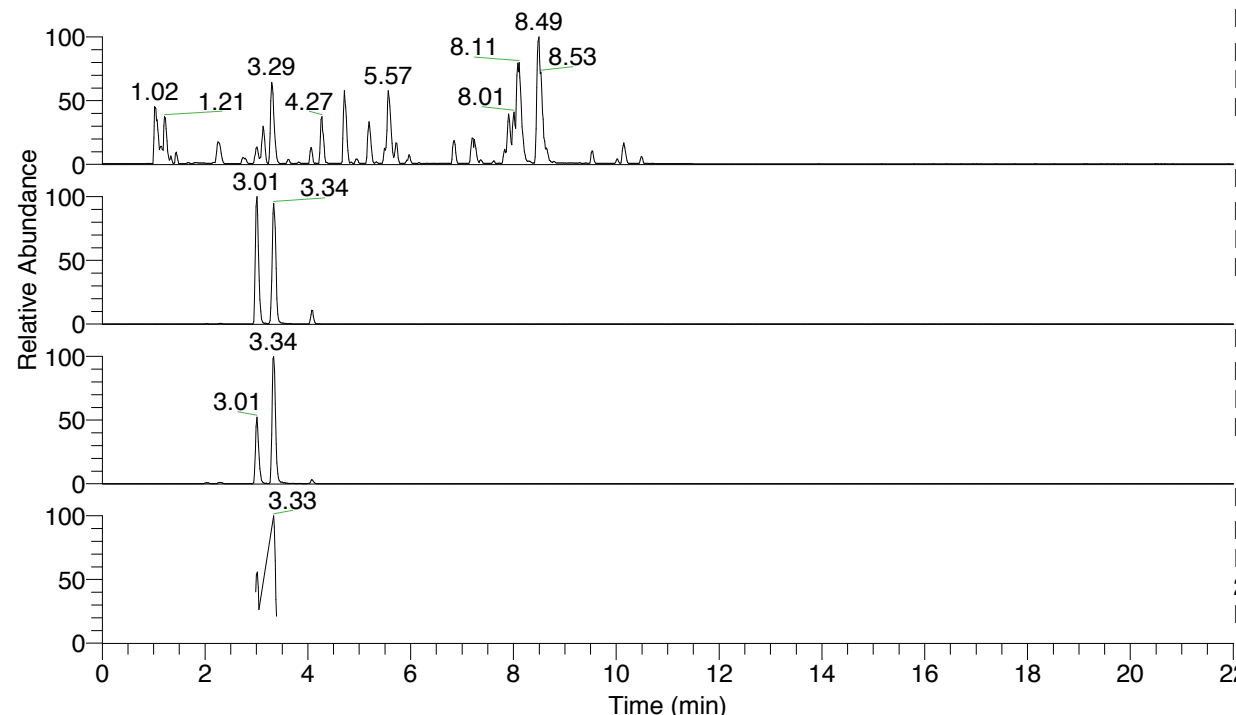


RT: 0.00 - 22.01



NL: 6.76E7
 Base Peak m/z= 100.00000-1500.00000 F:
 FTMS + p ESI Full ms [100.00-1500.00]
 MS Lcornutus

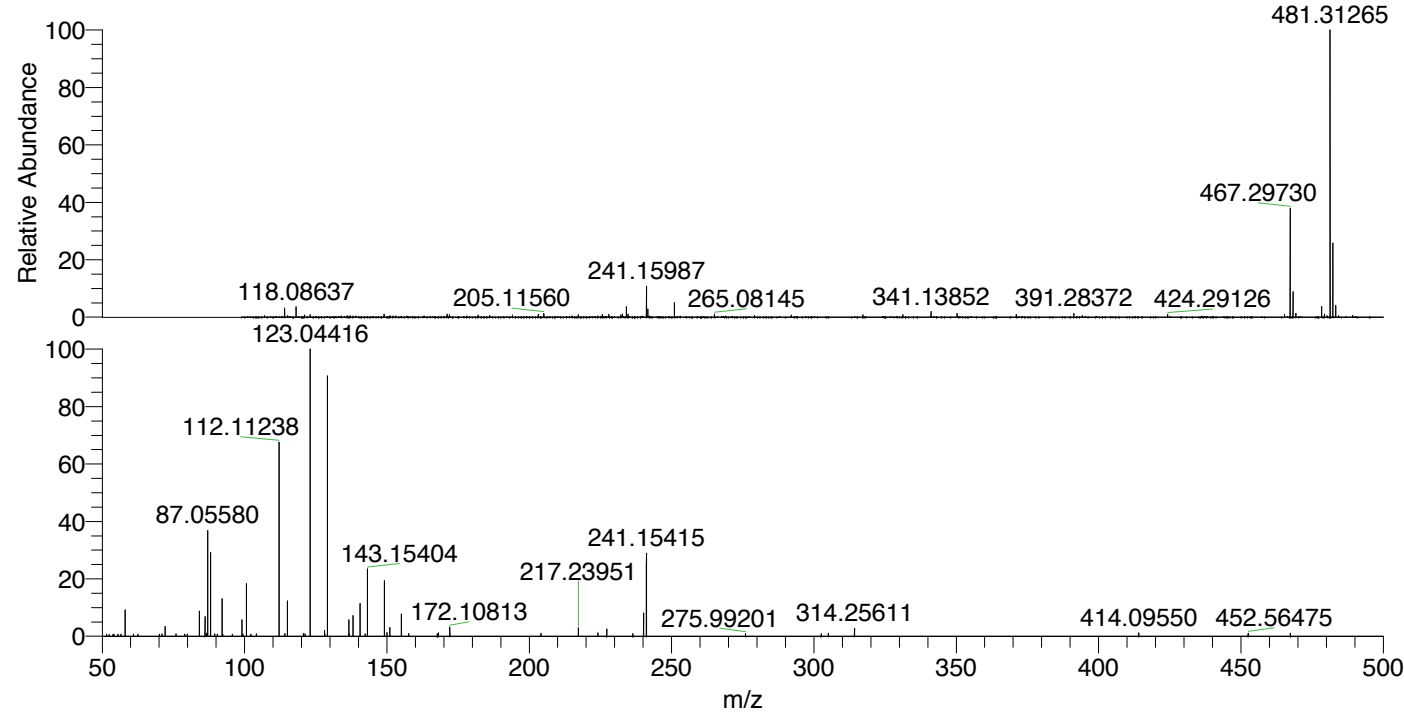
NL: 9.33E6
 Base Peak m/z= 481.31143-481.31625 F:
 FTMS + p ESI Full ms [100.00-1500.00]
 MS Lcornutus

NL: 1.89E6
 Base Peak m/z= 241.15962-241.16204 F:
 FTMS + p ESI Full ms [100.00-1500.00]
 MS Lcornutus

NL: 2.49E5
 Base Peak m/z= 50.00000-1500.00000 F:
 FTMS + p ESI d Full ms2
 241.16@hcd35.00 [50.00-510.00] MS
 Lcornutus

Lcornutus#1192-1204 RT: 2.99-3.02 AV:
 F: FTMS + p ESI d Full ms2 241.16 ...
 m/z= 50.00000-1000.00000

m/z	Intensity	Relative
58.06589	10427.9	8.95
70.94738	940.7	0.81
72.08146	3995.6	3.43
75.86922	926.6	0.80
84.08130	9927.9	8.52
86.09705	8050.5	6.91
86.59483	1248.3	1.07
87.05580	41723.2	35.82
88.03984	34054.2	29.24
89.48459	912.1	0.78
92.09698	15036.2	12.91
92.35941	958.1	0.82
99.09227	6667.8	5.73
100.61015	20668.6	17.75
102.20211	898.3	0.77
104.15751	893.3	0.77
112.11238	76862.5	66.00
114.11490	1135.3	0.97
115.05074	13924.9	11.96
120.71968	1099.6	0.94
121.24337	983.8	0.84
123.04416	116466.1	100.00
123.05250	4531.5	3.89
128.11293	2288.8	1.97
128.21230	929.3	0.80
129.13015	1185.9	1.02
129.13864	105563.2	90.64
136.62629	6588.4	5.66
136.70594	933.7	0.80
138.05501	8391.5	7.21
140.60461	13154.3	11.29
142.33867	967.4	0.83
143.15404	26507.2	22.76
149.11783	22657.0	19.45
150.05487	1533.9	1.32
151.03900	3509.3	3.01
155.08158	8902.9	7.64
157.64501	1018.3	0.87
167.72470	936.0	0.80
168.06587	1276.2	1.10
172.10813	3657.0	3.14
204.06986	1176.0	1.01
217.23951	3444.9	2.96
224.13293	1268.0	1.09
227.22342	2869.6	2.46
236.41936	1049.3	0.90
240.17045	9102.5	7.82
241.15415	32739.3	28.11
275.99201	1025.8	0.88
302.57064	994.9	0.85
305.11227	1158.2	0.99
314.25611	3096.0	2.66
414.09550	1272.2	1.09
452.56475	1219.1	1.05
467.35680	1175.3	1.01



NL: 9.07E6
 Lcornutus#1201 RT: 3.01
 AV: 1 T: FTMS + p ESI
 Full lock ms
 [100.00-1500.00]

NL: 1.13E5
 Lcornutus#1191-1208 RT:
 2.99-3.02 AV: 3 F: FTMS
 + p ESI d Full ms2
 241.16@hcd35.00
 [50.00-510.00]

Lcornutus#1192-1204 RT: 2.99-3.02 AV: 3

F: FTMS + p ESI d Full ms2 241.16@hcd35.00 [50.00-510.00]

m/z= 50.00000-1000.00000

m/z	Intensity	Relative
51.49743	807.5	0.69
52.36576	754.0	0.65
53.75795	753.9	0.65
54.05305	759.7	0.65
55.55775	855.8	0.73
56.58659	803.9	0.69
58.06589	10427.9	8.95
60.97729	864.1	0.74
62.55801	790.3	0.68
70.02946	827.1	0.71
70.94738	940.7	0.81
72.08146	3995.6	3.43
75.86922	926.6	0.80
78.97304	810.5	0.70
79.81190	793.2	0.68
84.08130	9927.9	8.52
86.09705	8050.5	6.91
86.59483	1248.3	1.07
87.05580	41723.2	35.82
88.03984	34054.2	29.24
89.48459	912.1	0.78
90.43738	868.4	0.75
92.09698	15036.2	12.91
92.35941	958.1	0.82
95.73639	824.1	0.71
99.09227	6667.8	5.73
99.44139	849.3	0.73
100.61015	20668.6	17.75
102.20211	898.3	0.77
104.15751	893.3	0.77
112.11238	76862.5	66.00
114.11490	1135.3	0.97
115.05074	13924.9	11.96
120.71968	1099.6	0.94
121.24337	983.8	0.84
123.04416	116466.1	100.00
123.05250	4531.5	3.89
128.11293	2288.8	1.97
128.21230	929.3	0.80

Lcornutus#1192-1204 RT: 2.99-3.02 AV: 3

F: FTMS + p ESI d Full ms2 241.16@hcd35.00 [50.00-510.00]

m/z= 50.00000-1000.00000

m/z	Intensity	Relative
129.13015	1185.9	1.02
129.13864	105563.2	90.64
136.62629	6588.4	5.66
136.70594	933.7	0.80
138.05501	8391.5	7.21
140.60461	13154.3	11.29
142.33867	967.4	0.83
143.15404	26507.2	22.76
149.11783	22657.0	19.45
150.05487	1533.9	1.32
151.03900	3509.3	3.01
155.08158	8902.9	7.64
157.64501	1018.3	0.87
167.72470	936.0	0.80
168.06587	1276.2	1.10
172.10813	3657.0	3.14
204.06986	1176.0	1.01
217.23951	3444.9	2.96
224.13293	1268.0	1.09
227.22342	2869.6	2.46
236.41936	1049.3	0.90
240.17045	9102.5	7.82
241.15415	32739.3	28.11
275.99201	1025.8	0.88
302.57064	994.9	0.85
305.11227	1158.2	0.99
314.25611	3096.0	2.66
414.09550	1272.2	1.09
452.56475	1219.1	1.05
467.35680	1175.3	1.01