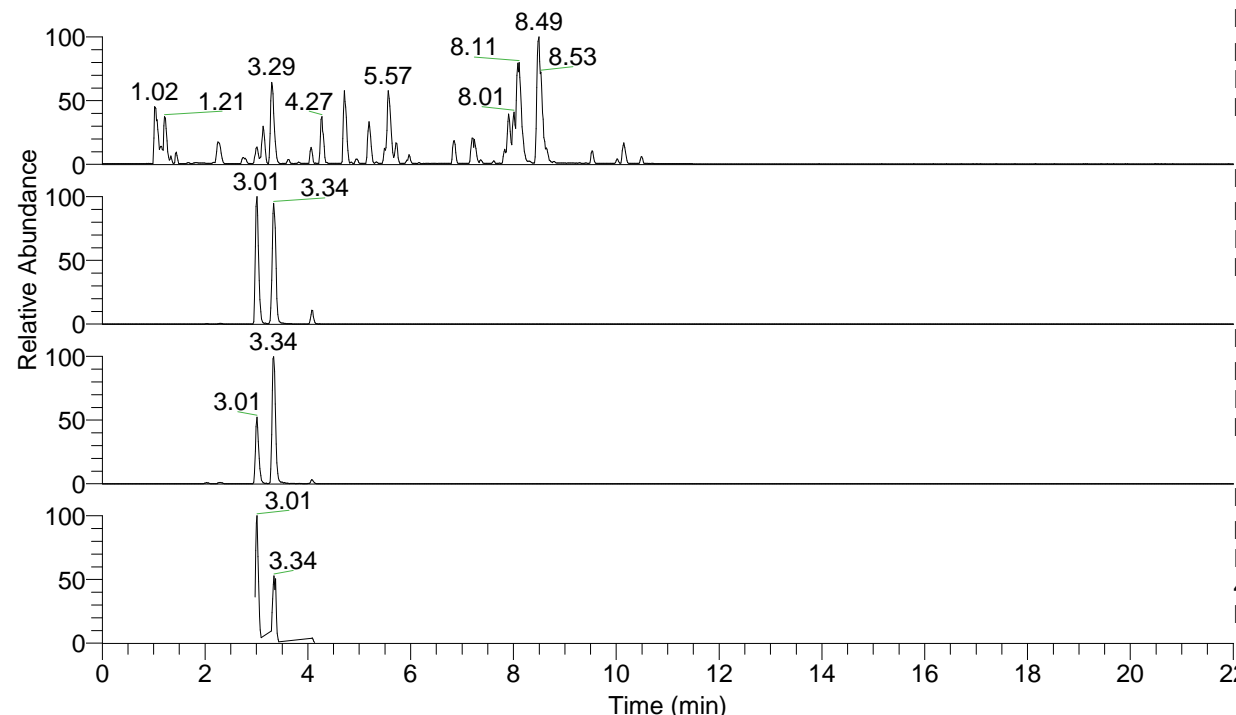


RT: 0.00 - 22.01



NL: 6.76E7
 Base Peak m/z= 100.00000-1500.00000 F:
 FTMS + p ESI Full ms [100.00-1500.00]
 MS Lcornutus

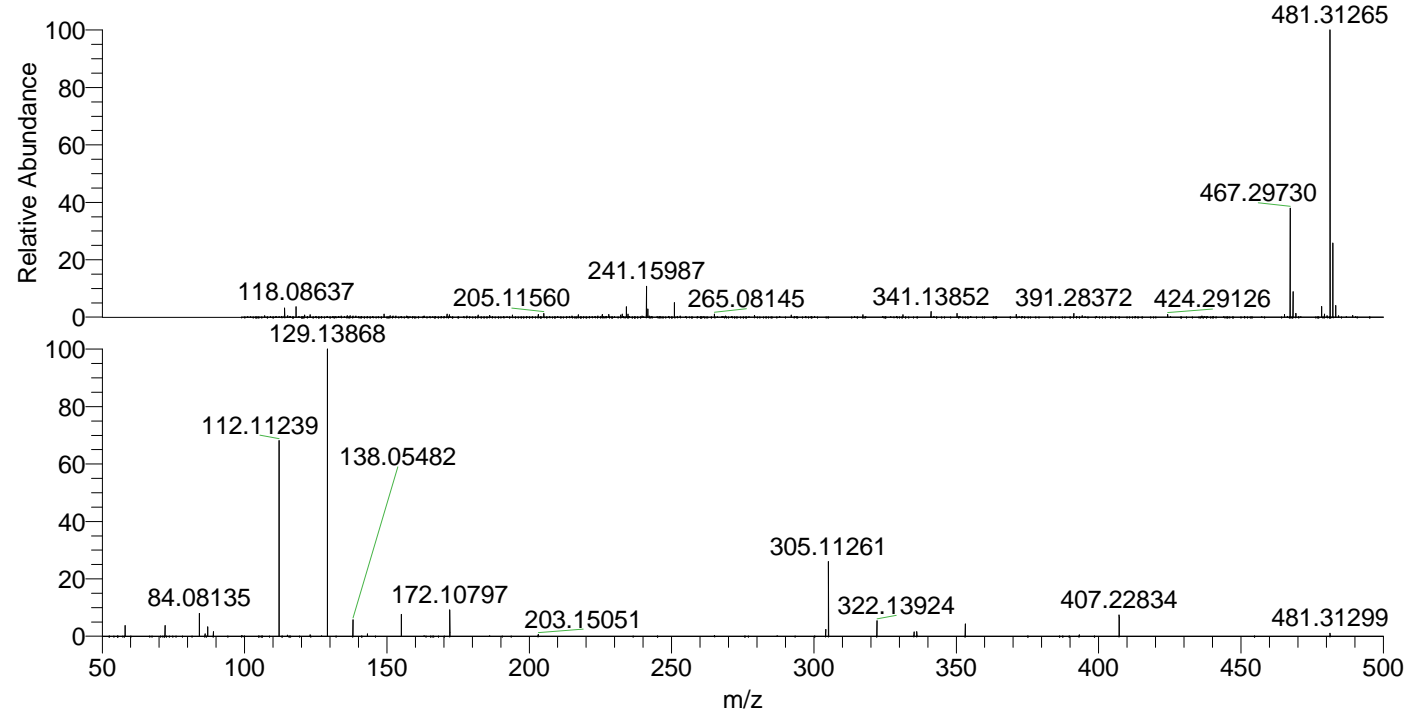
NL: 9.33E6
 Base Peak m/z= 481.31143-481.31625 F:
 FTMS + p ESI Full ms [100.00-1500.00]
 MS Lcornutus

NL: 1.89E6
 Base Peak m/z= 241.15962-241.16204 F:
 FTMS + p ESI Full ms [100.00-1500.00]
 MS Lcornutus

NL: 1.81E6
 Base Peak m/z= 50.00000-1500.00000 F:
 FTMS + p ESI d Full ms2
 481.31@hcd35.00 [50.00-510.00] MS
 Lcornutus

Lcornutus#1186-1214 RT: 2.97-3.04 AV: 6
 F: FTMS + p ESI d Full ms2 481.31@h ...
 m/z= 50.00000-1000.00000

m/z	Intensity	Relative
58.06588	42714.5	3.65
72.08147	43206.4	3.69
84.08135	91433.0	7.82
86.09695	9873.6	0.84
87.05584	37947.0	3.24
89.10780	18616.6	1.59
112.11239	775253.6	66.27
123.04466	5934.5	0.51
129.13868	1169781.4	100.00
138.05482	66568.4	5.69
143.15429	9430.1	0.81
155.08147	87534.1	7.48
172.10797	105417.4	9.01
203.15051	7342.0	0.63
304.12872	27796.7	2.38
305.11261	296466.3	25.34
322.13924	62120.3	5.31
335.17026	17148.4	1.47
336.15504	17725.2	1.52
353.18126	49161.6	4.20
407.22834	84802.3	7.25
481.31299	12352.8	1.06



NL: 9.07E6
 Lcornutus#1201 RT: 3.01
 AV: 1 T: FTMS + p ESI
 Full lock ms
 [100.00-1500.00]

NL: 1.13E6
 Lcornutus#1183-1218 RT:
 2.97-3.04 AV: 6 F: FTMS
 + p ESI d Full ms2
 481.31@hcd35.00
 [50.00-510.00]