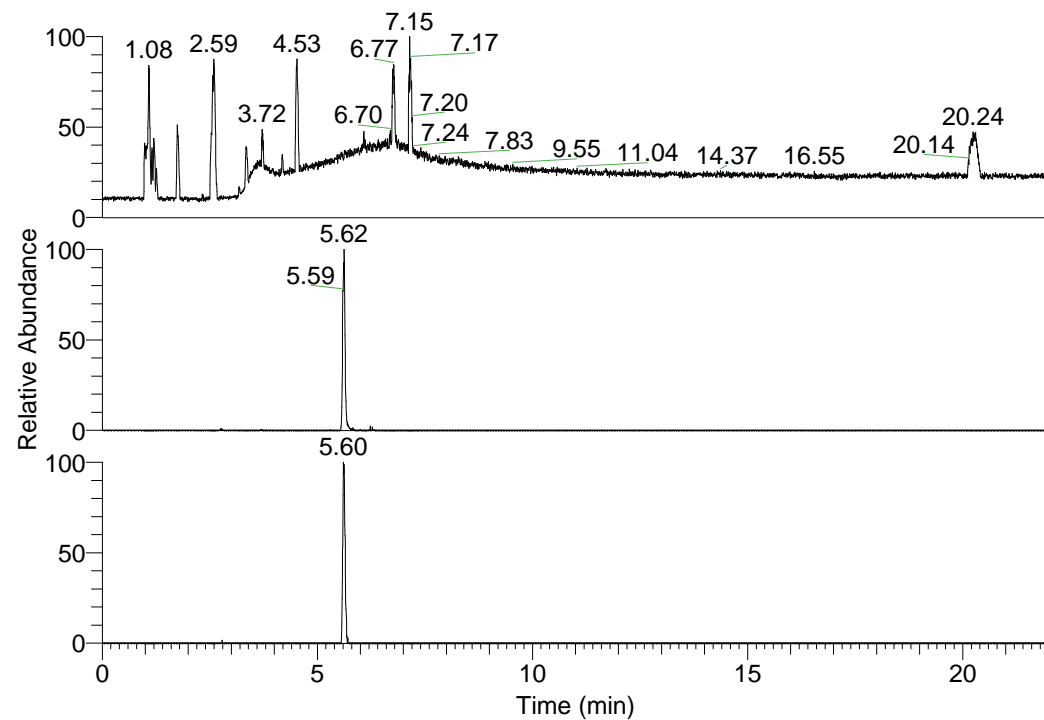


RT: 0.00 - 22.01



NL: 6.93E7
 Base Peak m/z=
 100.00000-1500.00000 F:
 FTMS + p ESI Full ms
 [100.00-1500.00] MS
 Lcornutus_HDX

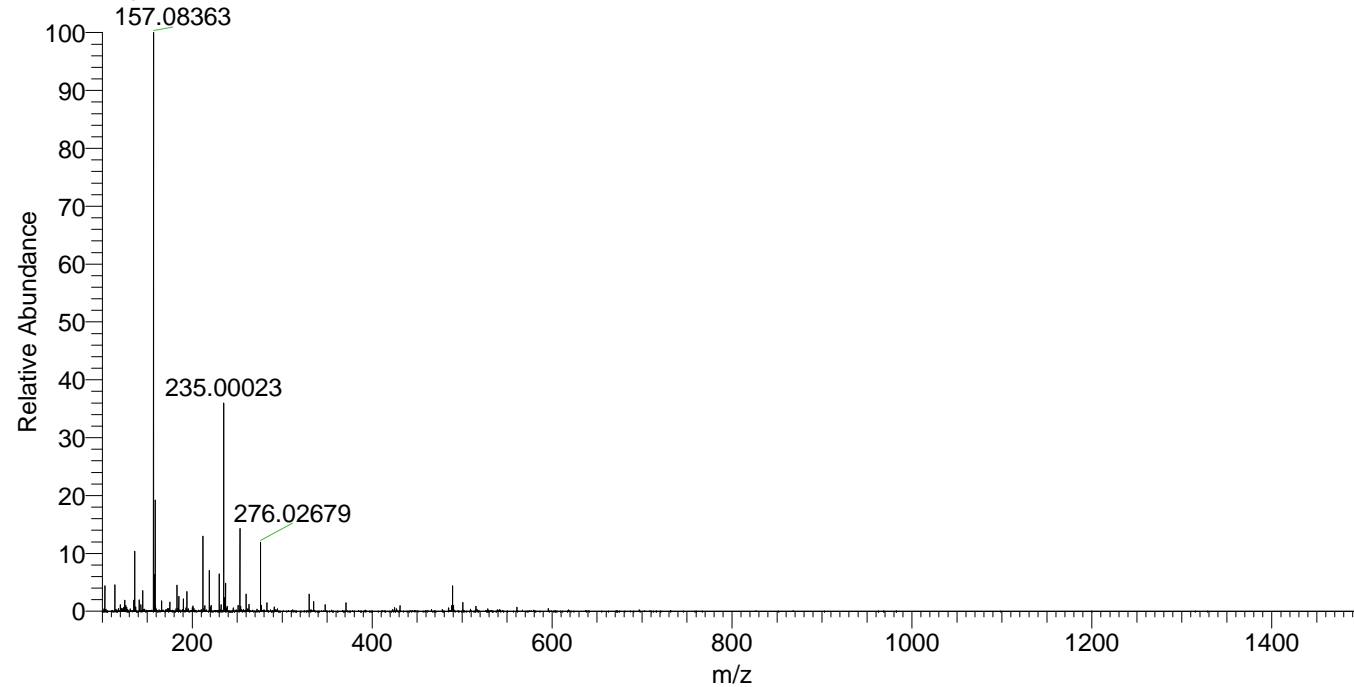
NL: 1.18E6
 Base Peak m/z=
 489.39490-489.39980 F:
 FTMS + p ESI Full ms
 [100.00-1500.00] MS
 Lcornutus_HDX

NL: 1.54E5
 Base Peak m/z=
 245.70450-245.70696 F:
 FTMS + p ESI Full ms
 [100.00-1500.00] MS
 Lcornutus_HDX

Lcornutus_HDX#885 RT: 5.62
 T: FTMS + p ESI Full ms [100.00-1500.00]
 m/z= 489.00000-490.00000

m/z	Intensity	Relative	Delta (ppm)	Composition
489.39700	1044535.1	100.00	0.42	C ₂₄ H ₃₃ ² H ₁₀ O ₄ N ₆
			-2.74	C ₂₄ H ₃₅ ² H ₉ O ₄ N ₆
			3.58	C ₂₄ H ₃₁ ² H ₁₁ O ₄ N ₆

Lcornutus_HDX #885 RT: 5.62 AV: 1 NL: 2.27E7
 T: FTMS + p ESI Full ms [100.00-1500.00]



Lcornutus_HDX #885 RT: 5.62 AV: 1 NL: 1.00E6
 T: FTMS + p ESI Full ms [100.00-1500.00]

