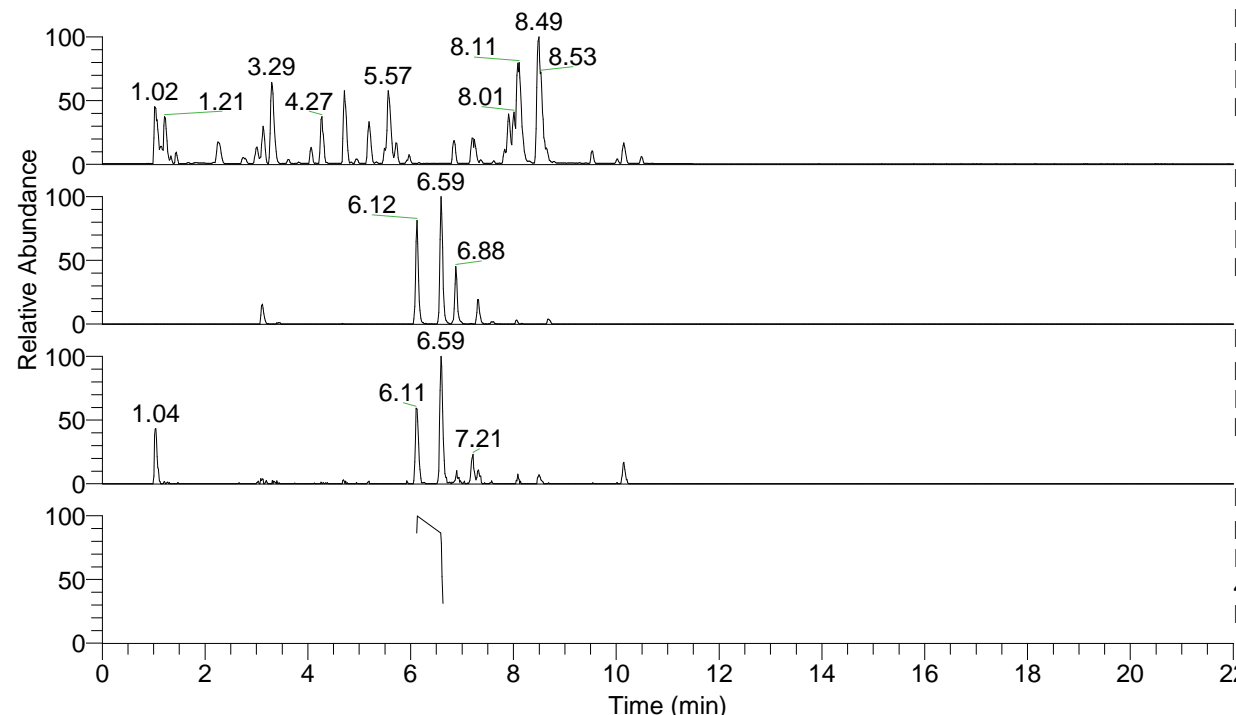


RT: 0.00 - 22.01



NL: 6.76E7
 Base Peak m/z= 100.00000-1500.00000 F:
 FTMS + p ESI Full ms [100.00-1500.00]
 MS Lcornutus

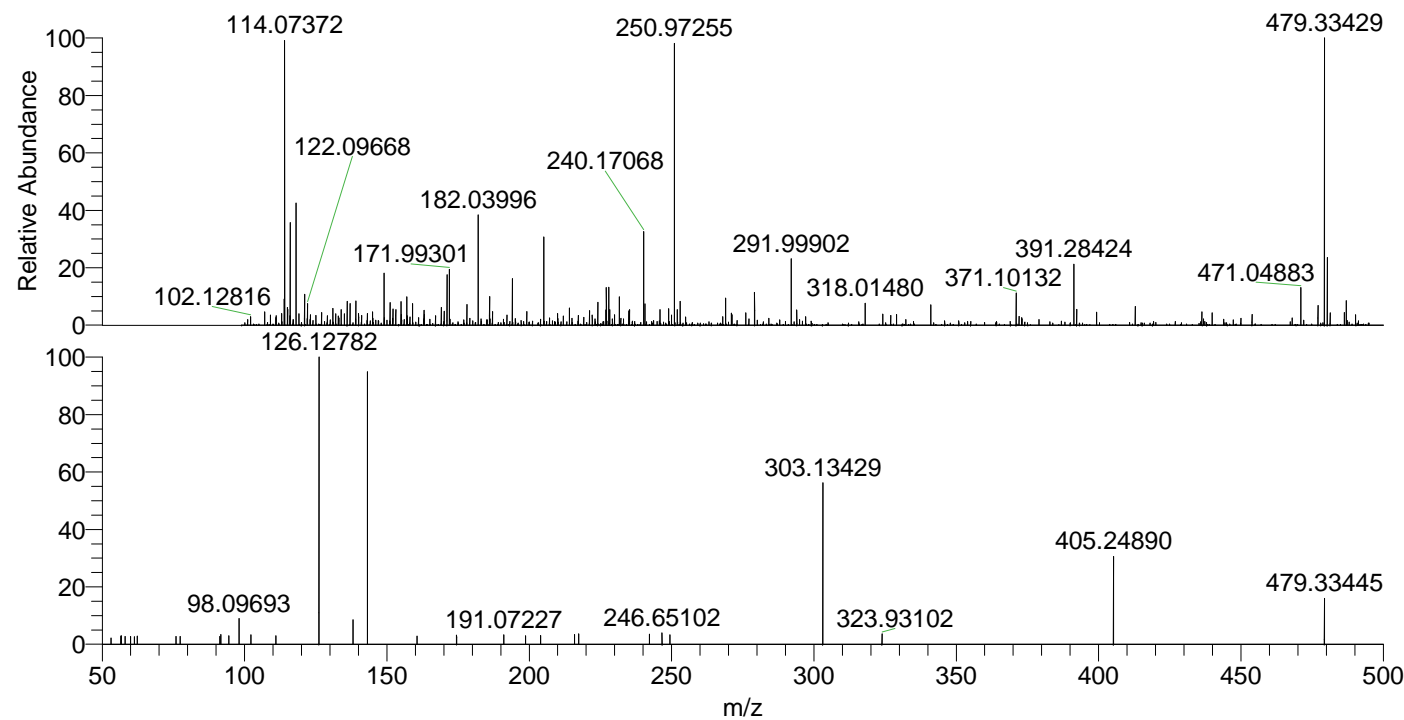
NL: 4.98E5
 Base Peak m/z= 479.33218-479.33698 F:
 FTMS + p ESI Full ms [100.00-1500.00]
 MS Lcornutus

NL: 1.63E5
 Base Peak m/z= 240.17000-240.17240 F:
 FTMS + p ESI Full ms [100.00-1500.00]
 MS Lcornutus

NL: 6.46E4
 Base Peak m/z= 50.00000-1500.00000 F:
 FTMS + p ESI d Full ms2
 479.33@hcd35.00 [50.00-505.00] MS
 Lcornutus

Lcornutus#2627-2637 RT: 6.59-6.61 AV:
 F: FTMS + p ESI d Full ms2 479.33 ...
 m/z= 50.00000-1000.00000

m/z	Intensity	Relative
53.04936	957.6	2.21
56.58354	1229.6	2.83
56.64627	1294.5	2.98
58.06588	1203.3	2.77
59.91541	1175.4	2.71
61.28897	1123.8	2.59
62.32896	1255.8	2.90
75.93334	1185.5	2.73
77.35526	1193.7	2.75
91.36699	1223.9	2.82
91.66007	1490.6	3.44
94.44538	1257.5	2.90
98.09693	3890.0	8.97
102.18874	1412.9	3.26
110.96249	1295.0	2.99
126.12782	43378.9	100.00
138.05542	3681.9	8.49
143.15425	40983.7	94.48
160.55497	1266.1	2.92
174.47321	1393.4	3.21
191.07227	1417.7	3.27
198.67667	1299.5	3.00
204.01525	1350.3	3.11
215.89325	1463.7	3.37
217.35500	1621.4	3.74
242.24661	1531.9	3.53
246.65102	1704.0	3.93
249.40066	1452.2	3.35
303.13429	24259.8	55.93
323.93102	1600.8	3.69
405.24890	13302.2	30.67
479.33445	6858.0	15.81



NL: 4.98E5
 Lcornutus#2629 RT: 6.59
 AV: 1 T: FTMS + p ESI
 Full lock ms
 [100.00-1500.00]

NL: 4.29E4
 Lcornutus#2623-2640 RT:
 6.59-6.61 AV: 3 F: FTMS
 + p ESI d Full ms2
 479.33@hcd35.00
 [50.00-505.00]