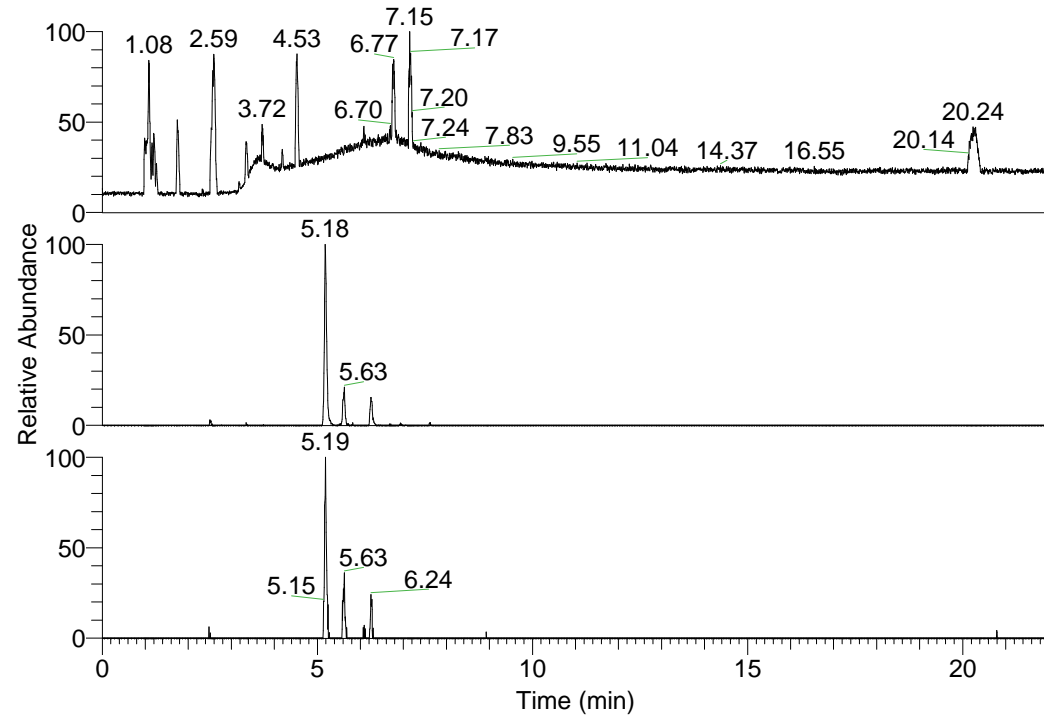


RT: 0.00 - 22.01



NL: 6.93E7
 Base Peak m/z=
 100.00000-1500.00000 F:
 FTMS + p ESI Full ms
 [100.00-1500.00] MS
 Lcornutus_HDX

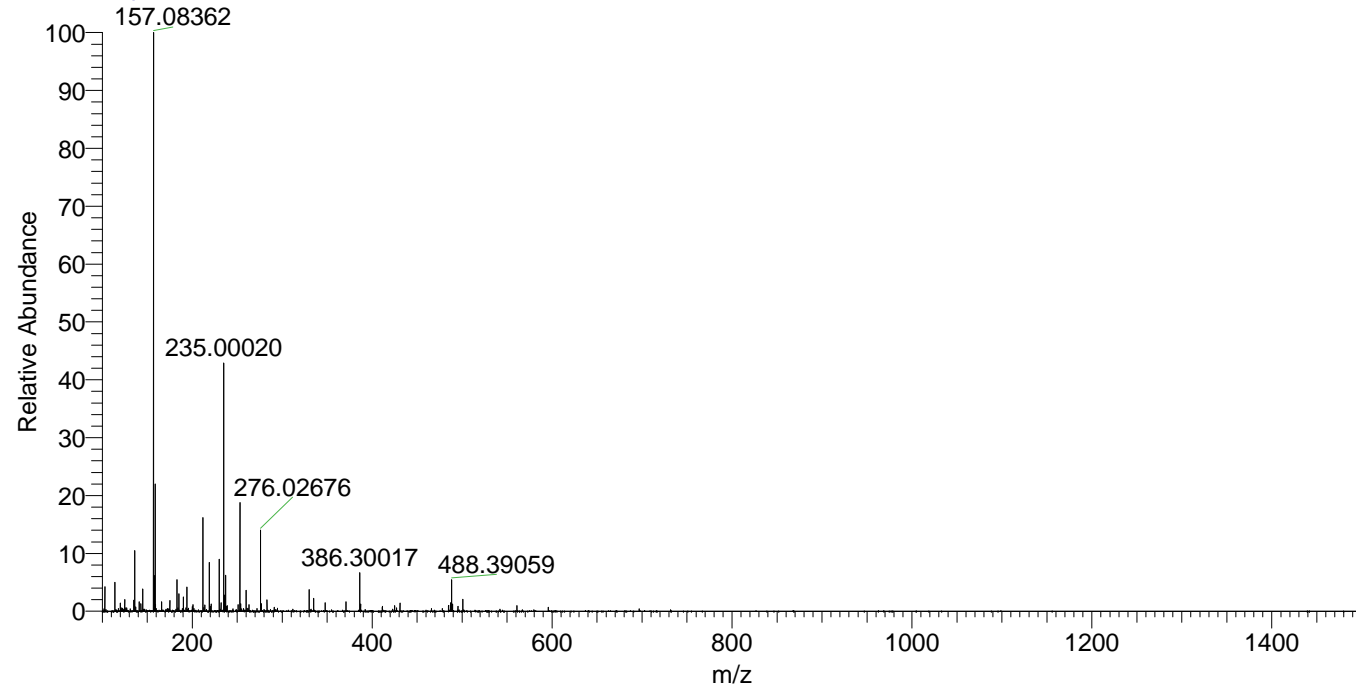
NL: 1.17E6
 Base Peak m/z=
 488.38863-488.39351 F:
 FTMS + p ESI Full ms
 [100.00-1500.00] MS
 Lcornutus_HDX

NL: 1.09E5
 Base Peak m/z=
 245.20136-245.20382 F:
 FTMS + p ESI Full ms
 [100.00-1500.00] MS
 Lcornutus_HDX

Lcornutus_HDX#815 RT: 5.18
 T: FTMS + p ESI Full ms [100.00-1500.00]
 m/z= 488.00000-489.00000

m/z	Intensity	Relative	Delta (ppm)	Composition
488.39059	1167656.8	100.00	0.15	C ₂₄ H ₃₄ ² H ₉ O ₄ N ₆
			-3.02	C ₂₄ H ₃₆ ² H ₈ O ₄ N ₆
			3.32	C ₂₄ H ₃₂ ² H ₁₀ O ₄ N ₆

Lcornutus_HDX #815 RT: 5.18 AV: 1 NL: 2.12E7
 T: FTMS + p ESI Full ms [100.00-1500.00]



Lcornutus_HDX #815 RT: 5.18 AV: 1 NL: 1.16E6
 T: FTMS + p ESI Full ms [100.00-1500.00]

