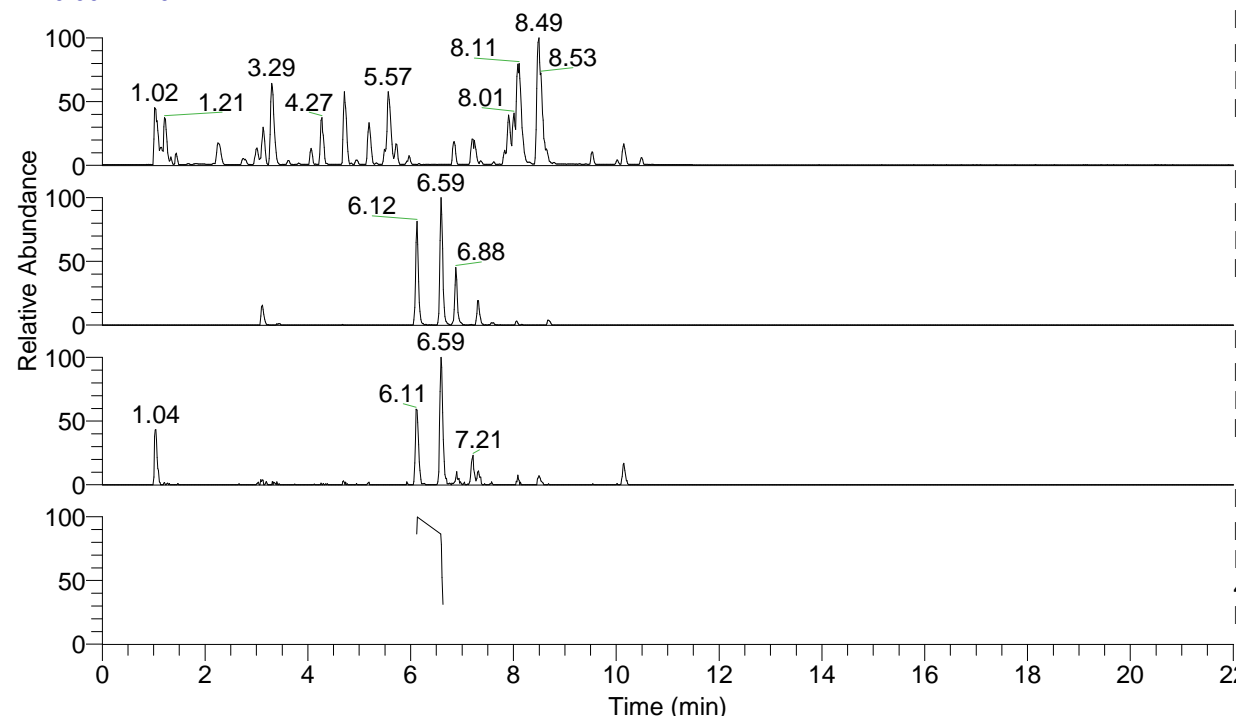


RT: 0.00 - 22.01



NL: 6.76E7
 Base Peak m/z= 100.00000-1500.00000 F:
 FTMS + p ESI Full ms [100.00-1500.00]
 MS Lcornutus

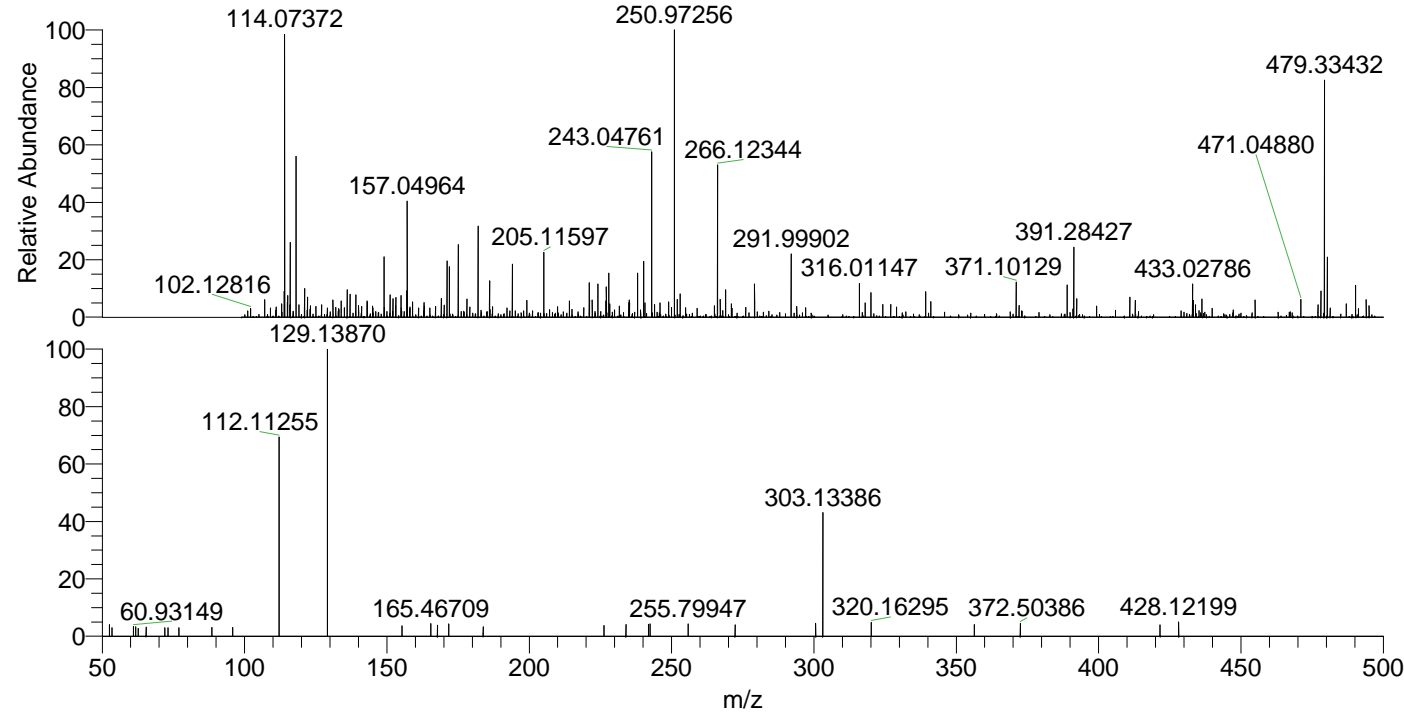
NL: 4.98E5
 Base Peak m/z= 479.33218-479.33698 F:
 FTMS + p ESI Full ms [100.00-1500.00]
 MS Lcornutus

NL: 1.63E5
 Base Peak m/z= 240.17000-240.17240 F:
 FTMS + p ESI Full ms [100.00-1500.00]
 MS Lcornutus

NL: 6.46E4
 Base Peak m/z= 50.00000-1500.00000 F:
 FTMS + p ESI d Full ms2
 479.33@hcd35.00 [50.00-505.00] MS
 Lcornutus

Lcornutus#2441-2446 RT: 6.12-6.13 AV:
 F: FTMS + p ESI d Full ms2 479.33 ...
 m/z= 50.00000-1000.00000

m/z	Intensity	Relative
52.48321	2260.3	3.94
53.45084	1637.1	2.85
60.93149	1914.1	3.34
61.71809	1848.3	3.22
62.64603	1531.0	2.67
65.40635	1786.5	3.12
71.95808	1681.5	2.93
73.10722	1679.9	2.93
76.94314	1694.5	2.95
88.46381	1776.9	3.10
95.78981	1737.5	3.03
112.11255	38628.2	67.36
129.13870	57344.8	100.00
155.33564	2008.5	3.50
165.46709	2522.7	4.40
167.73896	2175.5	3.79
171.68823	2400.5	4.19
183.81261	1848.2	3.22
226.23663	2156.3	3.76
233.96990	2256.0	3.93
241.90989	2297.2	4.01
242.43421	2420.7	4.22
255.79947	2481.7	4.33
272.31792	2212.3	3.86
300.61872	2497.5	4.36
303.13386	24352.0	42.47
320.16295	2676.1	4.67
356.35954	2254.0	3.93
372.50386	2506.2	4.37
421.59176	2208.2	3.85
428.12199	2736.2	4.77



NL: 4.90E5
 Lcornutus#2443 RT: 6.12
 AV: 1 T: FTMS + p ESI
 Full lock ms
 [100.00-1500.00]

NL: 5.55E4
 Lcornutus#2437-2452 RT:
 6.12-6.13 AV: 2 F: FTMS
 + p ESI d Full ms2
 479.33@hcd35.00
 [50.00-505.00]