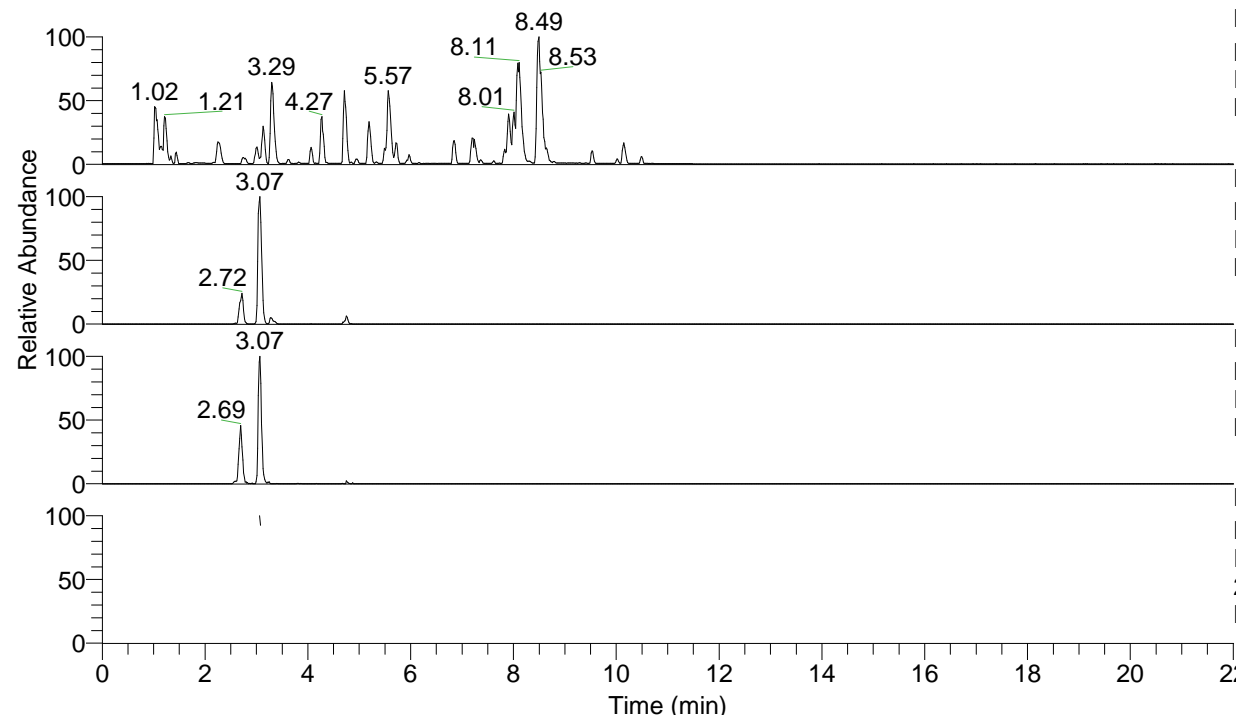


RT: 0.00 - 22.01



NL: 6.76E7
 Base Peak m/z= 100.00000-1500.00000 F:
 FTMS + p ESI Full ms [100.00-1500.00]
 MS Lcornutus

NL: 2.29E6
 Base Peak m/z= 478.34817-478.35295 F:
 FTMS + p ESI Full ms [100.00-1500.00]
 MS Lcornutus

NL: 5.72E5
 Base Peak m/z= 239.67799-239.68039 F:
 FTMS + p ESI Full ms [100.00-1500.00]
 MS Lcornutus

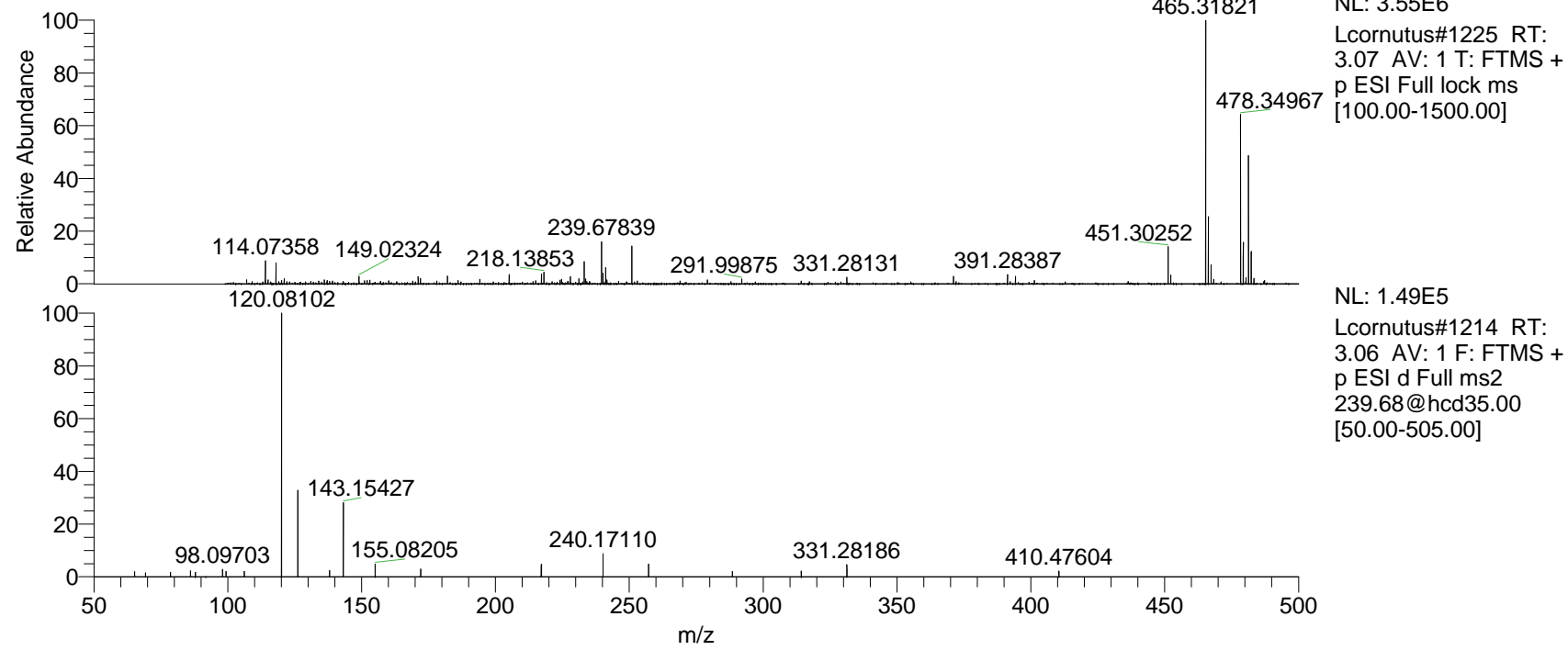
NL: 1.55E5
 Base Peak m/z= 50.00000-1500.00000 F:
 FTMS + p ESI d Full ms2
 239.68@hcd35.00 [50.00-505.00] MS
 Lcornutus

Lcornutus#1223 RT: 3.06

F: FTMS + p ESI d Full ms2 239.68 ...

m/z= 50.00000-1000.00000

m/z	Intensity	Relative
65.23475	2922.1	1.88
69.32333	2322.3	1.50
78.61476	2497.1	1.61
86.09718	3435.0	2.21
87.89603	2493.6	1.61
98.09703	4282.9	2.76
99.39117	3215.2	2.07
106.17440	3053.8	1.97
120.08102	155329.0	100.00
126.12784	48831.7	31.44
138.05612	3610.3	2.32
143.15427	41901.5	26.98
155.08205	7440.6	4.79
155.10463	3675.0	2.37
172.10762	4410.9	2.84
217.09697	6965.4	4.48
217.23907	6987.3	4.50
240.17110	13078.3	8.42
257.19727	7178.3	4.62
288.50821	3060.8	1.97
314.25430	3311.1	2.13
331.28186	6914.6	4.45
410.47604	3188.4	2.05



NL: 3.55E6
 Lcornutus#1225 RT:
 3.07 AV: 1 T: FTMS +
 p ESI Full lock ms
 [100.00-1500.00]

NL: 1.49E5
 Lcornutus#1214 RT:
 3.06 AV: 1 F: FTMS +
 p ESI d Full ms2
 239.68@hcd35.00
 [50.00-505.00]