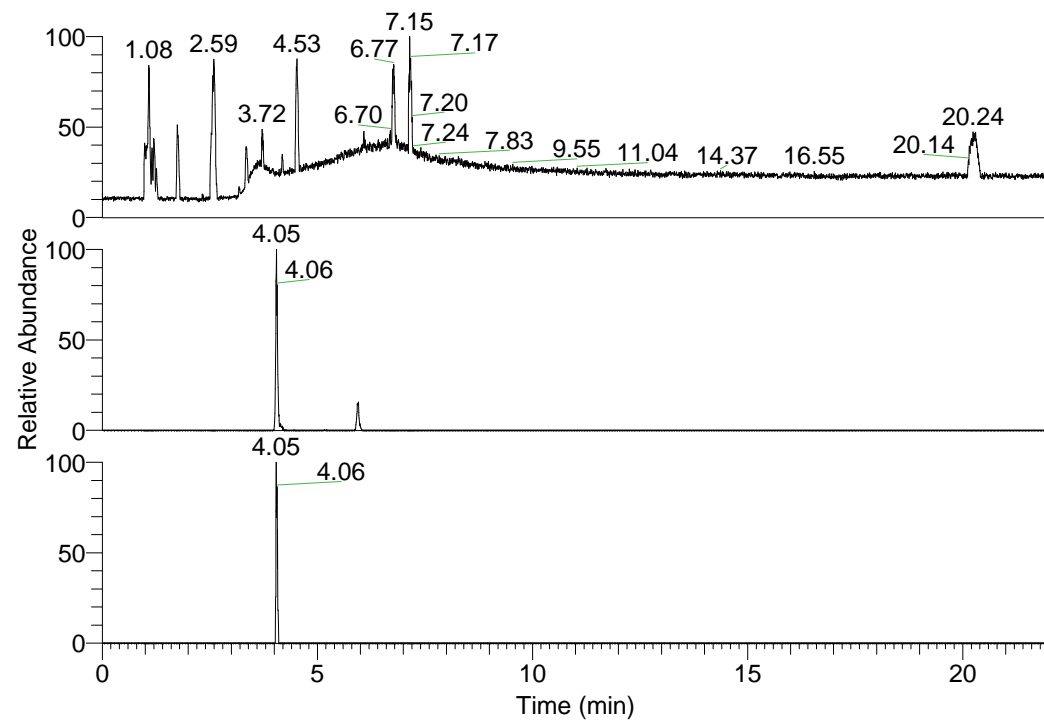


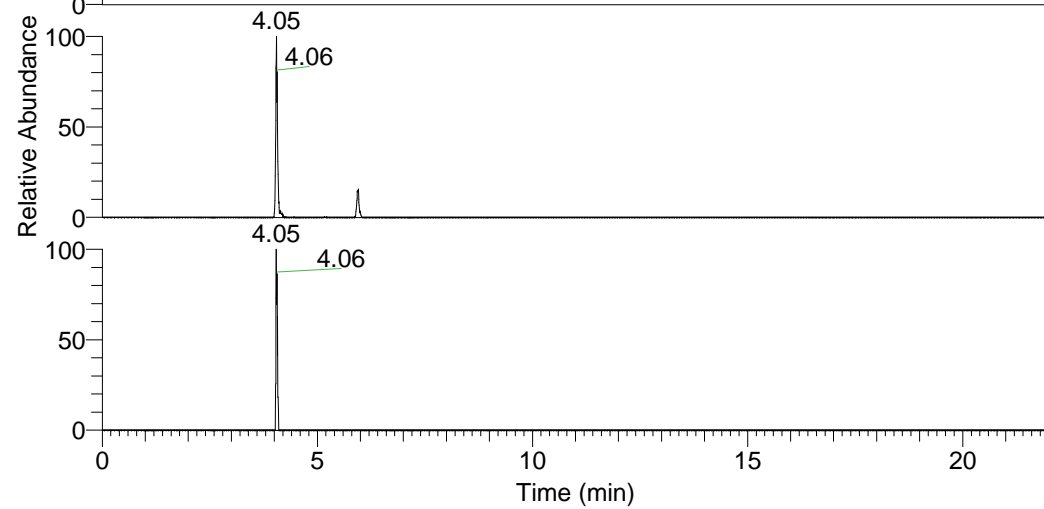
RT: 0.00 - 22.01



NL: 6.93E7
Base Peak m/z=
100.00000-1500.00000 F:
FTMS + p ESI Full ms
[100.00-1500.00] MS
Lcornutus_HDX

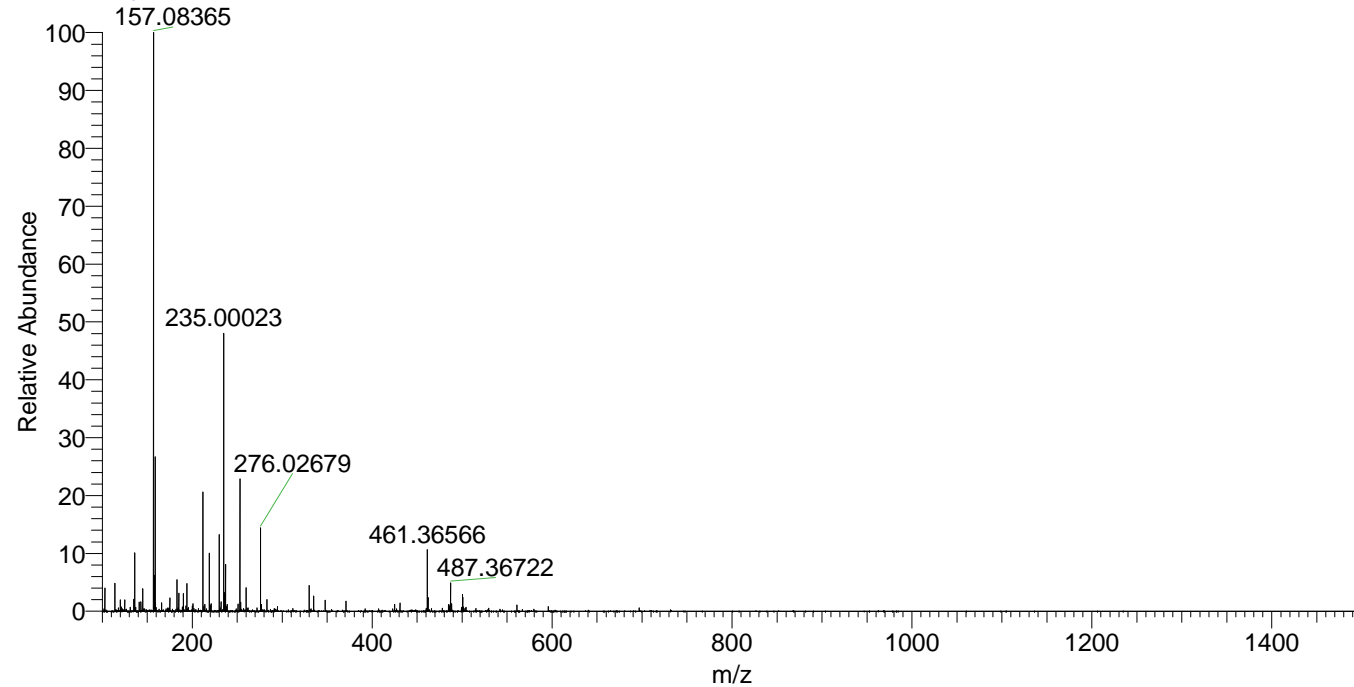
Lcornutus_HDX#631 RT: 4.05
T: FTMS + p ESI Full ms [100.00-1500.00]
m/z = 487.00000-488.00000

m/z	Intensity	Relative	Delta (ppm)	Composition
487.36722	920471.8	100.00	0.40	C ₂₃ H ₂₇ ² H ₁₁ O ₄ N ₇
			-2.78	C ₂₃ H ₂₉ ² H ₁₀ O ₄ N ₇
			3.58	C ₂₃ H ₂₅ ² H ₁₂ O ₄ N ₇



NL: 9.20E5
Base Peak m/z=
487.36513-487.37001 F:
FTMS + p ESI Full ms
[100.00-1500.00] MS
Lcornutus_HDX

Lcornutus_HDX #631 RT: 4.05 AV: 1 NL: 1.76E7
T: FTMS + p ESI Full ms [100.00-1500.00]



Lcornutus_HDX #631 RT: 4.05 AV: 1 NL: 8.65E5
T: FTMS + p ESI Full ms [100.00-1500.00]

