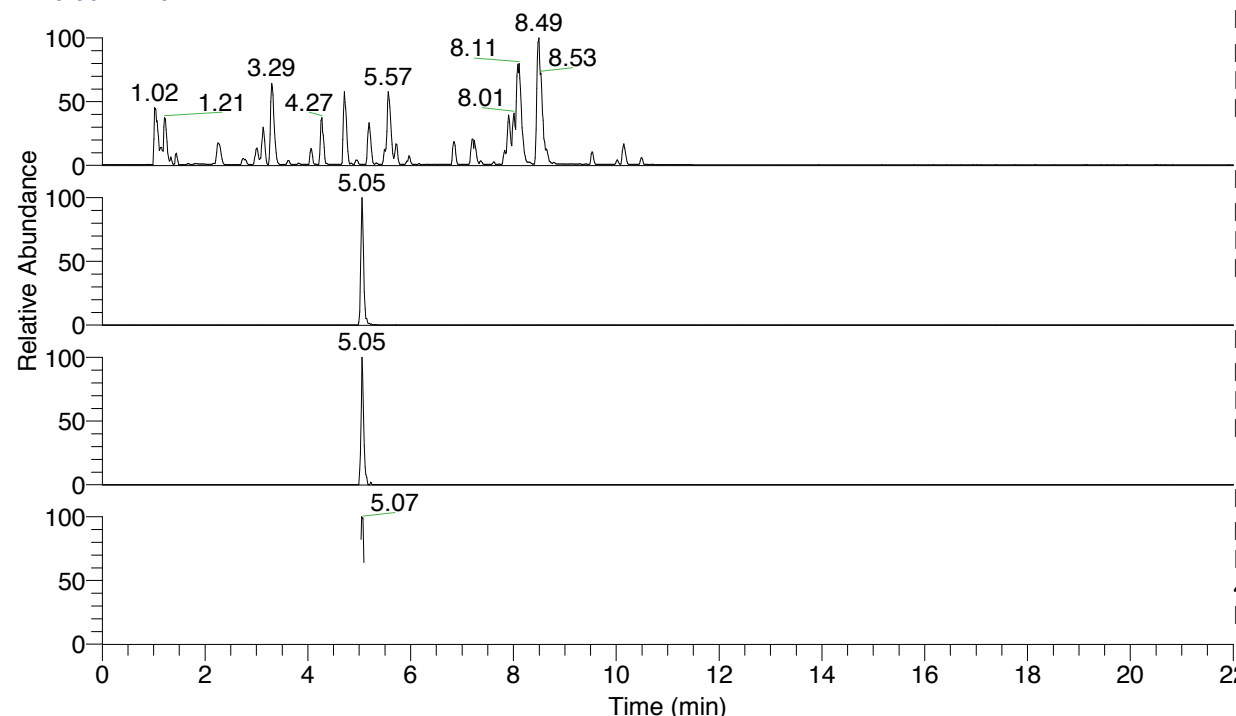


RT: 0.00 - 22.01



NL: 6.76E7
 Base Peak m/z= 100.00000-1500.00000 F:
 FTMS + p ESI Full ms [100.00-1500.00]
 MS Lcornutus

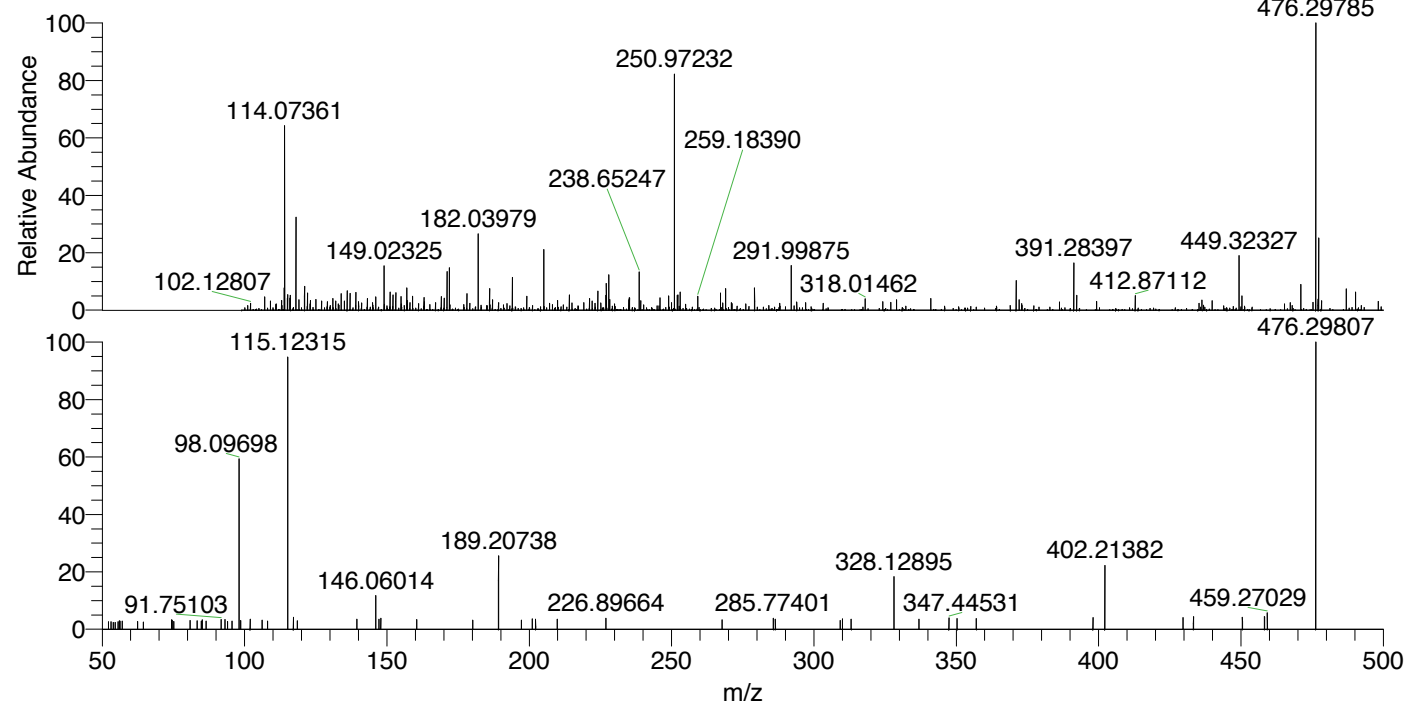
NL: 6.43E5
 Base Peak m/z= 476.29615-476.30091 F:
 FTMS + p ESI Full ms [100.00-1500.00]
 MS Lcornutus

NL: 8.52E4
 Base Peak m/z= 238.65199-238.65437 F:
 FTMS + p ESI Full ms [100.00-1500.00]
 MS Lcornutus

NL: 3.78E4
 Base Peak m/z= 50.00000-1500.00000 F:
 FTMS + p ESI d Full ms2
 476.30@hcd35.00 [50.00-505.00] MS
 Lcornutus

Lcornutus#2009-2024 RT: 5.03-5.07 AV:
 F: FTMS + p ESI d Full ms2 476.30 ...
 m/z= 50.00000-1000.00000

m/z	Intensity	Relative
55.99674	926.1	2.89
56.26898	896.0	2.80
57.04383	907.8	2.83
74.29922	1020.7	3.18
74.55332	995.3	3.11
75.09413	861.5	2.69
80.88112	975.5	3.04
83.31683	935.0	2.92
84.75734	880.7	2.75
85.15303	1032.3	3.22
86.48499	881.8	2.75
91.75103	1118.4	3.49
93.13593	1059.7	3.31
94.07007	880.0	2.75
95.61861	883.8	2.76
98.09698	18749.2	58.49
98.66435	984.4	3.07
101.95336	1107.4	3.45
106.14299	1014.1	3.16
108.06004	908.2	2.83
115.12315	30001.5	93.59
117.13547	1317.6	4.11
117.15391	984.1	3.07
118.49878	945.2	2.95
139.41739	1118.2	3.49
146.06014	3718.0	11.60
147.23324	1097.1	3.42
147.83581	1242.9	3.88
160.43493	1063.5	3.32
180.17892	1017.9	3.18
189.20738	8177.1	25.51
197.25503	1014.1	3.16
201.06525	1153.5	3.60
202.24362	1115.8	3.48
209.85403	1124.0	3.51
226.89664	1242.4	3.88
267.75567	1025.7	3.20
285.77401	1209.0	3.77
286.45987	1115.8	3.48
309.24021	966.2	3.01
310.04747	1154.6	3.60
313.09822	1098.7	3.43
328.12895	5749.2	17.94
336.88314	1095.0	3.42
347.44531	1254.0	3.91
350.30205	1166.3	3.64
357.04940	1160.7	3.62
398.04509	1273.7	3.97
402.21382	6988.8	21.80
429.67046	1269.0	3.96
433.33480	1366.3	4.26
450.51067	1326.1	4.14
458.28510	1427.2	4.45
459.27029	1812.1	5.65
476.29807	32054.9	100.00



NL: 6.36E5
 Lcornutus#2017 RT: 5.05
 AV: 1 T: FTMS + p ESI
 Full lock ms
 [100.00-1500.00]

NL: 3.13E4
 Lcornutus#2008-2028 RT:
 5.03-5.07 AV: 4 F: FTMS
 + p ESI d Full ms2
 476.30@hcd35.00
 [50.00-505.00]

Lcornutus#2009-2024 RT: 5.03-5.07 AV: 4

F: FTMS + p ESI d Full ms2 476.30@hcd35.00 [50.00-505.00]

m/z= 50.00000-1000.00000

m/z	Intensity	Relative
52.14257	820.6	2.56
53.12746	835.4	2.61
53.92586	767.7	2.39
54.52982	787.6	2.46
55.61398	818.4	2.55
55.99674	926.1	2.89
56.26898	896.0	2.80
57.04383	907.8	2.83
62.46065	851.6	2.66
64.45877	796.9	2.49
74.29922	1020.7	3.18
74.55332	995.3	3.11
75.09413	861.5	2.69
80.88112	975.5	3.04
83.31683	935.0	2.92
84.75734	880.7	2.75
85.15303	1032.3	3.22
86.48499	881.8	2.75
91.75103	1118.4	3.49
93.13593	1059.7	3.31
94.07007	880.0	2.75
95.61861	883.8	2.76
98.09698	18749.2	58.49
98.66435	984.4	3.07
101.95336	1107.4	3.45
106.14299	1014.1	3.16
108.06004	908.2	2.83
115.12315	30001.5	93.59
117.13547	1317.6	4.11
117.15391	984.1	3.07
118.49878	945.2	2.95
139.41739	1118.2	3.49
146.06014	3718.0	11.60
147.23324	1097.1	3.42
147.83581	1242.9	3.88
160.43493	1063.5	3.32
180.17892	1017.9	3.18
189.20738	8177.1	25.51
197.25503	1014.1	3.16

Lcornutus#2009-2024 RT: 5.03-5.07 AV: 4

F: FTMS + p ESI d Full ms2 476.30@hcd35.00 [50.00-505.00]

m/z= 50.00000-1000.00000

m/z	Intensity	Relative
201.06525	1153.5	3.60
202.24362	1115.8	3.48
209.85403	1124.0	3.51
226.89664	1242.4	3.88
267.75567	1025.7	3.20
285.77401	1209.0	3.77
286.45987	1115.8	3.48
309.24021	966.2	3.01
310.04747	1154.6	3.60
313.09822	1098.7	3.43
328.12895	5749.2	17.94
336.88314	1095.0	3.42
347.44531	1254.0	3.91
350.30205	1166.3	3.64
357.04940	1160.7	3.62
398.04509	1273.7	3.97
402.21382	6988.8	21.80
429.67046	1269.0	3.96
433.33480	1366.3	4.26
450.51067	1326.1	4.14
458.28510	1427.2	4.45
459.27029	1812.1	5.65
476.29807	32054.9	100.00