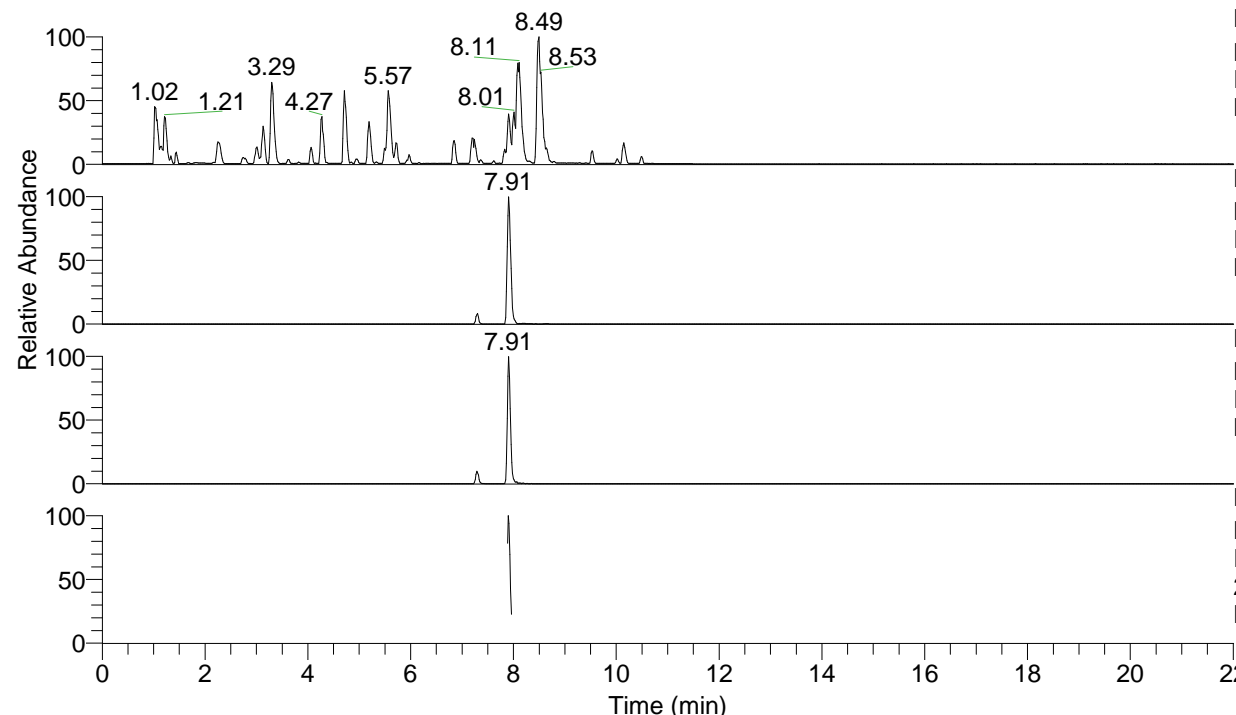


RT: 0.00 - 22.01



NL: 6.76E7
 Base Peak m/z= 100.00000-1500.00000 F:
 FTMS + p ESI Full ms [100.00-1500.00]
 MS Lcornutus

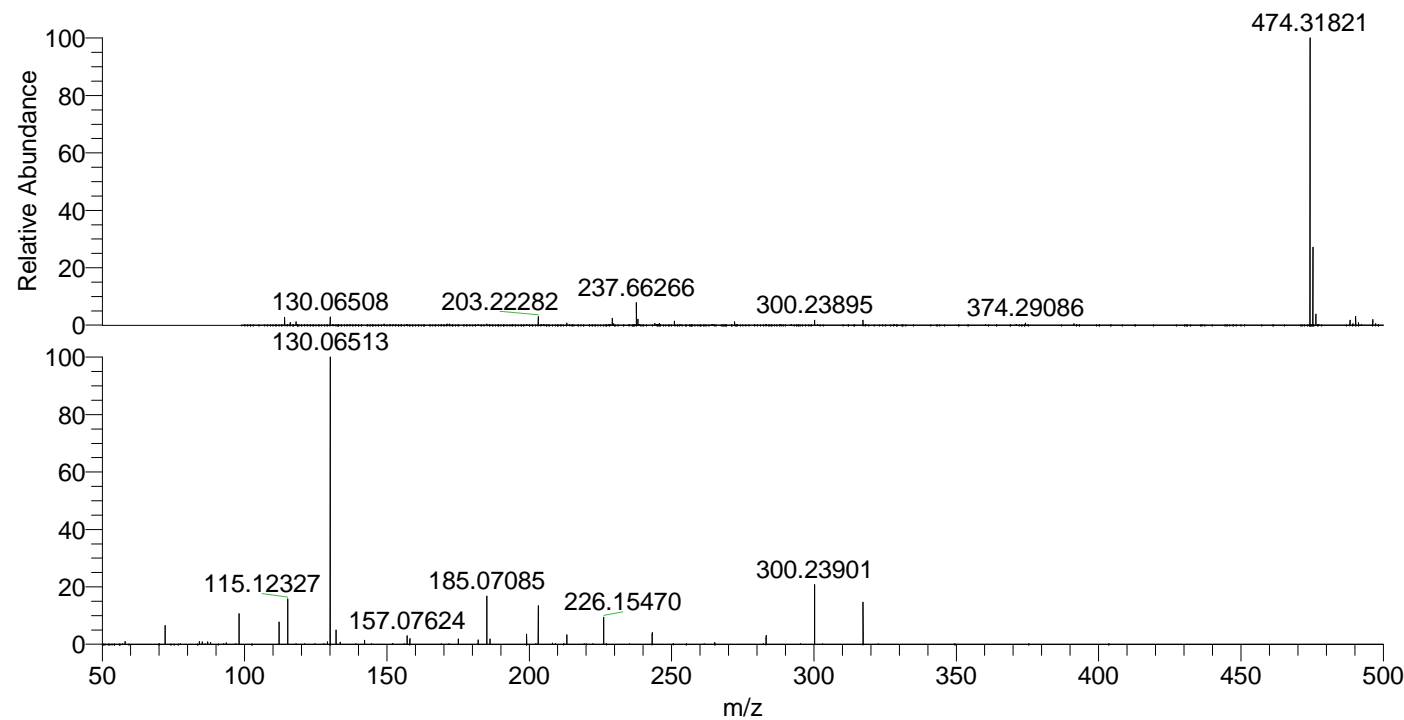
NL: 2.67E7
 Base Peak m/z= 474.31689-474.32163 F:
 FTMS + p ESI Full ms [100.00-1500.00]
 MS Lcornutus

NL: 2.09E6
 Base Peak m/z= 237.66235-237.66473 F:
 FTMS + p ESI Full ms [100.00-1500.00]
 MS Lcornutus

NL: 7.93E5
 Base Peak m/z= 50.00000-1500.00000 F:
 FTMS + p ESI d Full ms2
 237.66@hcd35.00 [50.00-505.00] MS
 Lcornutus

Lcornutus#3142-3159 RT: 7.89-7.93 AV:
 F: FTMS + p ESI d Full ms2 237.66 ...
 m/z= 50.00000-1000.00000

m/z	Intensity	Relative
58.06593	6143.7	0.97
72.08149	40571.4	6.41
84.08127	5997.7	0.95
85.08914	4962.1	0.78
87.05577	5291.5	0.84
88.03987	4177.0	0.66
98.09688	66681.3	10.53
112.11239	48122.5	7.60
115.12327	97505.2	15.40
129.13879	5449.6	0.86
130.06513	633174.3	100.00
132.14952	30514.0	4.82
133.59662	4640.8	0.73
142.10976	8925.6	1.41
142.13397	7563.9	1.19
157.07624	18197.5	2.87
158.05972	12277.3	1.94
175.08662	11574.8	1.83
182.06042	9406.5	1.49
185.07085	103169.2	16.29
186.19625	11286.9	1.78
199.08657	22442.1	3.54
203.22292	82614.8	13.05
213.20729	20215.4	3.19
226.15470	58471.8	9.23
243.18134	24888.7	3.93
265.20255	3726.0	0.59
283.21223	19325.6	3.05
300.23901	132307.9	20.90
317.26532	91526.9	14.46



NL: 2.67E7
 Lcornutus#3151 RT: 7.91
 AV: 1 T: FTMS + p ESI
 Full ms [100.00-1500.00]

NL: 6.16E5
 Lcornutus#3139-3164 RT:
 7.89-7.93 AV: 4 F: FTMS
 + p ESI d Full ms2
 237.66@hcd35.00
 [50.00-505.00]