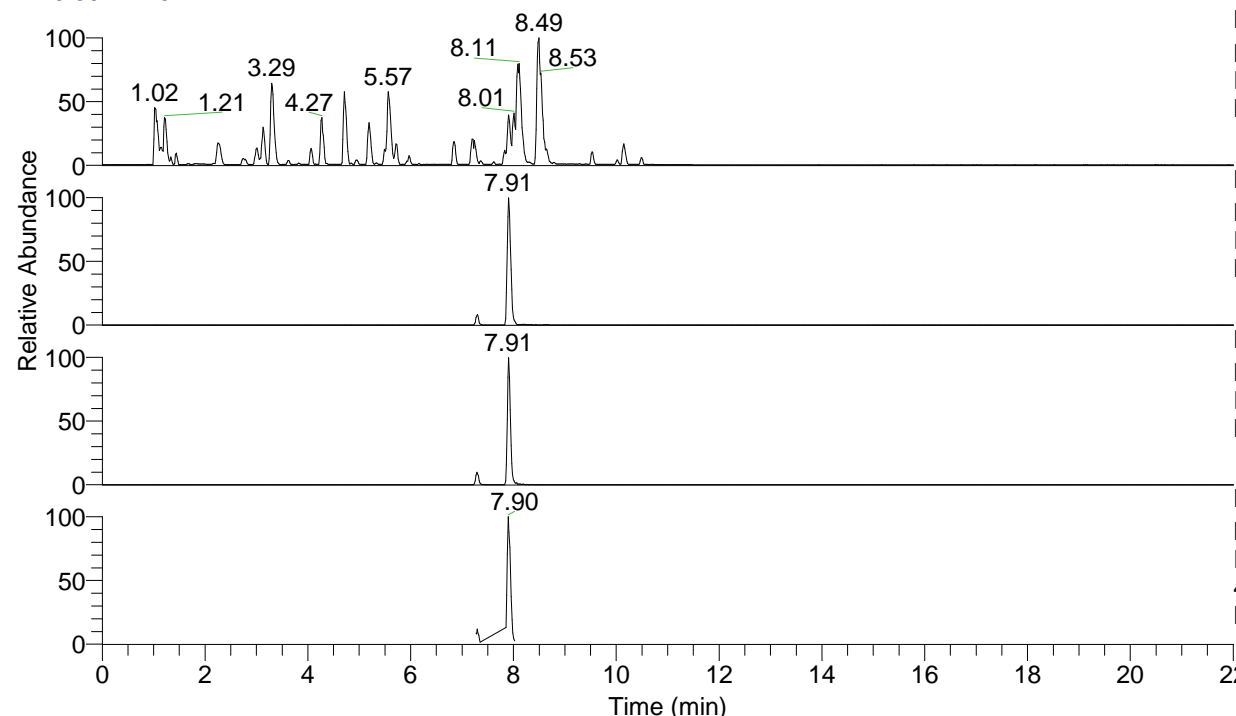


RT: 0.00 - 22.01



NL: 6.76E7  
 Base Peak m/z= 100.00000-1500.00000 F:  
 FTMS + p ESI Full ms [100.00-1500.00]  
 MS Lcornutus

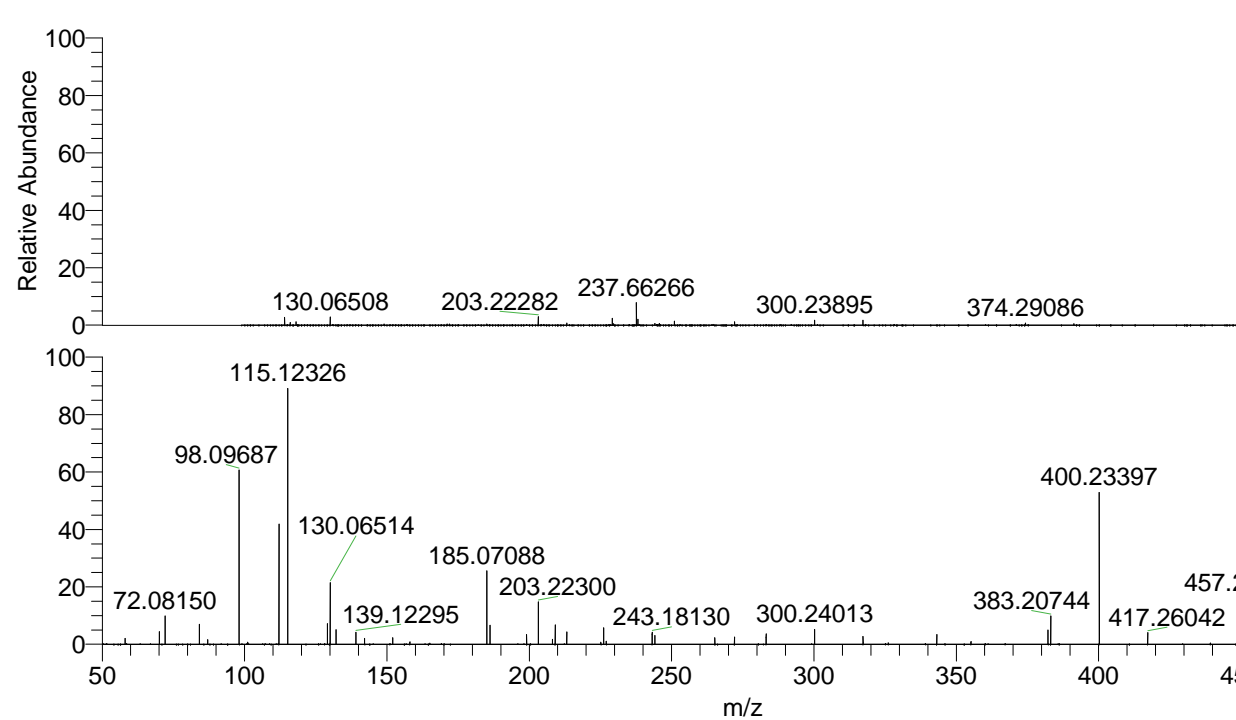
NL: 2.67E7  
 Base Peak m/z= 474.31689-474.32163 F:  
 FTMS + p ESI Full ms [100.00-1500.00]  
 MS Lcornutus

NL: 2.09E6  
 Base Peak m/z= 237.66235-237.66473 F:  
 FTMS + p ESI Full ms [100.00-1500.00]  
 MS Lcornutus

NL: 1.99E6  
 Base Peak m/z= 50.00000-1500.00000 F:  
 FTMS + p ESI d Full ms2  
 474.32@hcd35.00 [50.00-500.00] MS  
 Lcornutus

Lcornutus#3135-3176 RT: 7.87-7.97 AV: 8  
 F: FTMS + p ESI d Full ms2 474.32@h ...  
 m/z= 50.00000-1000.00000

m/z	Intensity	Relative
58.06588	24258.7	2.06
70.06582	50363.2	4.29
72.08149	116449.6	9.91
84.08135	80667.2	6.87
87.05586	18394.7	1.57
98.09687	731868.4	62.30
101.10769	8582.9	0.73
112.11239	492657.8	41.93
115.12325	1053501.6	89.67
129.13873	86405.9	7.35
130.06514	252862.2	21.52
132.14949	58451.4	4.98
139.12296	49301.9	4.20
142.13405	24642.2	2.10
152.07061	26245.2	2.23
158.05998	9442.2	0.80
185.07088	298989.7	25.45
186.19658	78676.0	6.70
199.08689	39901.0	3.40
203.22298	173460.2	14.76
208.14466	19298.9	1.64
209.12850	76881.4	6.54
213.20730	49349.3	4.20
225.17132	7810.9	0.66
226.15477	65239.8	5.55
227.08192	12308.3	1.05
243.18133	48446.8	4.12
244.10849	35475.3	3.02
265.20224	27754.2	2.36
272.10245	29614.4	2.52
283.21284	42160.0	3.59
300.24015	62026.0	5.28
317.26588	32423.8	2.76
343.17627	39880.1	3.39
355.17500	10505.3	0.89
382.22397	56858.5	4.84
383.20744	118578.6	10.09
400.23396	619037.2	52.69
417.26040	48574.0	4.13
456.31004	10961.4	0.93
457.29188	192742.5	16.41
474.31834	1174816.9	100.00



NL: 2.67E7  
 Lcornutus#3151 RT: 7.91  
 AV: 1 T: FTMS + p ESI  
 Full ms [100.00-1500.00]

NL: 1.28E6  
 Lcornutus#3134-3170 RT:  
 7.87-7.96 AV: 7 F: FTMS  
 + p ESI d Full ms2  
 474.32@hcd35.00  
 [50.00-500.00]