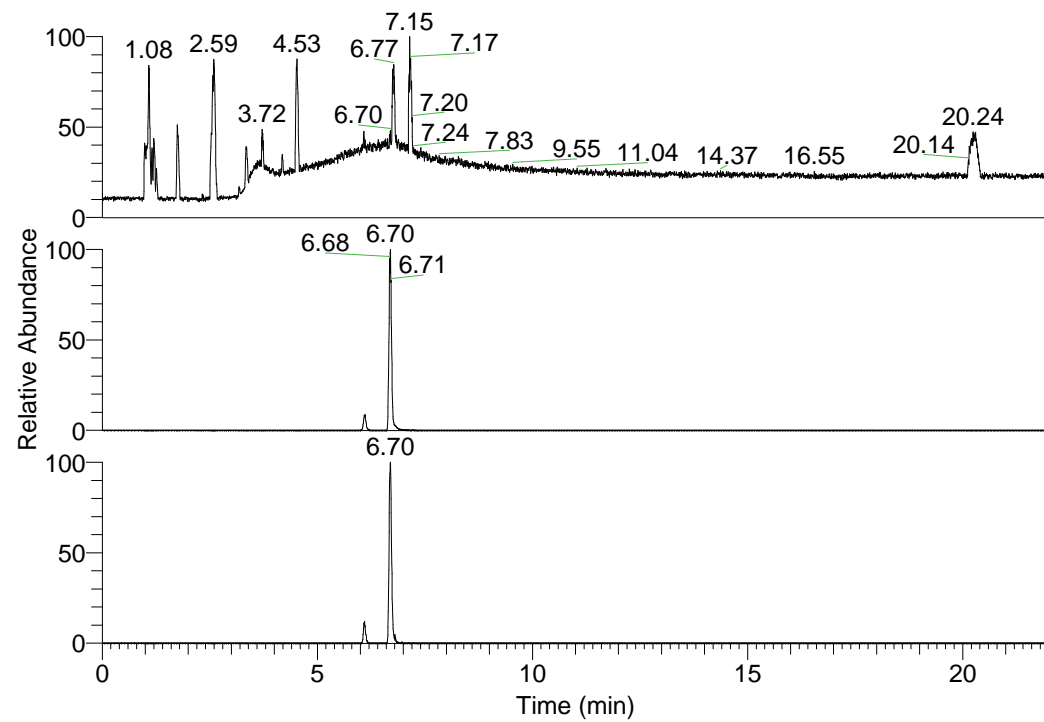


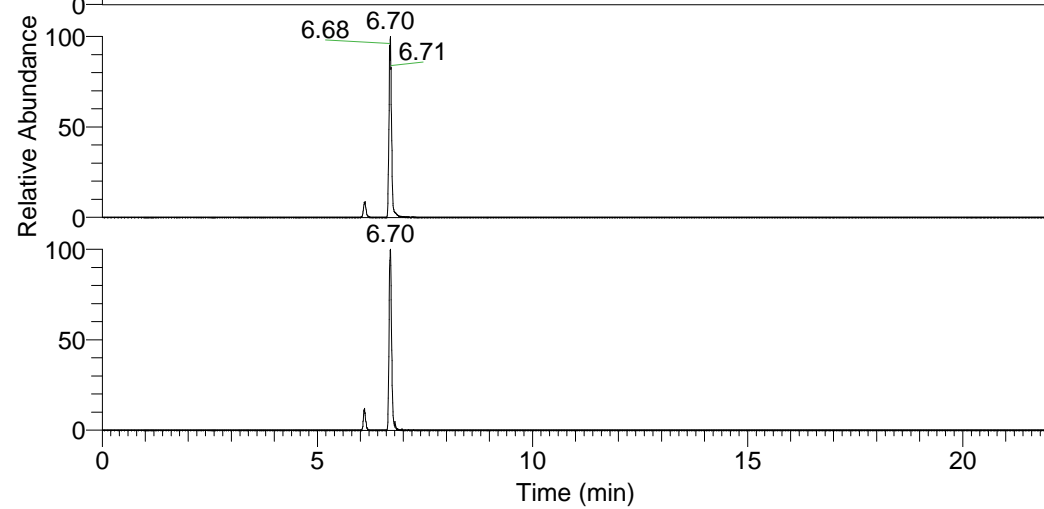
RT: 0.00 - 22.01



NL: 6.93E7
Base Peak m/z=
100.00000-1500.00000 F:
FTMS + p ESI Full ms
[100.00-1500.00] MS
Lcornutus_HDX

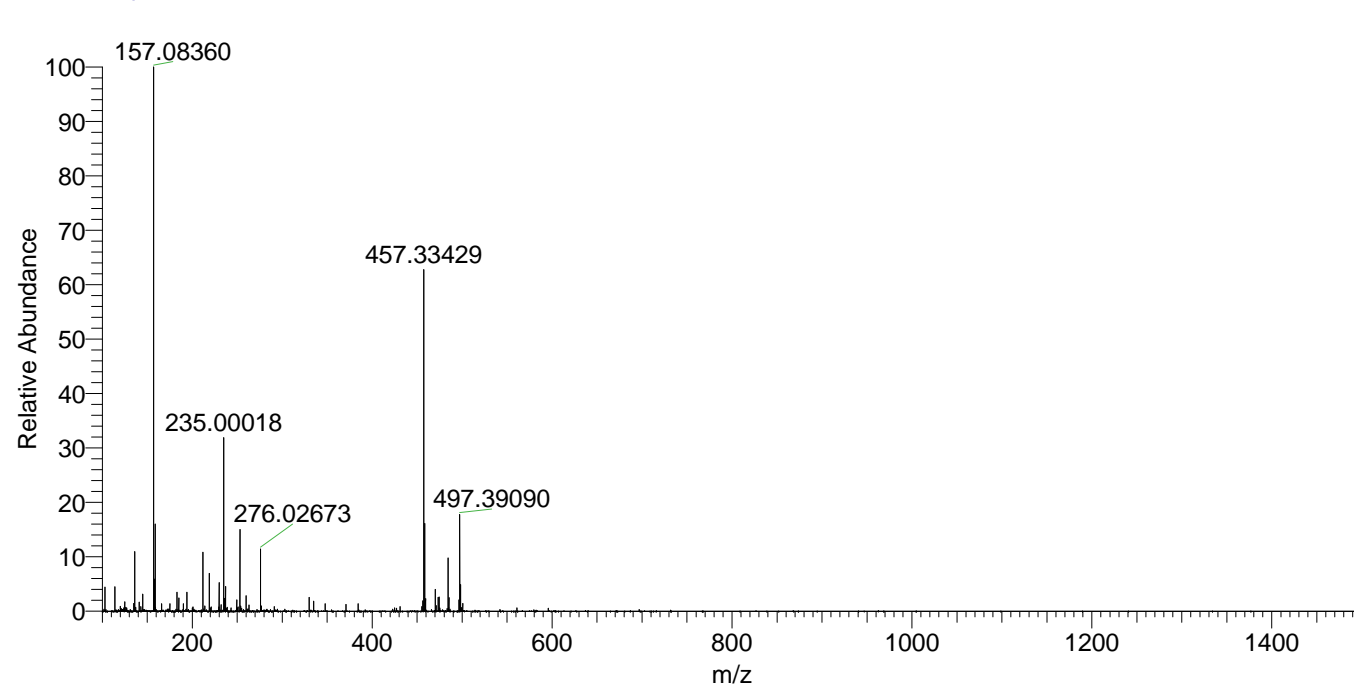
Lcornutus_HDX#966 RT: 6.11
T: FTMS + p ESI Full ms [100.00-1500.00]
m/z= 484.00000-485.00000

| m/z | Intensity | Relative | Delta (ppm) | Composition |
|-----------|-----------|----------|-------------|--|
| 484.38162 | 2912611.5 | 100.00 | 0.29 | C ₂₄ H ₃₀ ² H ₁₀ O ₃ N ₇ |
| | | | -2.91 | C ₂₄ H ₃₂ ² H ₉ O ₃ N ₇ |
| | | | 3.49 | C ₂₄ H ₂₈ ² H ₁₁ O ₃ N ₇ |



NL: 3.35E7
Base Peak m/z=
484.37961-484.38445 F:
FTMS + p ESI Full ms
[100.00-1500.00] MS
Lcornutus_HDX

Lcornutus_HDX #966 RT: 6.11 AV: 1 NL: 2.96E7
T: FTMS + p ESI Full ms [100.00-1500.00]



Lcornutus_HDX #966 RT: 6.11 AV: 1 NL: 2.90E6
T: FTMS + p ESI Full ms [100.00-1500.00]

