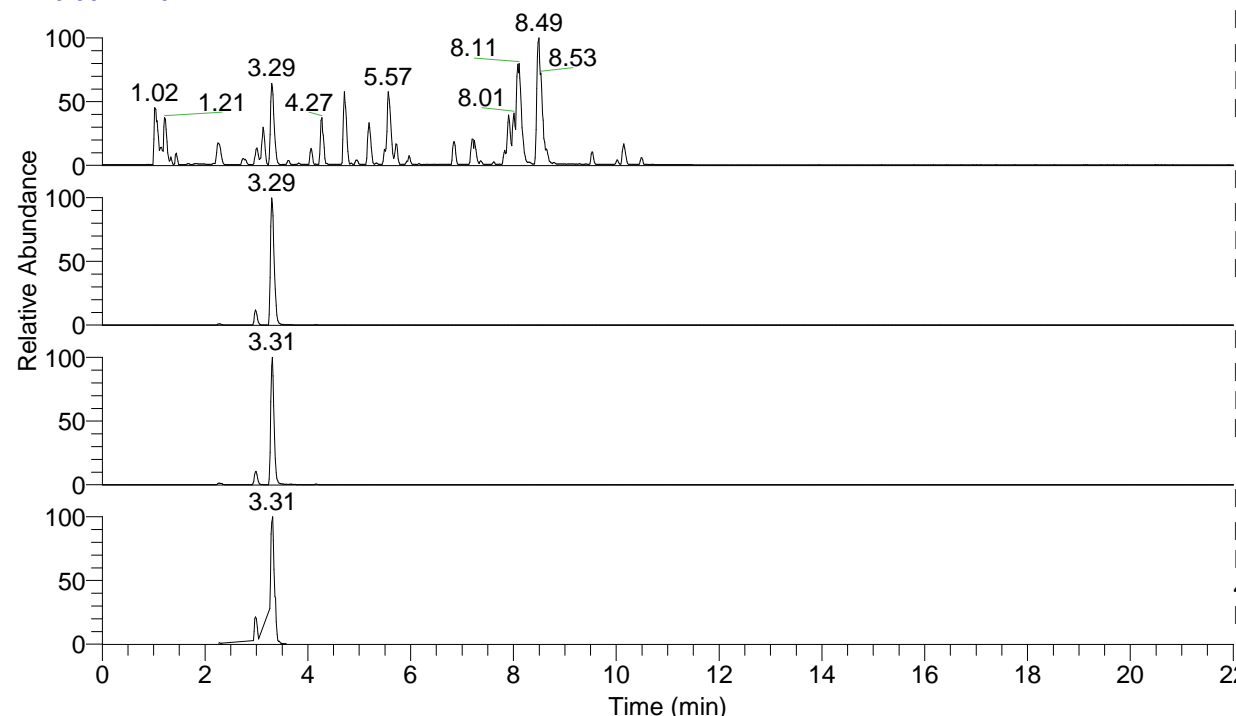


RT: 0.00 - 22.01



NL: 6.76E7
 Base Peak m/z= 100.00000-1500.00000 F:
 FTMS + p ESI Full ms [100.00-1500.00]
 MS Lcornutus

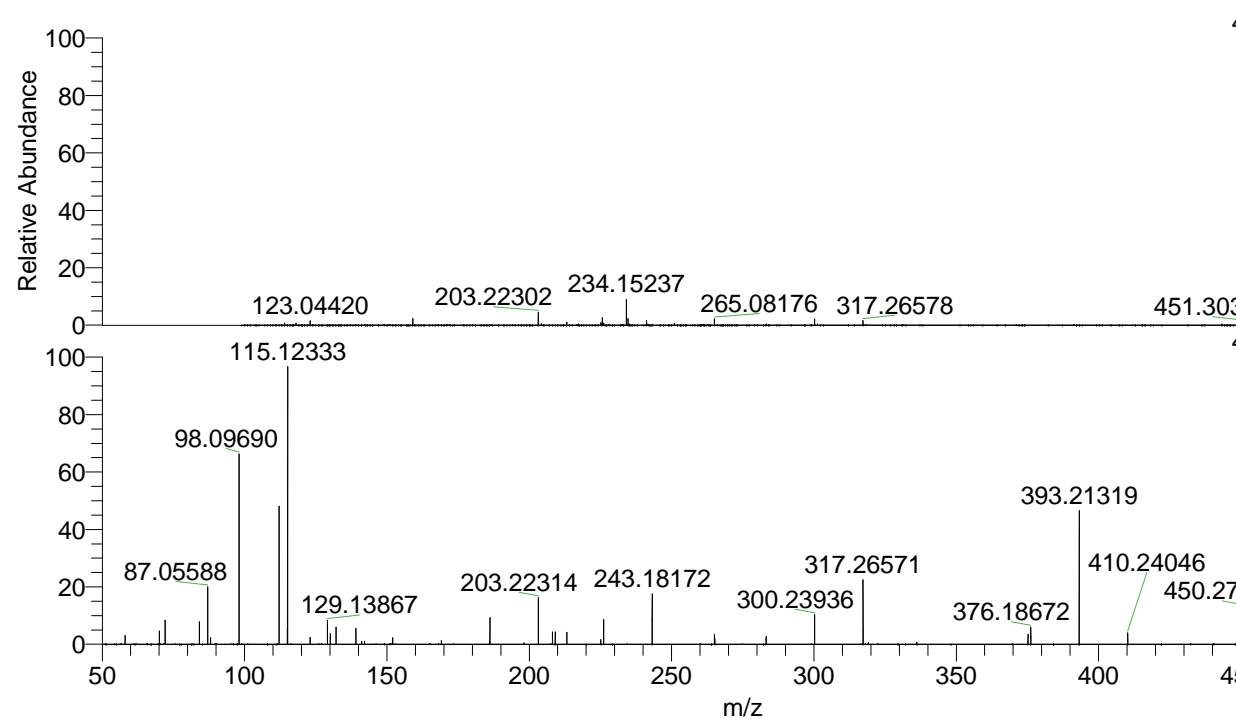
NL: 4.35E7
 Base Peak m/z= 467.29585-467.30053 F:
 FTMS + p ESI Full ms [100.00-1500.00]
 MS Lcornutus

NL: 4.33E6
 Base Peak m/z= 234.15184-234.15418 F:
 FTMS + p ESI Full ms [100.00-1500.00]
 MS Lcornutus

NL: 3.15E6
 Base Peak m/z= 50.00000-1500.00000 F:
 FTMS + p ESI d Full ms2
 467.30@hcd35.00 [50.00-495.00] MS
 Lcornutus

Lcornutus#1304-1334 RT: 3.27-3.34 AV: 6
 F: FTMS + p ESI d Full ms2 467.30@h ...
 m/z= 50.00000-1000.00000

m/z	Intensity	Relative
58.06598	69900.2	2.98
70.06586	105477.8	4.49
72.08155	198402.9	8.45
84.08138	179695.1	7.66
87.05588	456460.2	19.45
88.03991	52323.5	2.23
98.09690	1558075.0	66.39
112.11246	1116490.4	47.57
115.05055	128289.6	5.47
115.12333	2251778.8	95.95
123.04445	56653.6	2.41
129.13867	193300.9	8.24
130.12275	85904.0	3.66
132.14972	135978.2	5.79
139.12308	129013.2	5.50
141.10240	25338.0	1.08
142.13424	25279.4	1.08
152.07098	52385.3	2.23
169.09742	30923.5	1.32
186.12405	24412.6	1.04
186.19668	211341.8	9.01
198.12412	11881.1	0.51
203.22314	375062.0	15.98
208.14457	101472.7	4.32
209.12885	97460.2	4.15
213.20759	96216.1	4.10
225.17090	35640.6	1.52
226.15511	197355.6	8.41
243.18172	402604.9	17.15
265.08192	77508.3	3.30
265.20262	46165.3	1.97
283.21327	63651.9	2.71
300.23936	240456.0	10.25
317.26571	514321.6	21.92
319.12888	14524.8	0.62
336.15509	16457.8	0.70
375.20352	82305.1	3.51
376.18672	135762.2	5.78
393.21319	1085587.3	46.26
410.24046	91621.2	3.90
449.28796	54247.5	2.31
450.27154	304823.8	12.99
467.29830	2346866.5	100.00



NL: 4.32E7
 Lcornutus#1315 RT: 3.29
 AV: 1 T: FTMS + p ESI
 Full ms [100.00-1500.00]

NL: 2.28E6
 Lcornutus#1302-1334 RT:
 3.27-3.34 AV: 6 F: FTMS
 + p ESI d Full ms2
 467.30@hcd35.00
 [50.00-495.00]