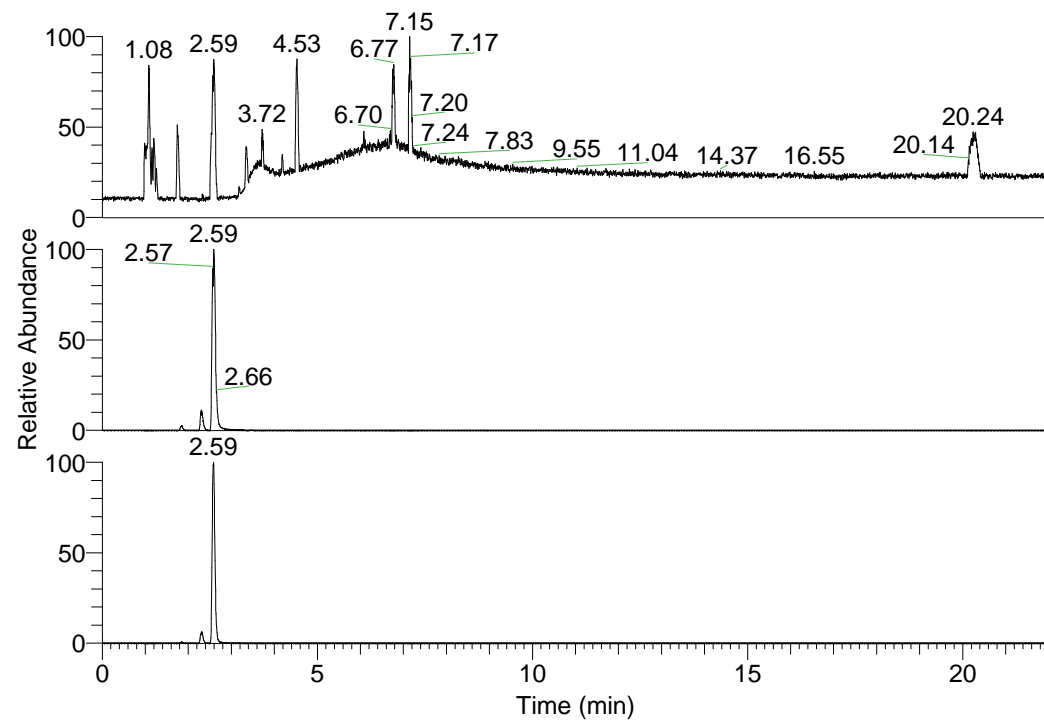


RT: 0.00 - 22.01



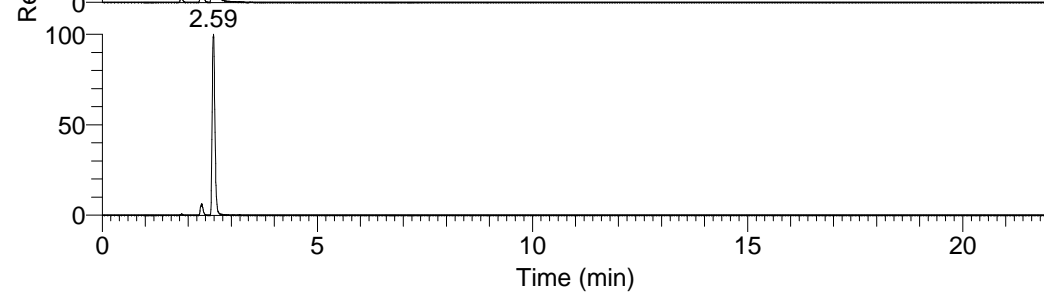
NL: 6.93E7  
 Base Peak m/z=  
 100.00000-1500.00000 F:  
 FTMS + p ESI Full ms  
 [100.00-1500.00] MS  
 Lcornutus\_HDX

Lcornutus\_HDX#353 RT: 2.31  
 T: FTMS + p ESI Full ms [100.00-1500.00]  
 m/z= 478.00000-479.00000

m/z	Intensity	Relative	Delta (ppm)	Composition
478.36676	5143617.0	100.00	0.15	C <sub>22</sub> H <sub>28</sub> <sup>2</sup> H <sub>11</sub> O <sub>5</sub> N <sub>6</sub>
			-3.09	C <sub>22</sub> H <sub>30</sub> <sup>2</sup> H <sub>10</sub> O <sub>5</sub> N <sub>6</sub>
			3.39	C <sub>22</sub> H <sub>26</sub> <sup>2</sup> H <sub>12</sub> O <sub>5</sub> N <sub>6</sub>

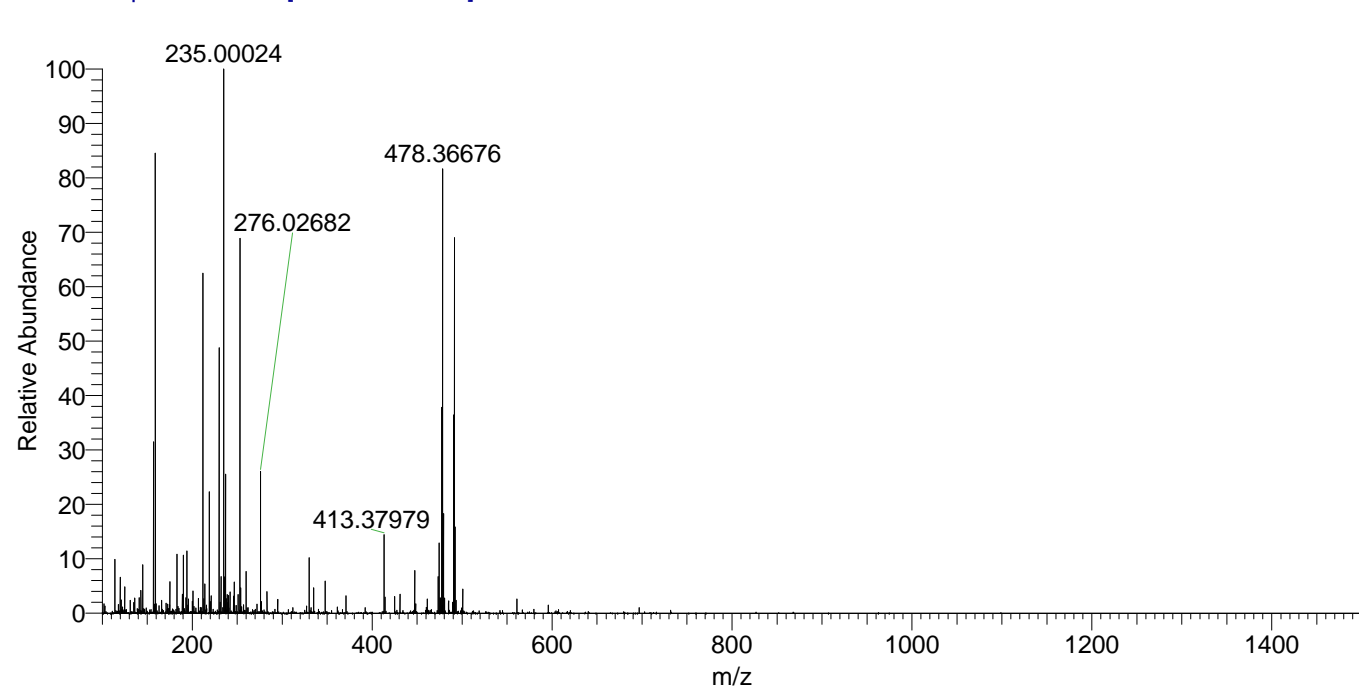


NL: 6.06E7  
 Base Peak m/z=  
 478.36485-478.36963 F:  
 FTMS + p ESI Full ms  
 [100.00-1500.00] MS  
 Lcornutus\_HDX



NL: 4.13E6  
 Base Peak m/z=  
 240.18947-240.19187 F:  
 FTMS + p ESI Full ms  
 [100.00-1500.00] MS  
 Lcornutus\_HDX

Lcornutus\_HDX #353 RT: 2.31 AV: 1 NL: 6.06E6  
 T: FTMS + p ESI Full ms [100.00-1500.00]



Lcornutus\_HDX #353 RT: 2.31 AV: 1 NL: 4.95E6  
 T: FTMS + p ESI Full ms [100.00-1500.00]

