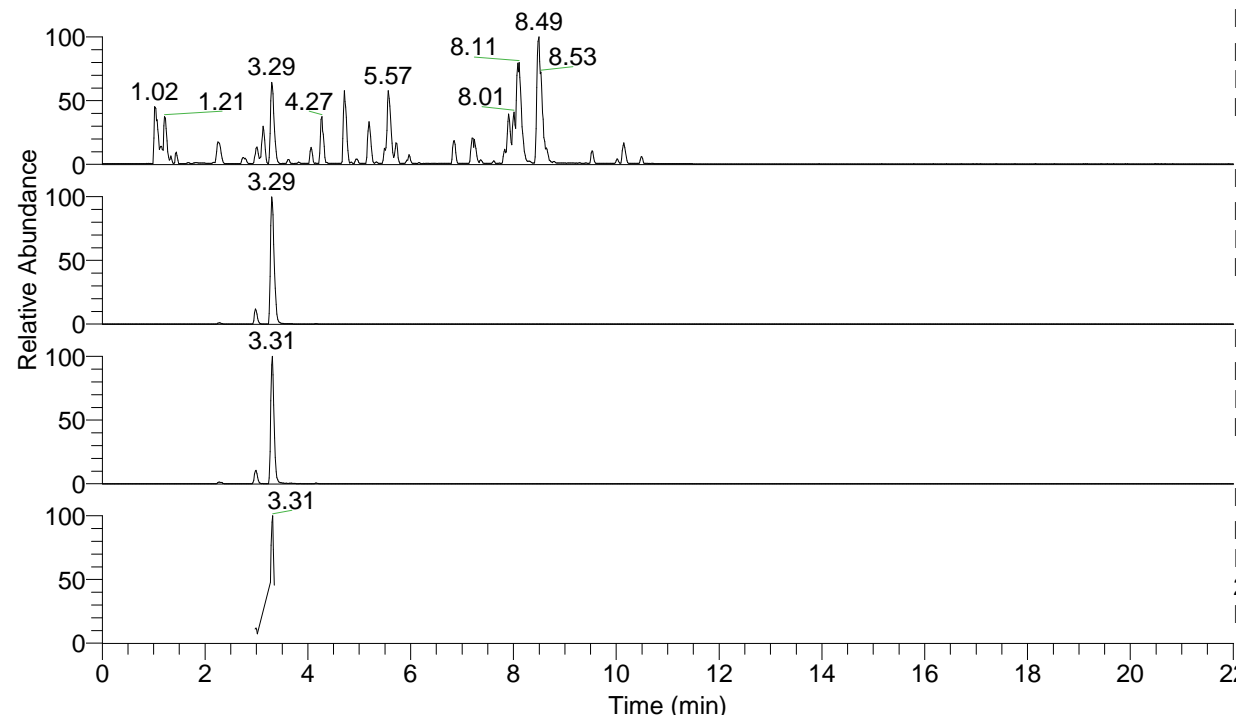


RT: 0.00 - 22.01



NL: 6.76E7
 Base Peak m/z= 100.00000-1500.00000 F:
 FTMS + p ESI Full ms [100.00-1500.00]
 MS Lcornutus

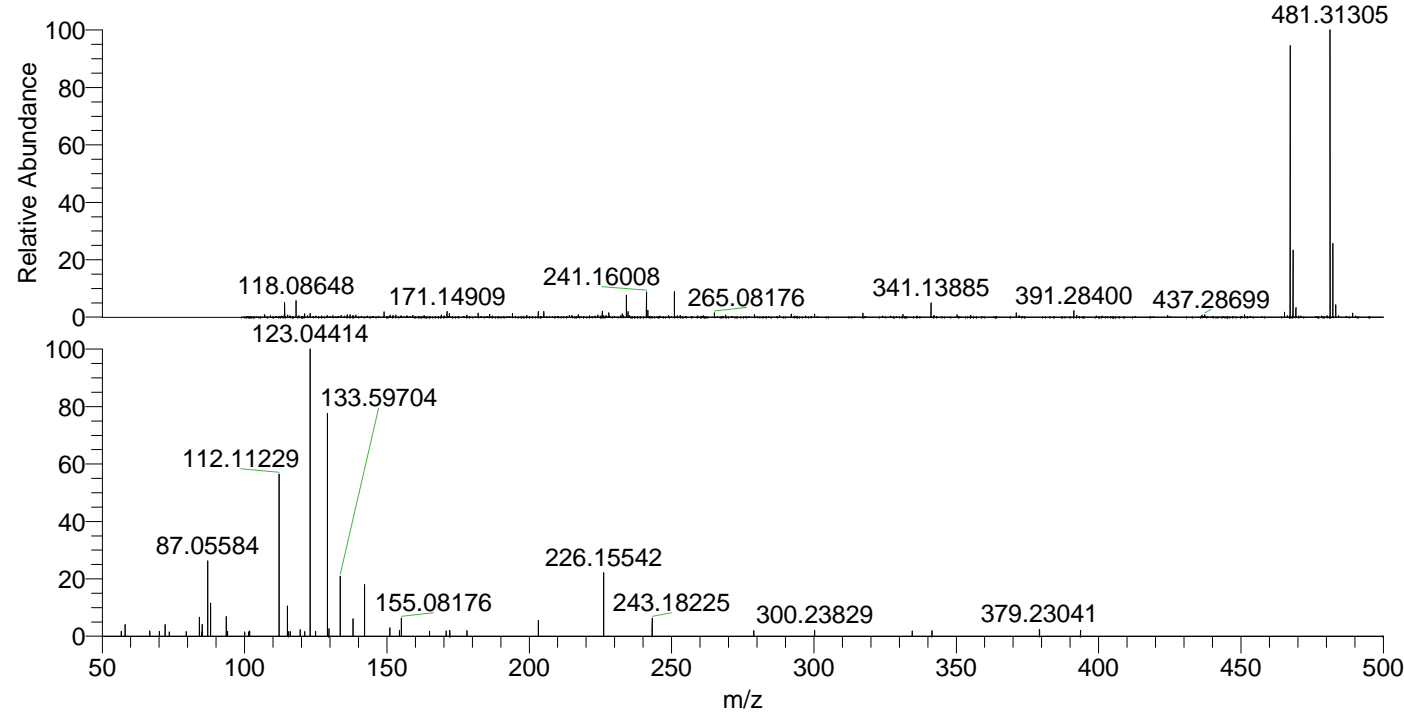
NL: 4.35E7
 Base Peak m/z= 467.29585-467.30053 F:
 FTMS + p ESI Full ms [100.00-1500.00]
 MS Lcornutus

NL: 4.33E6
 Base Peak m/z= 234.15184-234.15418 F:
 FTMS + p ESI Full ms [100.00-1500.00]
 MS Lcornutus

NL: 7.48E5
 Base Peak m/z= 50.00000-1500.00000 F:
 FTMS + p ESI d Full ms2
 234.15@hcd35.00 [50.00-495.00] MS
 Lcornutus

Lcornutus#1194-1200 RT: 2.99-3.00 AV:
 F: FTMS + p ESI d Full ms2 234.15 ...
 m/z= 50.00000-1000.00000

m/z	Intensity	Relative
56.67544	1345.8	1.66
58.06598	3247.7	4.01
66.69841	1495.1	1.85
70.02956	1351.6	1.67
72.08145	3369.0	4.16
73.59233	1230.8	1.52
79.49630	1272.4	1.57
84.08130	5261.4	6.50
85.07646	1206.2	1.49
85.08930	3323.7	4.11
87.05584	20971.1	25.92
88.03984	9373.1	11.58
93.60238	5442.6	6.73
94.06042	1349.0	1.67
100.03658	1225.2	1.51
101.39248	1260.0	1.56
101.78938	1482.4	1.83
112.11229	46387.6	57.33
115.05081	8480.5	10.48
115.44440	1260.3	1.56
116.03415	1334.2	1.65
119.58083	1835.7	2.27
121.10554	1294.1	1.60
123.04414	80917.5	100.00
124.99092	1403.3	1.73
129.13855	62447.1	77.17
129.61849	2114.6	2.61
133.59704	16748.8	20.70
138.05505	4926.1	6.09
142.11016	14431.1	17.83
151.03820	2379.8	2.94
154.41074	1668.9	2.06
155.08176	5111.9	6.32
164.94673	1358.1	1.68
170.83300	1436.2	1.77
172.10651	1619.6	2.00
178.13293	1608.8	1.99
203.22305	4458.0	5.51
226.15542	17671.2	21.84
243.18225	5024.0	6.21
278.85474	1513.0	1.87
300.23829	1671.1	2.07
334.53681	1494.1	1.85
341.46373	1526.5	1.89
379.23041	1877.6	2.32
393.66183	1666.2	2.06



NL: 5.41E6
 Lcornutus#1189 RT: 2.98
 AV: 1 T: FTMS + p ESI
 Full lock ms
 [100.00-1500.00]

NL: 7.97E4
 Lcornutus#1188-1201 RT:
 2.99-3.00 AV: 2 F: FTMS
 + p ESI d Full ms2
 234.15@hcd35.00
 [50.00-495.00]