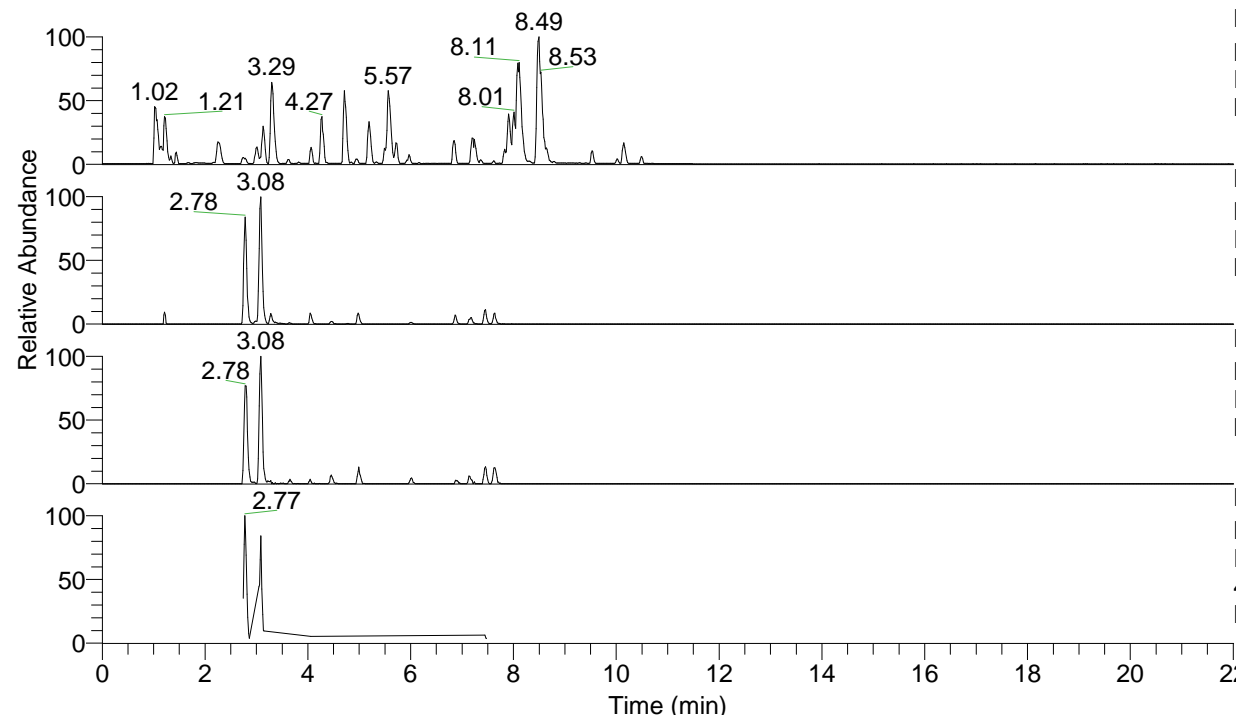


RT: 0.00 - 22.01



NL: 6.76E7
 Base Peak m/z= 100.00000-1500.00000 F:
 FTMS + p ESI Full ms [100.00-1500.00]
 MS Lcornutus

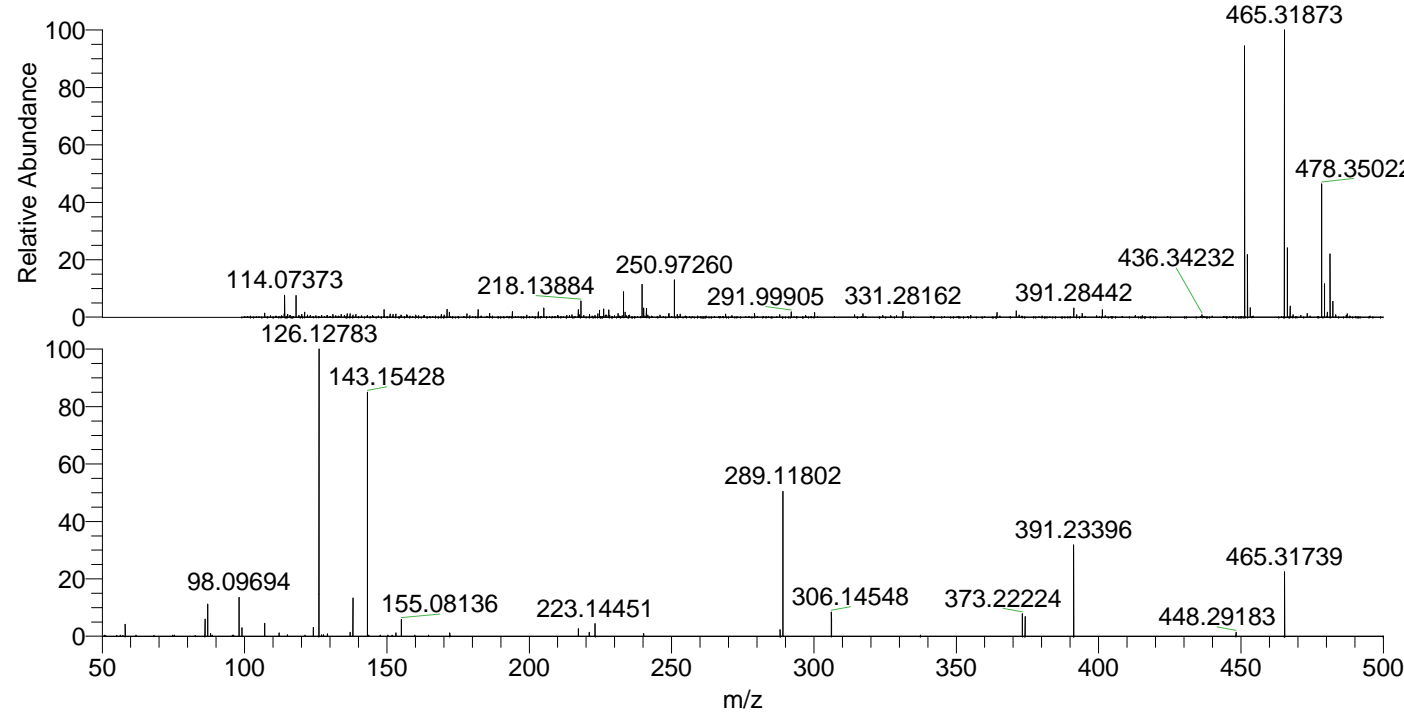
NL: 3.92E6
 Base Peak m/z= 465.31660-465.32126 F:
 FTMS + p ESI Full ms [100.00-1500.00]
 MS Lcornutus

NL: 3.52E5
 Base Peak m/z= 233.16221-233.16455 F:
 FTMS + p ESI Full ms [100.00-1500.00]
 MS Lcornutus

NL: 5.65E5
 Base Peak m/z= 50.00000-1500.00000 F:
 FTMS + p ESI d Full ms2
 465.32@hcd35.00 [50.00-495.00] MS
 Lcornutus

Lcornutus#1222-1232 RT: 3.06-3.09 AV:
 F: FTMS + p ESI d Full ms2 465.32 ...
 m/z= 50.00000-1000.00000

m/z	Intensity	Relative
58.06592	14737.1	4.18
86.09717	21465.8	6.09
87.05589	39533.2	11.21
88.03998	3265.9	0.93
98.09694	49174.7	13.95
99.05581	10510.8	2.98
107.04965	15967.9	4.53
112.11262	3982.7	1.13
124.11228	10693.8	3.03
126.12783	352553.3	100.00
129.13879	3180.1	0.90
137.07103	5203.9	1.48
138.05502	47951.9	13.60
143.15428	299474.4	84.94
153.13871	4106.2	1.16
155.08136	21209.0	6.02
172.10867	4111.8	1.17
217.23914	9239.4	2.62
221.09102	4907.7	1.39
223.14451	15895.9	4.51
240.17106	3299.0	0.94
288.13461	8123.6	2.30
289.11802	181216.1	51.40
306.14548	30123.5	8.54
373.22224	27753.9	7.87
374.20681	24456.8	6.94
391.23396	113060.6	32.07
448.29183	4893.7	1.39
465.31739	80306.5	22.78



NL: 3.92E6
 Lcornutus#1231 RT: 3.08
 AV: 1 T: FTMS + p ESI
 Full lock ms
 [100.00-1500.00]

NL: 3.52E5
 Lcornutus#1222-1237 RT:
 3.06-3.09 AV: 3 F: FTMS
 + p ESI d Full ms2
 465.32@hcd35.00
 [50.00-495.00]