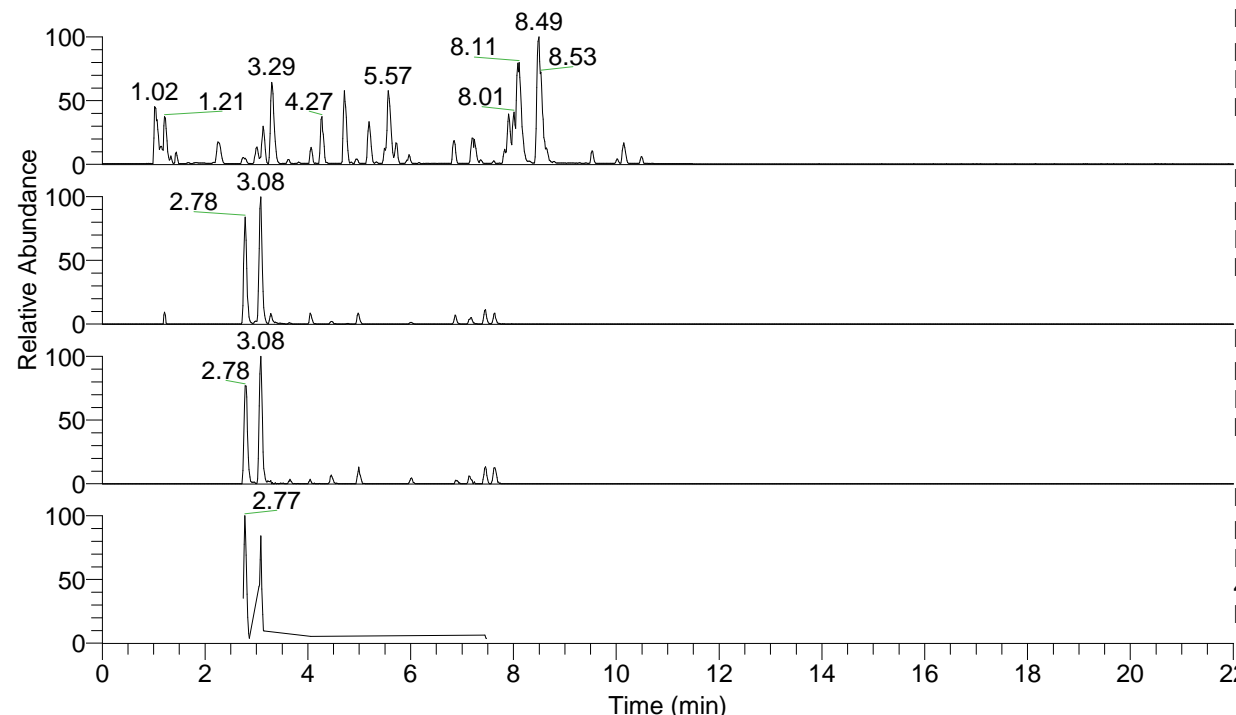


RT: 0.00 - 22.01



NL: 6.76E7
 Base Peak m/z= 100.00000-1500.00000 F:
 FTMS + p ESI Full ms [100.00-1500.00]
 MS Lcornutus

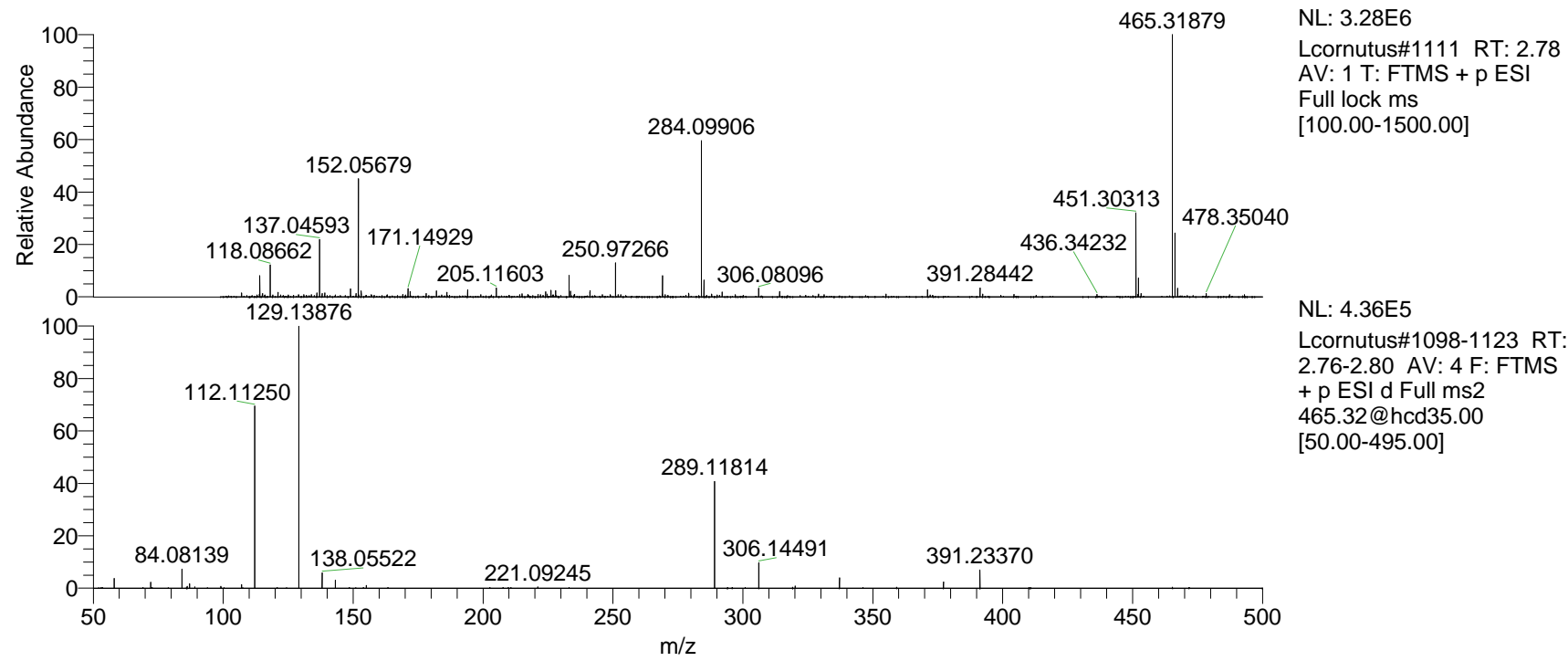
NL: 3.92E6
 Base Peak m/z= 465.31660-465.32126 F:
 FTMS + p ESI Full ms [100.00-1500.00]
 MS Lcornutus

NL: 3.52E5
 Base Peak m/z= 233.16221-233.16455 F:
 FTMS + p ESI Full ms [100.00-1500.00]
 MS Lcornutus

NL: 5.65E5
 Base Peak m/z= 50.00000-1500.00000 F:
 FTMS + p ESI d Full ms2
 465.32@hcd35.00 [50.00-495.00] MS
 Lcornutus

Lcornutus#1103-1118 RT: 2.76-2.80 AV:
 F: FTMS + p ESI d Full ms2 465.32 ...
 m/z= 50.00000-1000.00000

m/z	Intensity	Relative
58.06596	16163.5	3.62
72.08151	10267.2	2.30
84.08139	32060.2	7.17
86.09698	3160.6	0.71
87.05600	7657.5	1.71
99.05588	3288.9	0.74
107.04952	6191.1	1.38
112.11250	306268.9	68.50
129.13876	447078.9	100.00
138.05522	26600.2	5.95
143.15464	13354.2	2.99
155.08168	4916.9	1.10
221.09245	2250.3	0.50
289.11814	181503.2	40.60
306.14491	43988.2	9.84
320.15947	3590.2	0.80
337.18730	17406.5	3.89
377.21815	10476.7	2.34
391.23370	30684.2	6.86



NL: 3.28E6
 Lcornutus#1111 RT: 2.78
 AV: 1 T: FTMS + p ESI
 Full lock ms
 [100.00-1500.00]

NL: 4.36E5
 Lcornutus#1098-1123 RT:
 2.76-2.80 AV: 4 F: FTMS
 + p ESI d Full ms2
 465.32@hcd35.00
 [50.00-495.00]