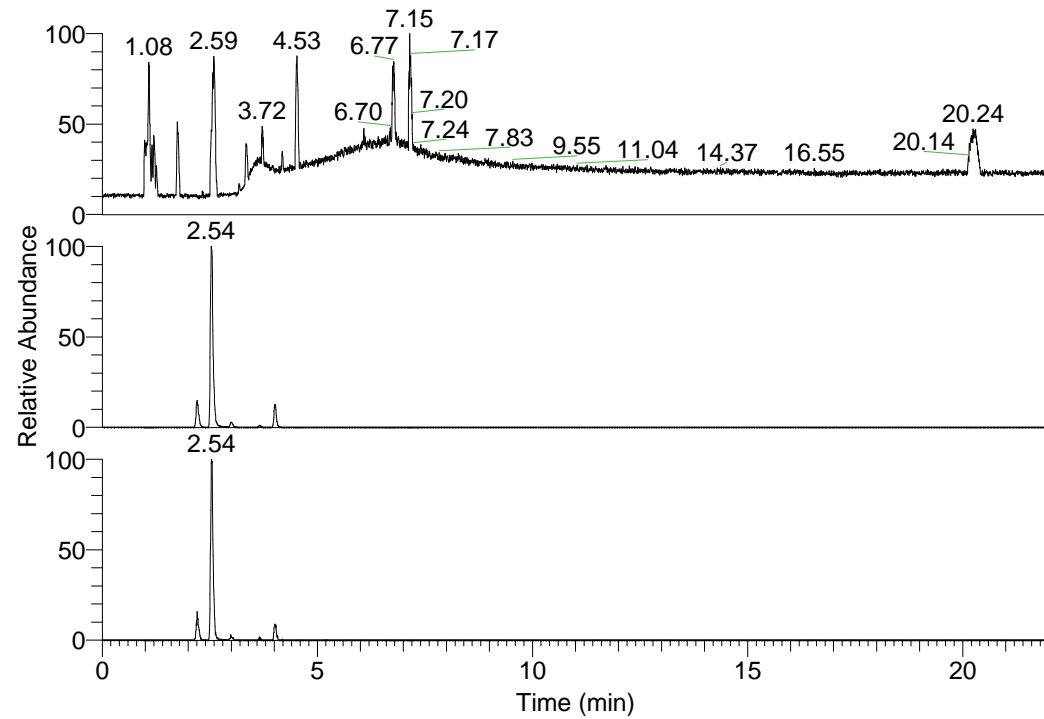


RT: 0.00 - 22.01



NL: 6.93E7
Base Peak m/z=
100.00000-1500.00000 F:
FTMS + p ESI Full ms
[100.00-1500.00] MS
Lcornutus_HDX

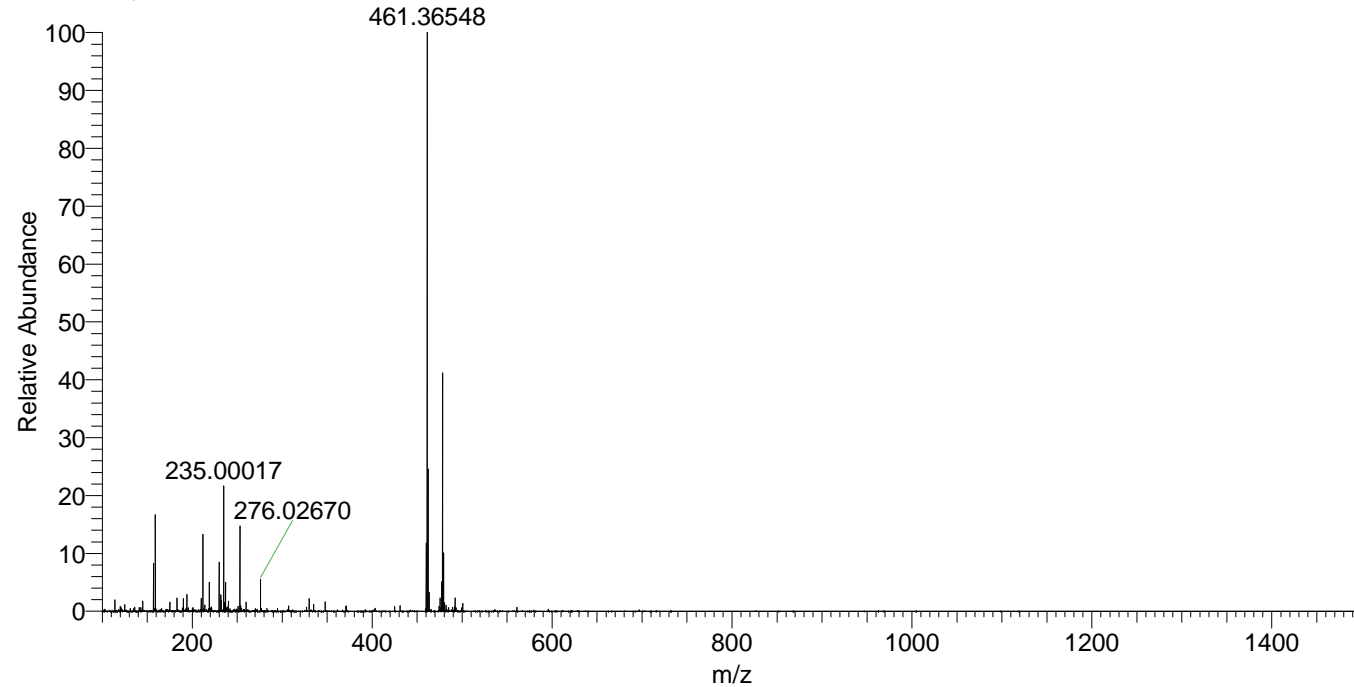
Lcornutus_HDX#390 RT: 2.54
T: FTMS + p ESI Full ms [100.00-1500.00]
m/z= 461.00000-462.00000

m/z	Intensity	Relative	Delta (ppm)	Composition
461.36548	32039450.0	100.00	-0.04	C ₂₂ H ₂₉ ² H ₁₀ O ₄ N ₆
			3.31	C ₂₂ H ₂₇ ² H ₁₁ O ₄ N ₆
			-3.40	C ₂₂ H ₃₁ ² H ₉ O ₄ N ₆

NL: 3.24E7
Base Peak m/z=
461.36374-461.36836 F:
FTMS + p ESI Full ms
[100.00-1500.00] MS
Lcornutus_HDX

NL: 9.45E5
Base Peak m/z=
231.68892-231.69124 F:
FTMS + p ESI Full ms
[100.00-1500.00] MS
Lcornutus_HDX

Lcornutus_HDX #389 RT: 2.54 AV: 1 NL: 3.21E7
T: FTMS + p ESI Full ms [100.00-1500.00]



Lcornutus_HDX #390 RT: 2.54 AV: 1 NL: 3.19E7
T: FTMS + p ESI Full ms [100.00-1500.00]

