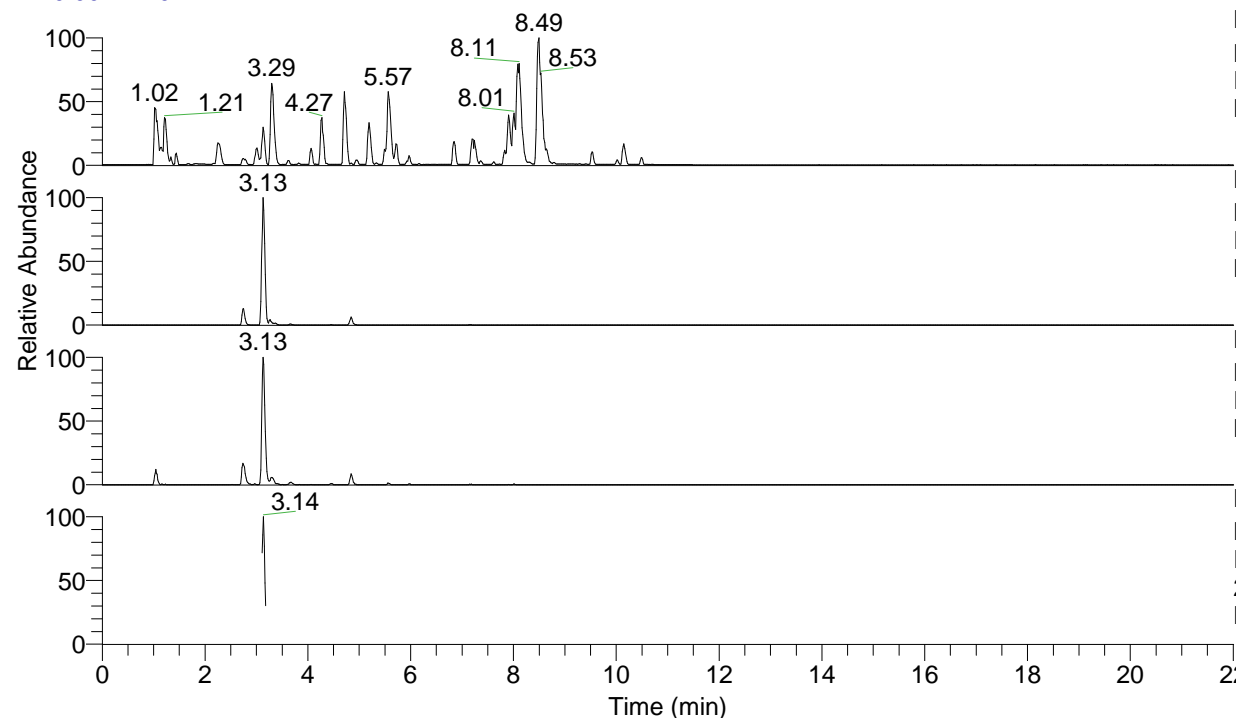


RT: 0.00 - 22.01



NL: 6.76E7
 Base Peak m/z= 100.00000-1500.00000 F:
 FTMS + p ESI Full ms [100.00-1500.00]
 MS Lcornutus

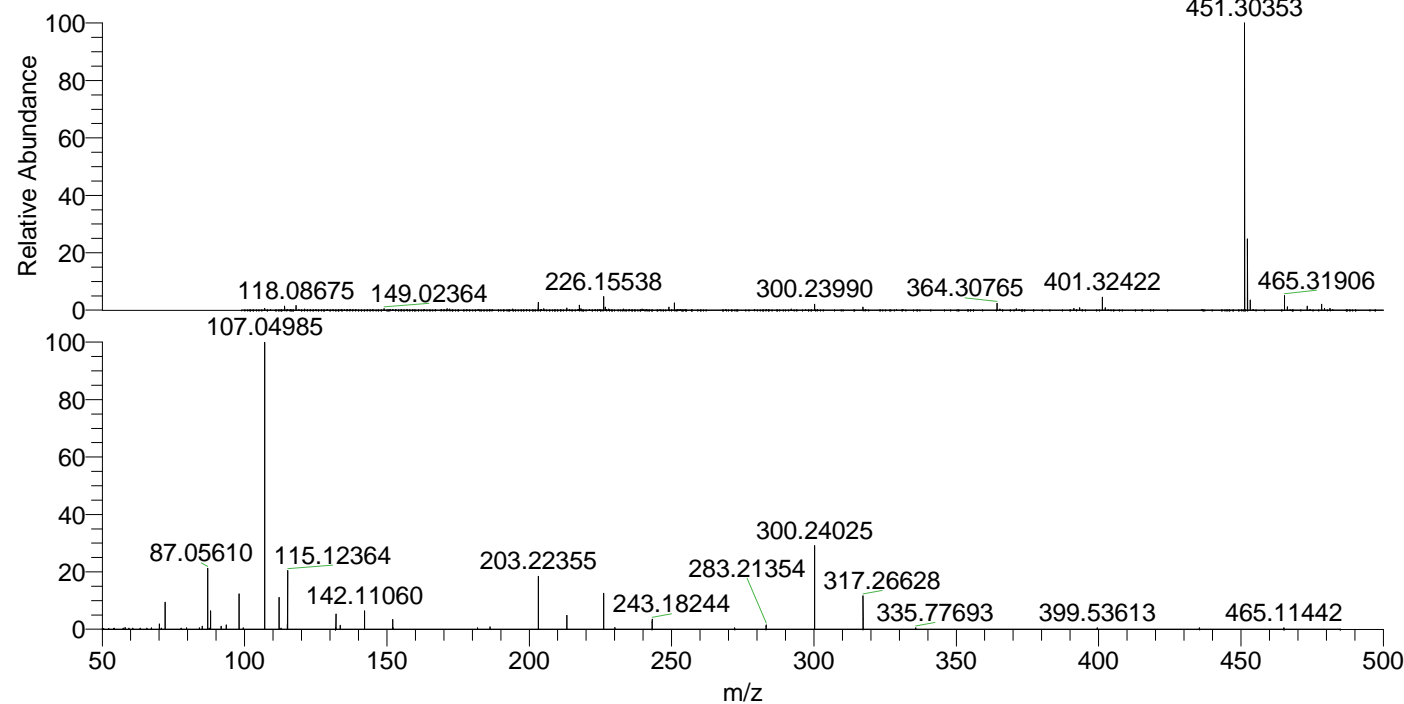
NL: 2.02E7
 Base Peak m/z= 451.30102-451.30554 F:
 FTMS + p ESI Full ms [100.00-1500.00]
 MS Lcornutus

NL: 9.58E5
 Base Peak m/z= 226.15442-226.15668 F:
 FTMS + p ESI Full ms [100.00-1500.00]
 MS Lcornutus

NL: 2.55E5
 Base Peak m/z= 50.00000-1500.00000 F:
 FTMS + p ESI d Full ms2
 226.15@hcd35.00 [50.00-480.00] MS
 Lcornutus

Lcornutus#1242-1258 RT: 3.11-3.15 AV:
 F: FTMS + p ESI d Full ms2 226.15 ...
 m/z= 50.00000-1000.00000

m/z	Intensity	Relative
70.02952	3569.9	1.79
72.08171	16451.1	8.24
85.08976	1805.0	0.90
87.05605	41960.5	21.01
88.04011	11636.4	5.83
91.75833	1662.8	0.83
93.60251	3473.6	1.74
98.09716	23688.2	11.86
107.04980	199724.7	100.00
112.11270	20996.3	10.51
115.05087	2892.6	1.45
115.12361	39584.0	19.82
132.15000	9920.6	4.97
133.59738	2875.2	1.44
142.11047	12808.4	6.41
142.13436	3330.8	1.67
152.07125	7090.2	3.55
186.19672	2341.3	1.17
203.22348	36559.1	18.30
213.20794	8656.0	4.33
226.15528	24575.7	12.30
243.18224	6568.0	3.29
283.21354	2448.2	1.23
300.24016	60507.7	30.30
317.26631	22798.2	11.41



NL: 2.02E7
 Lcornutus#1249 RT: 3.13
 AV: 1 T: FTMS + p ESI
 Full lock ms
 [100.00-1500.00]

NL: 2.10E5
 Lcornutus#1243-1261 RT:
 3.12-3.15 AV: 3 F: FTMS
 + p ESI d Full ms2
 226.15@hcd35.00
 [50.00-480.00]