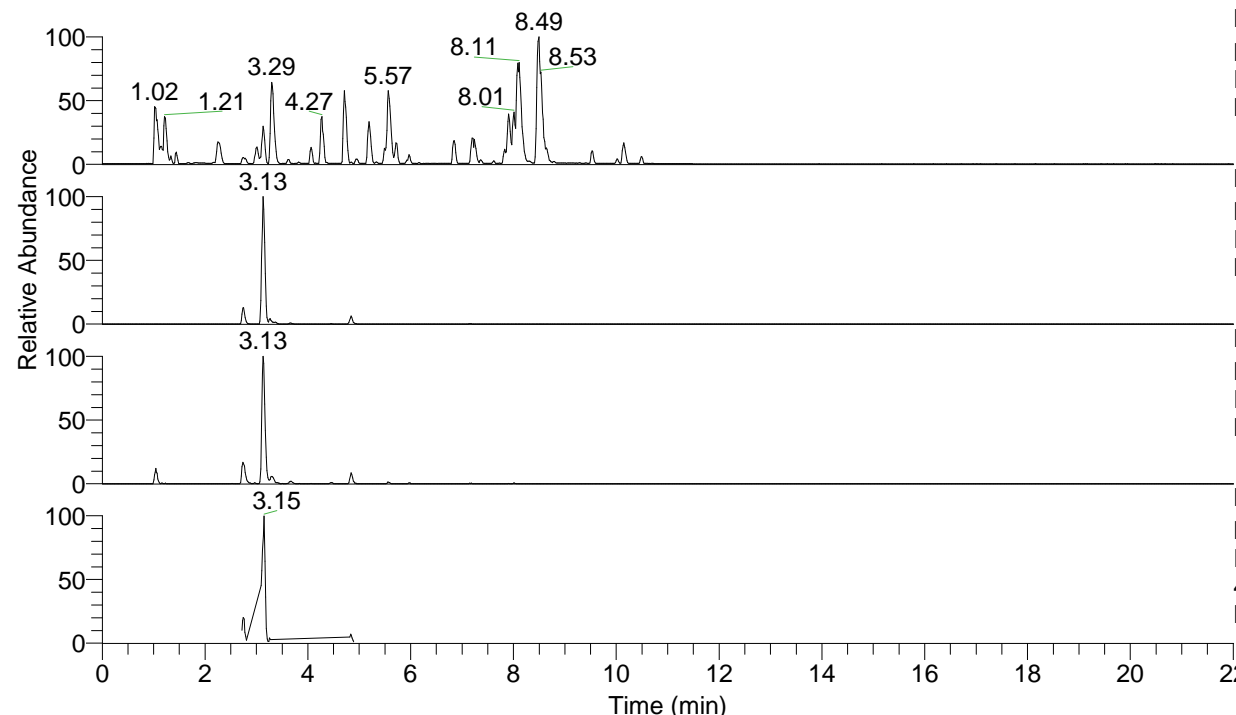


RT: 0.00 - 22.01



NL: 6.76E7
 Base Peak m/z= 100.00000-1500.00000 F:
 FTMS + p ESI Full ms [100.00-1500.00]
 MS Lcornutus

NL: 2.02E7
 Base Peak m/z= 451.30102-451.30554 F:
 FTMS + p ESI Full ms [100.00-1500.00]
 MS Lcornutus

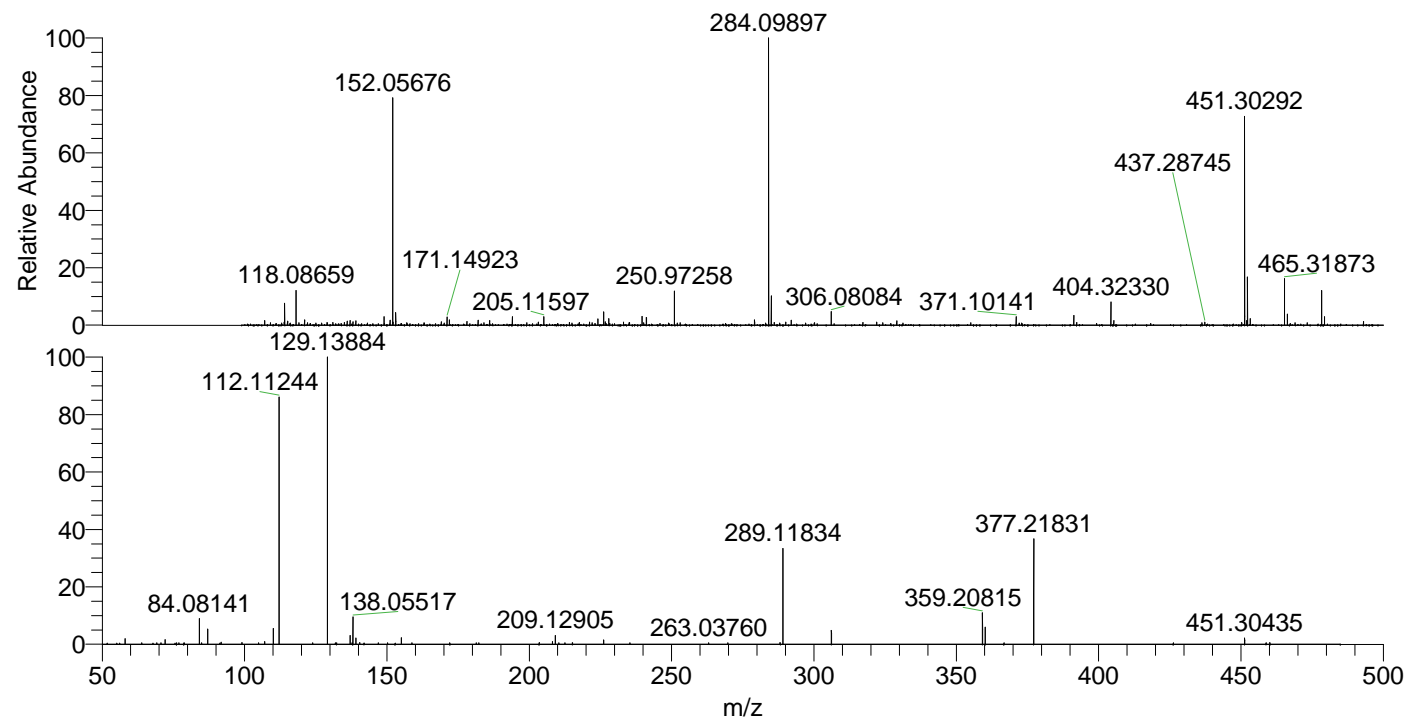
NL: 9.58E5
 Base Peak m/z= 226.15442-226.15668 F:
 FTMS + p ESI Full ms [100.00-1500.00]
 MS Lcornutus

NL: 1.59E6
 Base Peak m/z= 50.00000-1500.00000 F:
 FTMS + p ESI d Full ms2
 451.30@hcd35.00 [50.00-480.00] MS
 Lcornutus

Lcornutus#1090-1102 RT: 2.73-2.76 AV:

F: FTMS + p ESI d Full ms2 451.30 ...
 m/z= 50.00000-1000.00000

m/z	Intensity	Relative
58.06600	5472.2	1.95
72.08149	4424.8	1.58
84.08141	25430.5	9.06
87.05593	14996.8	5.34
91.75763	2120.3	0.76
99.05600	1727.0	0.62
107.04974	2632.0	0.94
110.09697	15336.6	5.47
112.11244	238181.7	84.89
123.97834	1533.2	0.55
129.13884	280589.1	100.00
132.31093	1512.1	0.54
137.07103	8691.5	3.10
138.05517	26829.6	9.56
139.12342	5896.6	2.10
140.50204	1560.1	0.56
155.08164	6415.0	2.29
158.78132	1482.3	0.53
181.36426	1412.1	0.50
203.49732	1577.0	0.56
208.14486	2680.0	0.96
209.12905	8604.6	3.07
210.42493	1485.5	0.53
212.53840	1487.2	0.53
226.15562	4308.9	1.54
263.03760	1512.6	0.54
269.75753	1459.5	0.52
288.12997	1617.9	0.58
289.11834	94236.6	33.59
306.14519	13306.6	4.74
359.20815	30386.6	10.83
360.19133	16373.9	5.84
366.77718	1502.9	0.54
377.21831	101683.5	36.24
426.26132	1492.9	0.53
451.30435	6089.2	2.17
458.85233	1549.5	0.55
460.17570	1651.4	0.59



NL: 3.50E6
 Lcornutus#1093 RT: 2.74
 AV: 1 T: FTMS + p ESI
 Full lock ms
 [100.00-1500.00]

NL: 2.76E5
 Lcornutus#1090-1104 RT:
 2.73-2.76 AV: 3 F: FTMS
 + p ESI d Full ms2
 451.30@hcd35.00
 [50.00-480.00]