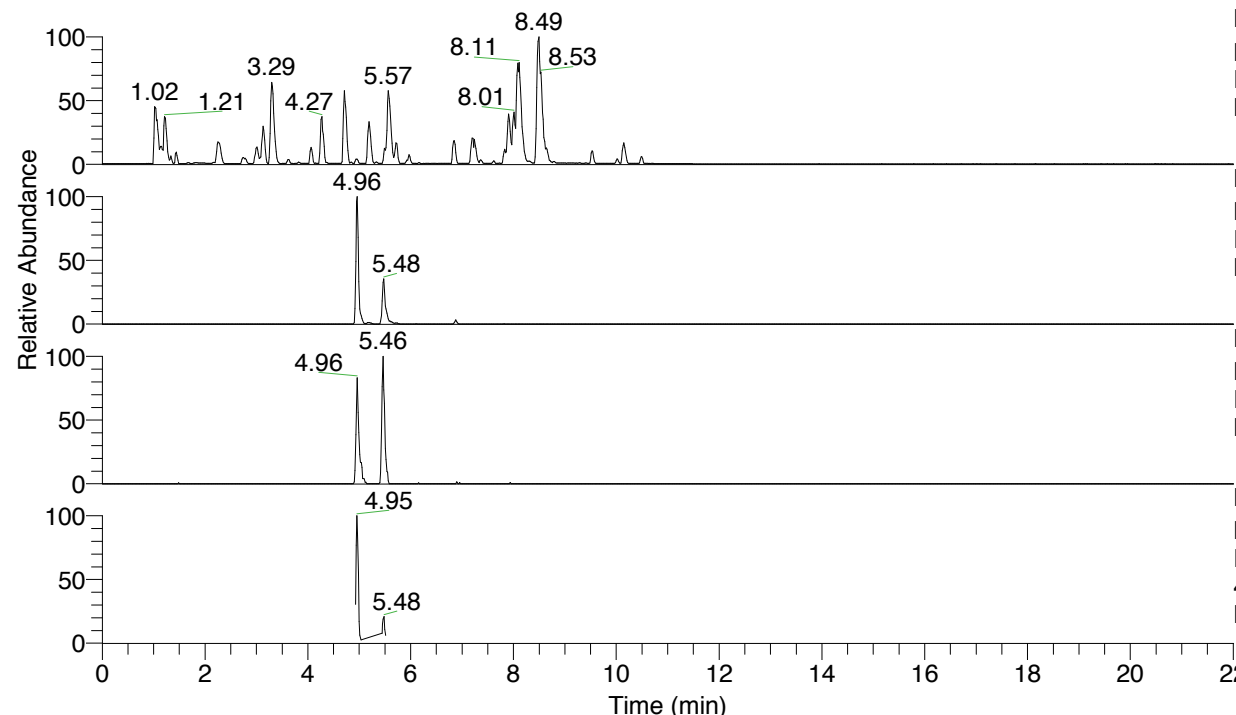


RT: 0.00 - 22.01



NL: 6.76E7
 Base Peak m/z= 100.00000-1500.00000 F:
 FTMS + p ESI Full ms [100.00-1500.00]
 MS Lcornutus

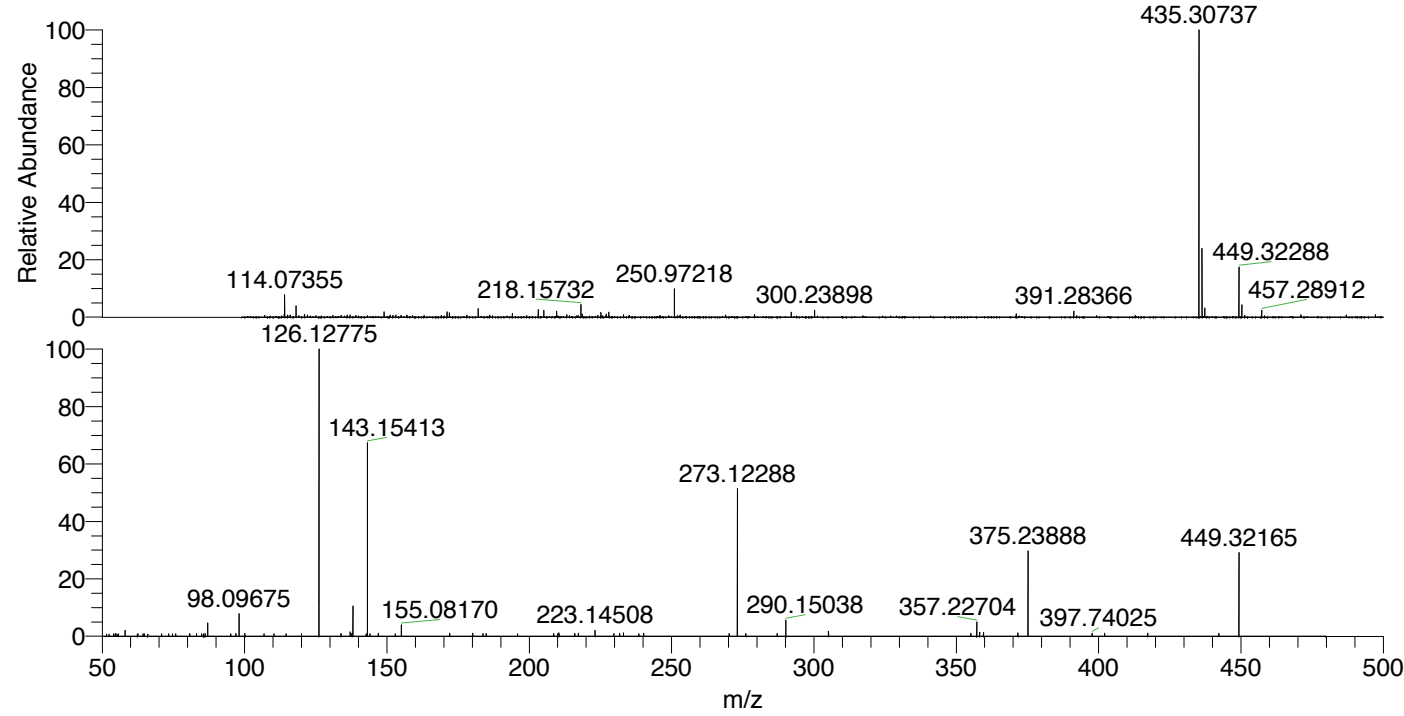
NL: 2.84E6
 Base Peak m/z= 449.32176-449.32626 F:
 FTMS + p ESI Full ms [100.00-1500.00]
 MS Lcornutus

NL: 1.23E5
 Base Peak m/z= 225.16479-225.16705 F:
 FTMS + p ESI Full ms [100.00-1500.00]
 MS Lcornutus

NL: 6.15E5
 Base Peak m/z= 50.00000-1500.00000 F:
 FTMS + p ESI d Full ms2
 449.32@hcd35.00 [50.00-475.00] MS
 Lcornutus

Lcornutus#2172-2193 RT: 5.44-5.50 AV:
 F: FTMS + p ESI d Full ms2 449.32 ...
 m/z= 50.00000-1000.00000

m/z	Intensity	Relative
54.81965	816.0	0.96
58.06595	1729.2	2.03
70.83572	756.6	0.89
80.80559	804.2	0.94
83.16579	830.9	0.97
86.09701	825.2	0.97
87.05596	4018.6	4.71
96.89706	802.2	0.94
98.09675	6858.1	8.04
100.14549	767.5	0.90
106.85298	753.3	0.88
110.36710	761.5	0.89
120.03340	750.7	0.88
126.12775	85282.0	100.00
126.18472	780.7	0.92
133.88189	811.9	0.95
137.07058	1257.3	1.47
137.69874	804.0	0.94
138.05503	9194.9	10.78
143.15413	57187.4	67.06
144.09681	769.8	0.90
146.99620	891.4	1.05
155.08170	3363.1	3.94
172.07213	885.8	1.04
180.13278	861.3	1.01
183.73037	796.3	0.93
184.83513	833.8	0.98
195.88253	745.0	0.87
208.59687	846.5	0.99
209.94988	767.2	0.90
210.45161	957.5	1.12
215.93309	797.8	0.94
217.23831	933.8	1.10
223.14508	1783.0	2.09
229.76379	778.2	0.91
231.75478	784.2	0.92
233.09216	968.4	1.14
240.16714	916.7	1.07
270.22445	812.8	0.95
273.12288	44958.5	52.72
276.10626	863.8	1.01
287.06192	794.7	0.93
290.15038	4800.2	5.63
305.12329	1435.5	1.68
355.13061	859.5	1.01
357.22704	4216.3	4.94
358.21012	1134.6	1.33
359.57316	1110.1	1.30
371.66697	962.9	1.13
375.23888	25142.5	29.48
397.74025	873.8	1.02
402.11655	862.8	1.01
417.24970	873.2	1.02
442.25156	901.6	1.06
449.32165	24657.0	28.91



NL: 5.46E6
 Lcornutus#2185 RT: 5.48
 AV: 1 T: FTMS + p ESI
 Full lock ms
 [100.00-1500.00]

NL: 8.45E4
 Lcornutus#2171-2195 RT:
 5.44-5.50 AV: 5 F: FTMS
 + p ESI d Full ms2
 449.32@hcd35.00
 [50.00-475.00]

Lcornutus#2172-2193 RT: 5.44-5.50 AV: 5

F: FTMS + p ESI d Full ms2 449.32@hcd35.00 [50.00-475.00]

m/z= 50.00000-1000.00000

m/z	Intensity	Relative
51.49431	579.5	0.68
52.46446	631.6	0.74
54.03835	664.2	0.78
54.58582	694.5	0.81
54.81965	816.0	0.96
55.19776	556.7	0.65
55.69115	696.4	0.82
58.06595	1729.2	2.03
62.36846	630.2	0.74
62.56930	737.5	0.86
64.31910	662.6	0.78
64.82691	682.7	0.80
65.96977	655.0	0.77
70.83572	756.6	0.89
73.35574	679.0	0.80
74.68720	681.8	0.80
75.81368	692.5	0.81
80.80559	804.2	0.94
83.16579	830.9	0.97
84.91951	744.1	0.87
85.53608	724.6	0.85
86.09701	825.2	0.97
87.05596	4018.6	4.71
95.11311	681.2	0.80
96.89706	802.2	0.94
98.09675	6858.1	8.04
100.14549	767.5	0.90
106.85298	753.3	0.88
110.36710	761.5	0.89
114.63954	694.1	0.81
120.03340	750.7	0.88
126.12775	85282.0	100.00
126.18472	780.7	0.92
133.88189	811.9	0.95
137.07058	1257.3	1.47
137.69874	804.0	0.94
138.05503	9194.9	10.78
142.71199	714.4	0.84
143.15413	57187.4	67.06

Lcornutus#2172-2193 RT: 5.44-5.50 AV: 5

F: FTMS + p ESI d Full ms2 449.32@hcd35.00 [50.00-475.00]

m/z= 50.00000-1000.00000

m/z	Intensity	Relative
144.09681	769.8	0.90
146.99620	891.4	1.05
152.97023	723.8	0.85
155.08170	3363.1	3.94
172.07213	885.8	1.04
180.13278	861.3	1.01
183.73037	796.3	0.93
184.83513	833.8	0.98
195.88253	745.0	0.87
208.59687	846.5	0.99
209.94988	767.2	0.90
210.45161	957.5	1.12
215.93309	797.8	0.94
216.04705	738.1	0.87
217.23831	933.8	1.10
223.14508	1783.0	2.09
229.76379	778.2	0.91
231.75478	784.2	0.92
233.09216	968.4	1.14
238.54776	739.6	0.87
240.16714	916.7	1.07
270.22445	812.8	0.95
273.12288	44958.5	52.72
276.10626	863.8	1.01
287.06192	794.7	0.93
290.15038	4800.2	5.63
305.12329	1435.5	1.68
355.13061	859.5	1.01
357.22704	4216.3	4.94
358.21012	1134.6	1.33
359.57316	1110.1	1.30
371.66697	962.9	1.13
375.23888	25142.5	29.48
397.74025	873.8	1.02
402.11655	862.8	1.01
417.24970	873.2	1.02
442.25156	901.6	1.06
449.32165	24657.0	28.91