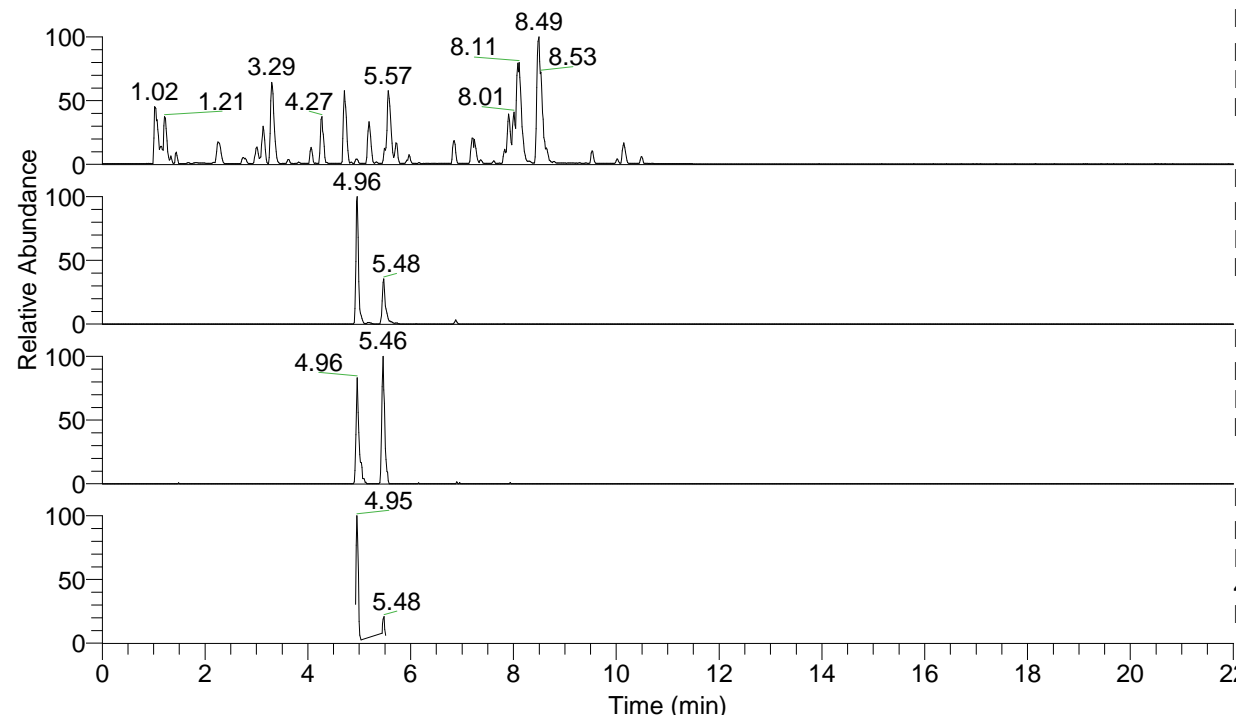


RT: 0.00 - 22.01



NL: 6.76E7
 Base Peak m/z= 100.00000-1500.00000 F:
 FTMS + p ESI Full ms [100.00-1500.00]
 MS Lcornutus

NL: 2.84E6
 Base Peak m/z= 449.32176-449.32626 F:
 FTMS + p ESI Full ms [100.00-1500.00]
 MS Lcornutus

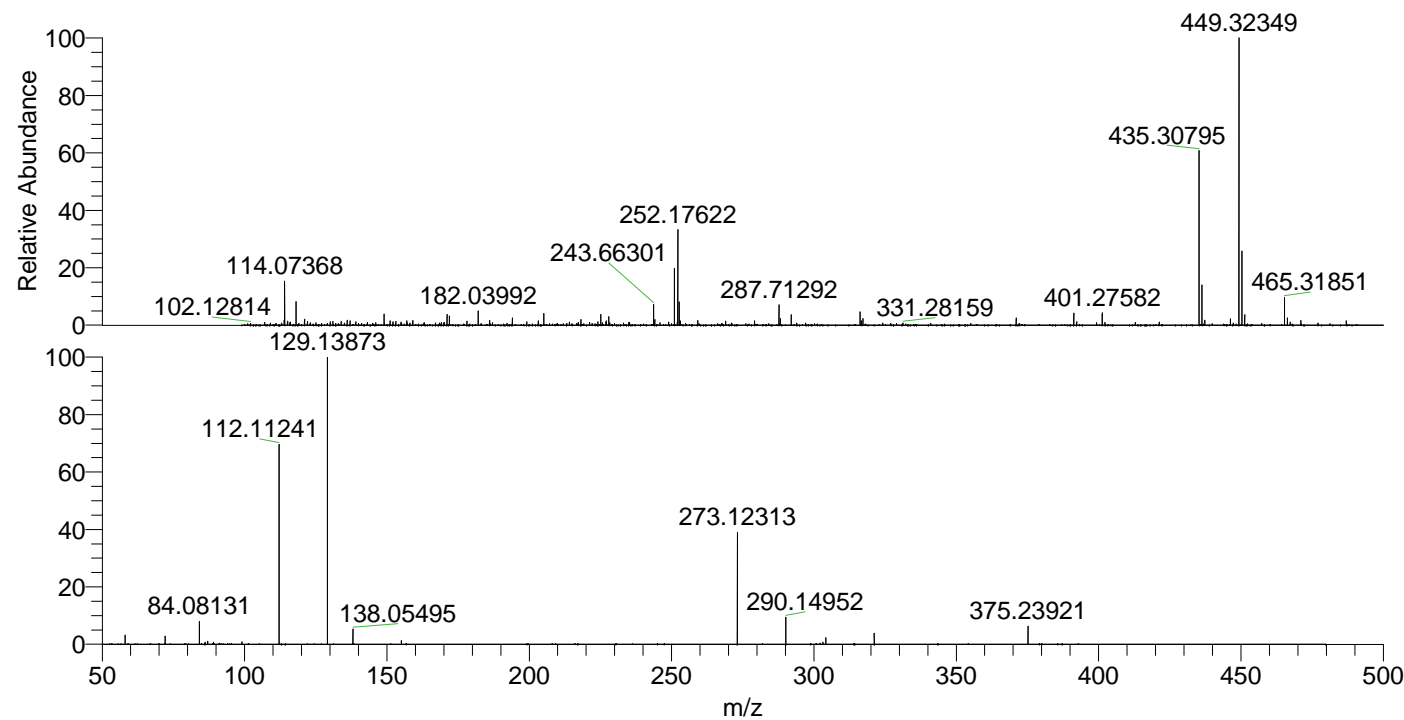
NL: 1.23E5
 Base Peak m/z= 225.16479-225.16705 F:
 FTMS + p ESI Full ms [100.00-1500.00]
 MS Lcornutus

NL: 6.15E5
 Base Peak m/z= 50.00000-1500.00000 F:
 FTMS + p ESI d Full ms2
 449.32@hcd35.00 [50.00-475.00] MS
 Lcornutus

Lcornutus#1968-1988 RT: 4.93-4.98 AV:

F: FTMS + p ESI d Full ms2 449.32 ...
 m/z= 50.00000-1000.00000

m/z	Intensity	Relative
58.06591	12104.1	3.04
72.08152	11301.7	2.84
84.08131	30721.9	7.72
86.09716	2977.8	0.75
87.05590	4034.2	1.01
89.10801	2938.1	0.74
99.05605	3066.5	0.77
112.11241	268687.9	67.51
129.13873	397998.0	100.00
138.05495	21079.8	5.30
155.08168	5124.5	1.29
273.12313	155179.1	38.99
290.14952	36262.6	9.11
303.18048	2779.3	0.70
304.16501	8894.6	2.23
321.19172	14924.7	3.75
375.23921	24186.5	6.08



NL: 2.70E6
 Lcornutus#1981 RT: 4.96
 AV: 1 T: FTMS + p ESI
 Full lock ms
 [100.00-1500.00]

NL: 3.84E5
 Lcornutus#1965-1992 RT:
 4.93-4.98 AV: 5 F: FTMS
 + p ESI d Full ms2
 449.32@hcd35.00
 [50.00-475.00]