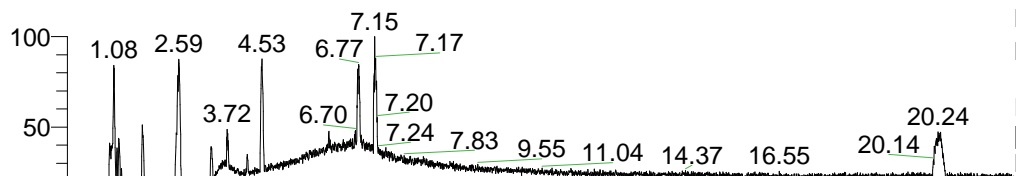


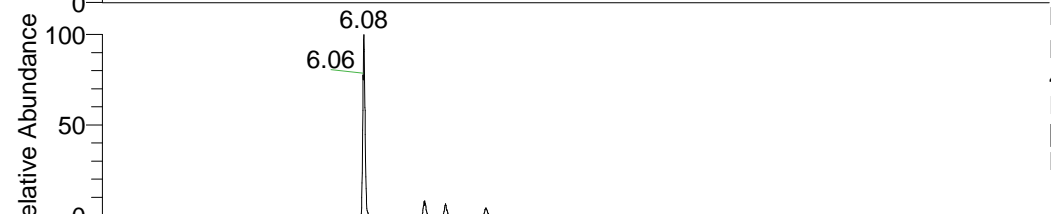
RT: 0.00 - 22.01



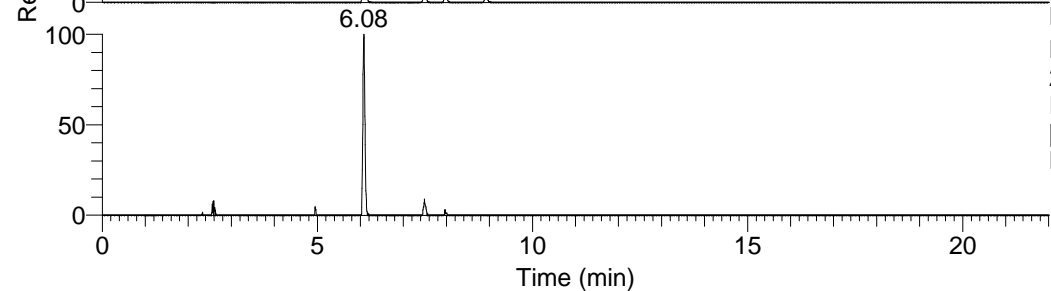
NL: 6.93E7
 Base Peak m/z=
 100.00000-1500.00000 F:
 FTMS + p ESI Full ms
 [100.00-1500.00] MS
 Lcornutus_HDX

Lcornutus_HDX#961 RT: 6.08
 T: FTMS + p ESI Full ms [100.00-1500.00]
 m/z= 457.00000-458.00000

m/z	Intensity	Relative	Delta (ppm)	Composition
457.33429	33063434.0	100.00	0.20	C ₂₂ H ₂₅ ² H ₁₀ O ₄ N ₆
			-3.18	C ₂₂ H ₂₇ ² H ₉ O ₄ N ₆

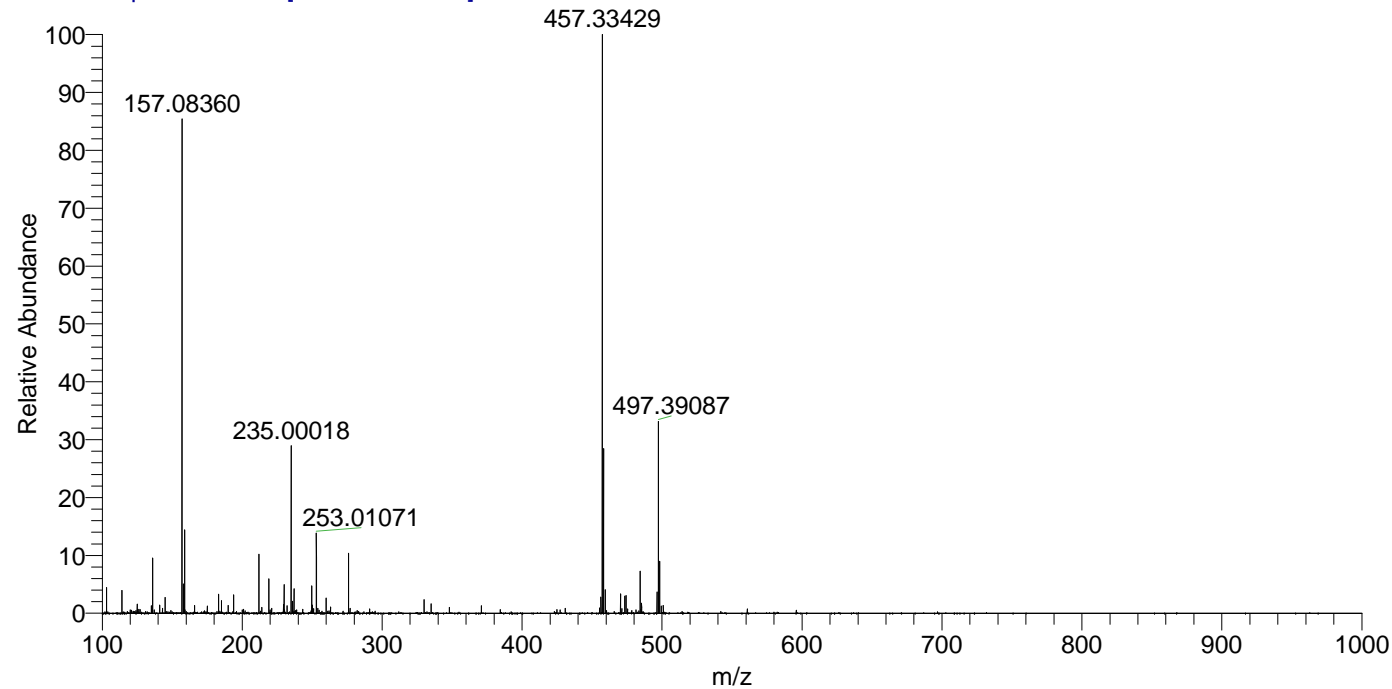


NL: 3.31E7
 Base Peak m/z=
 457.33245-457.33703 F:
 FTMS + p ESI Full ms
 [100.00-1500.00] MS
 Lcornutus_HDX



NL: 5.06E5
 Base Peak m/z=
 229.67327-229.67557 F:
 FTMS + p ESI Full ms
 [100.00-1500.00] MS
 Lcornutus_HDX

Lcornutus_HDX #961 RT: 6.08 AV: 1 NL: 3.19E7
 T: FTMS + p ESI Full ms [100.00-1500.00]



Lcornutus_HDX #961 RT: 6.08 AV: 1 NL: 3.19E7
 T: FTMS + p ESI Full ms [100.00-1500.00]

