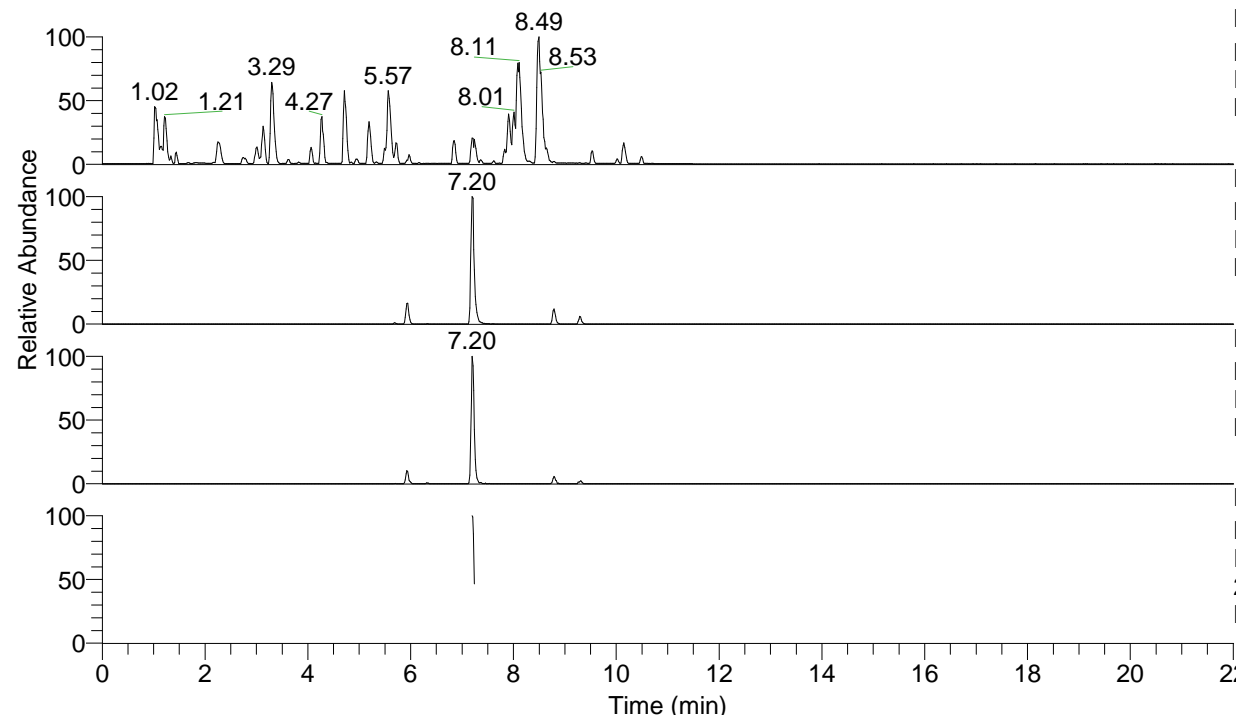


RT: 0.00 - 22.01



NL: 6.76E7
 Base Peak m/z= 100.00000-1500.00000 F:
 FTMS + p ESI Full ms [100.00-1500.00]
 MS Lcornutus

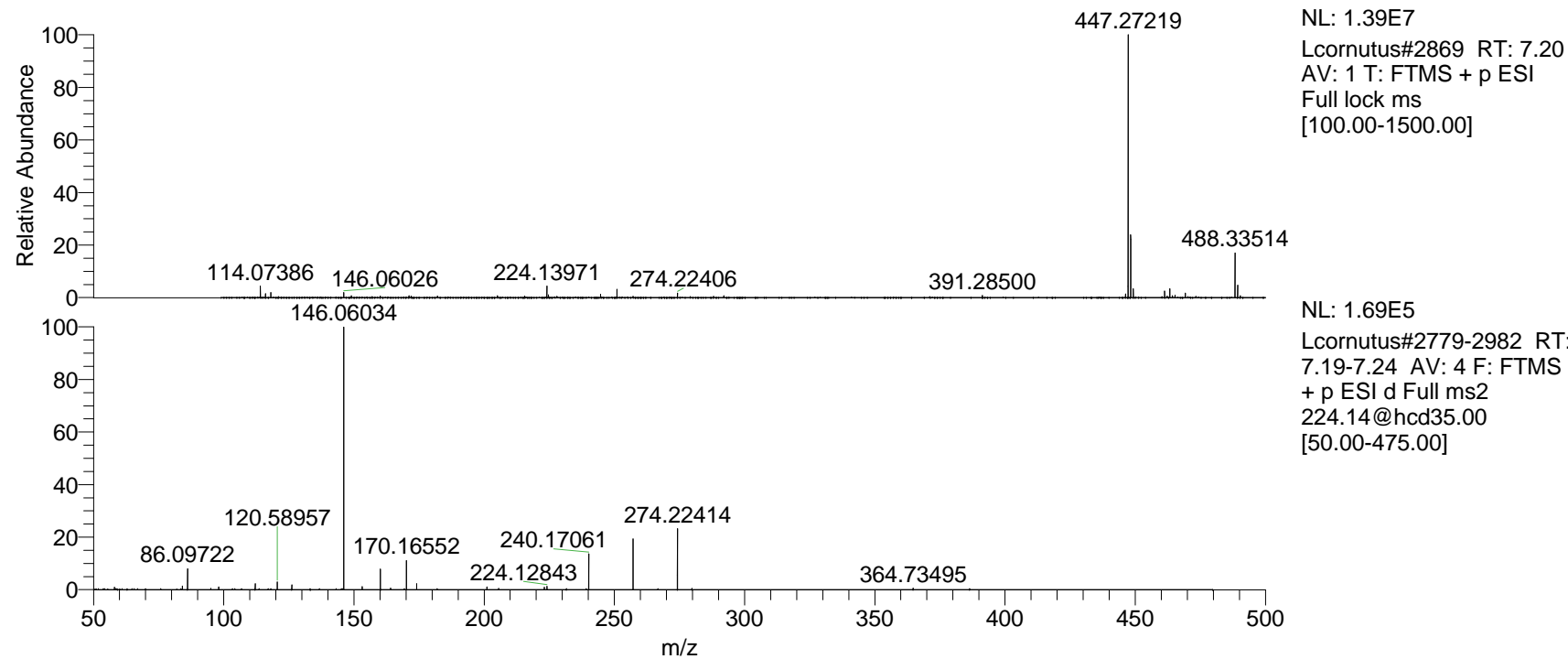
NL: 1.39E7
 Base Peak m/z= 447.26974-447.27422 F:
 FTMS + p ESI Full ms [100.00-1500.00]
 MS Lcornutus

NL: 6.20E5
 Base Peak m/z= 224.13878-224.14102 F:
 FTMS + p ESI Full ms [100.00-1500.00]
 MS Lcornutus

NL: 2.20E5
 Base Peak m/z= 50.00000-1500.00000 F:
 FTMS + p ESI d Full ms2
 224.14@hcd35.00 [50.00-475.00] MS
 Lcornutus

Lcornutus#2868-2886 RT: 7.19-7.24 AV:
 F: FTMS + p ESI d Full ms2 224.14 ...
 m/z= 50.00000-1000.00000

m/z	Intensity	Relative
58.06598	1653.0	0.97
84.08143	2428.3	1.42
86.09722	13851.4	8.09
95.05971	863.4	0.50
98.09718	1791.7	1.05
112.07611	4033.4	2.35
120.58957	5074.1	2.96
126.12831	3149.8	1.84
146.06034	171269.3	100.00
153.13915	1967.3	1.15
160.18116	13391.6	7.82
164.07147	1117.1	0.65
170.16552	18675.3	10.90
174.05536	3841.5	2.24
201.06698	1801.0	1.05
223.14380	1669.3	0.97
224.12843	2153.6	1.26
240.17061	23069.9	13.47
257.19716	32678.2	19.08
274.22414	39757.7	23.21



NL: 1.39E7
 Lcornutus#2869 RT: 7.20
 AV: 1 T: FTMS + p ESI
 Full lock ms
 [100.00-1500.00]

NL: 1.69E5
 Lcornutus#2779-2982 RT:
 7.19-7.24 AV: 4 F: FTMS
 + p ESI d Full ms2
 224.14@hcd35.00
 [50.00-475.00]