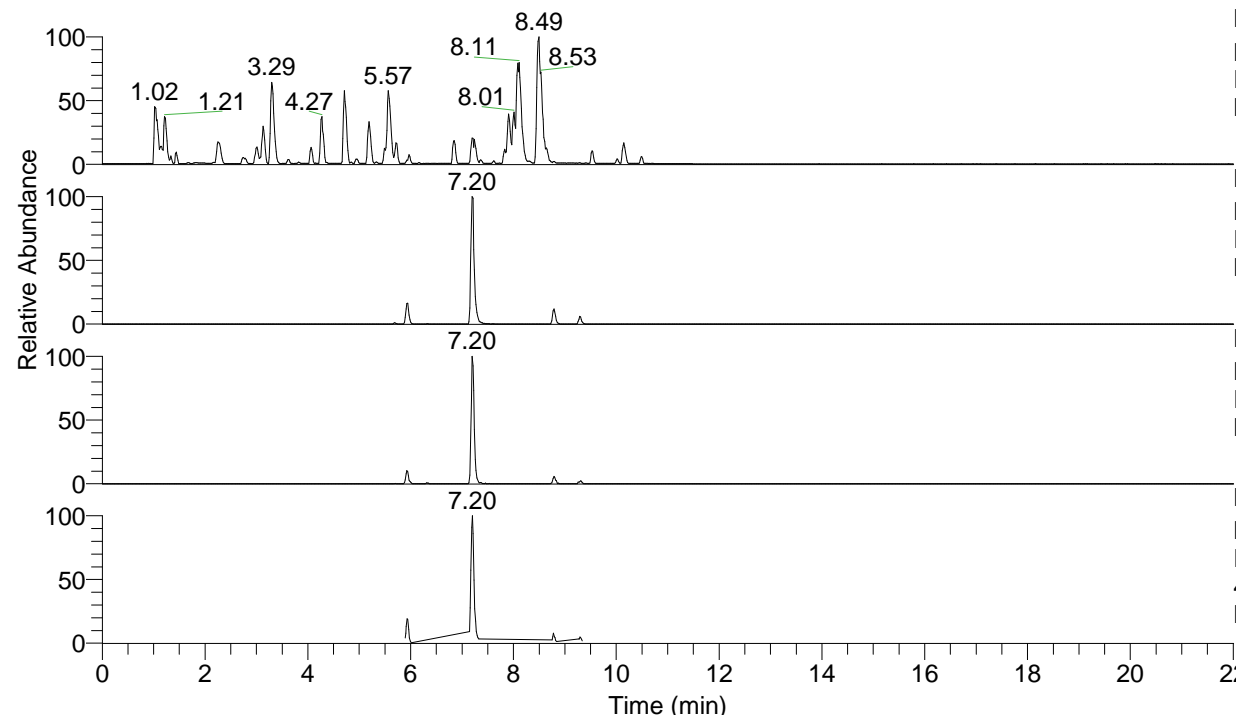


RT: 0.00 - 22.01



NL: 6.76E7
 Base Peak m/z= 100.00000-1500.00000 F:
 FTMS + p ESI Full ms [100.00-1500.00]
 MS Lcornutus

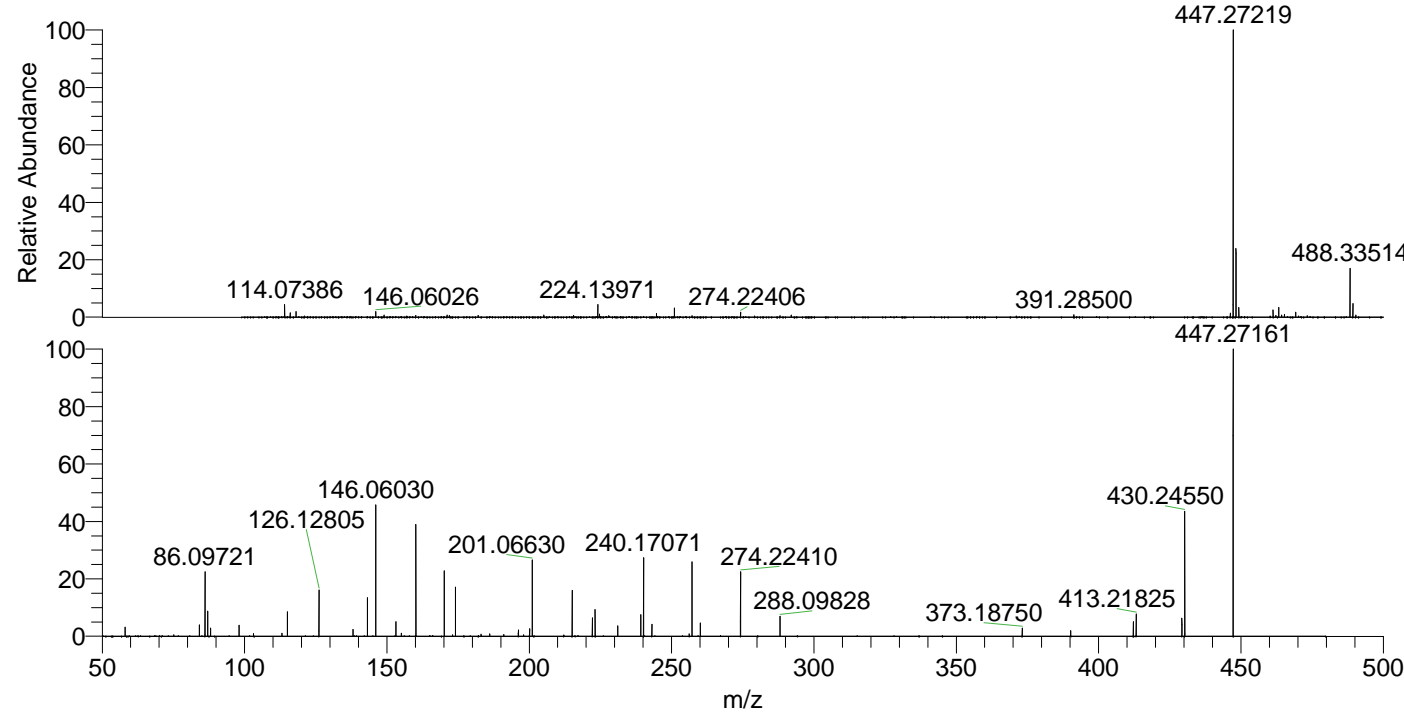
NL: 1.39E7
 Base Peak m/z= 447.26974-447.27422 F:
 FTMS + p ESI Full ms [100.00-1500.00]
 MS Lcornutus

NL: 6.20E5
 Base Peak m/z= 224.13878-224.14102 F:
 FTMS + p ESI Full ms [100.00-1500.00]
 MS Lcornutus

NL: 1.23E6
 Base Peak m/z= 50.00000-1500.00000 F:
 FTMS + p ESI d Full ms2
 447.27@hcd35.00 [50.00-475.00] MS
 Lcornutus

Lcornutus#2858-2882 RT: 7.17-7.23 AV:
 F: FTMS + p ESI d Full ms2 447.27 ...
 m/z= 50.00000-1000.00000

m/z	Intensity	Relative
58.06602	28898.3	3.19
84.08153	35752.7	3.95
86.09721	206125.2	22.79
87.05601	78452.0	8.67
88.04000	26108.3	2.89
98.09710	35293.0	3.90
103.12348	8882.6	0.98
113.10794	9601.9	1.06
115.05075	76979.6	8.51
126.12805	144944.4	16.02
138.05544	22285.7	2.46
143.15445	119930.3	13.26
146.06030	412003.8	45.55
153.13887	45366.6	5.02
155.08165	9842.3	1.09
160.18097	348678.4	38.55
160.19332	5796.0	0.64
170.16542	203218.0	22.47
173.07125	4567.8	0.50
174.05521	152159.1	16.82
183.11367	6545.1	0.72
186.09217	7214.8	0.80
191.08181	5296.4	0.59
196.18121	19574.8	2.16
198.05623	4890.1	0.54
200.14000	23487.5	2.60
201.06630	238171.0	26.33
201.08281	7836.1	0.87
215.08204	144534.9	15.98
222.16072	59718.8	6.60
223.14461	84909.3	9.39
231.11336	32174.6	3.56
239.18699	67381.9	7.45
240.17071	246033.8	27.20
243.07733	37065.3	4.10
256.21499	7703.9	0.85
257.19719	232625.9	25.72
260.10403	41381.9	4.57
274.22410	201306.3	22.25
288.09828	61880.6	6.84
373.18750	25405.3	2.81
390.21479	17331.3	1.92
412.23487	45890.3	5.07
413.21825	69138.0	7.64
429.26065	58077.6	6.42
430.24550	388097.8	42.90
447.27161	904573.6	100.00



NL: 1.39E7
 Lcornutus#2869 RT: 7.20
 AV: 1 T: FTMS + p ESI
 Full lock ms
 [100.00-1500.00]

NL: 8.91E5
 Lcornutus#2855-2885 RT:
 7.17-7.23 AV: 5 F: FTMS
 + p ESI d Full ms2
 447.27@hcd35.00
 [50.00-475.00]

m/z	Intensity	Relative
114.07386	114.07386	0.01
146.06026	146.06026	0.02
224.13971	224.13971	0.03
274.22406	274.22406	0.03
391.28500	391.28500	0.04
447.27219	904573.6	100.00
488.33514	488.33514	0.05