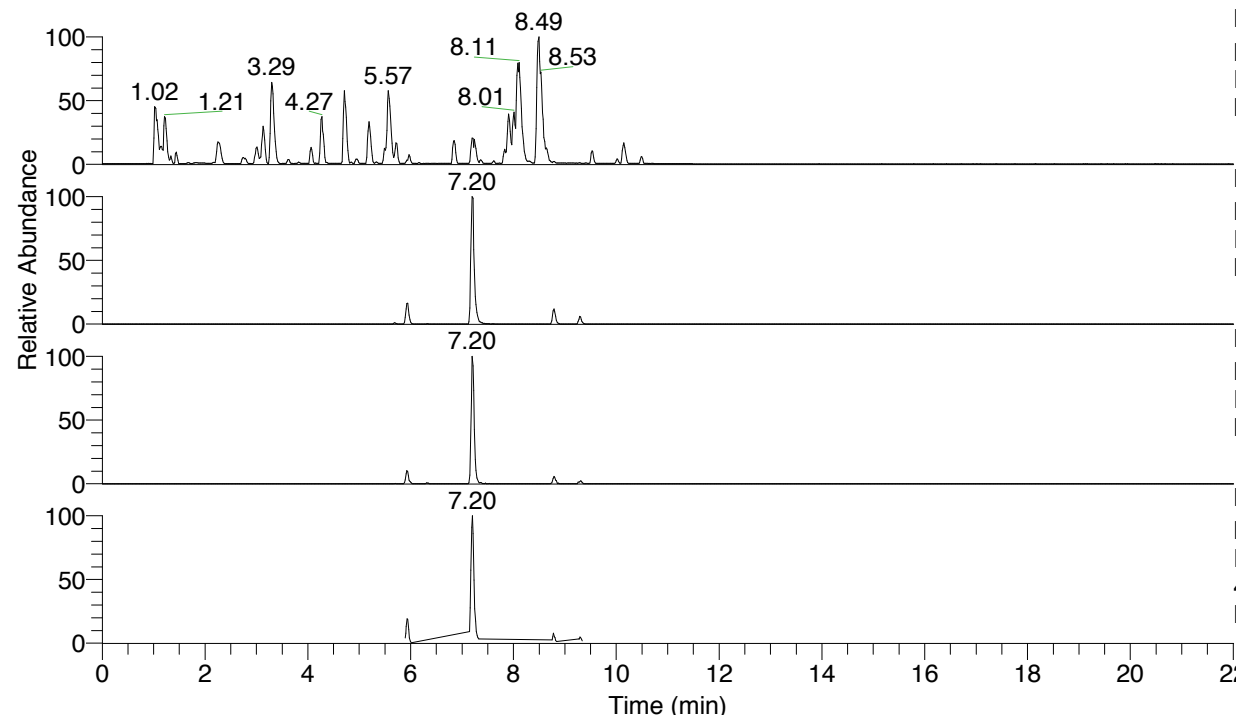


RT: 0.00 - 22.01



NL: 6.76E7  
 Base Peak m/z= 100.00000-1500.00000 F:  
 FTMS + p ESI Full ms [100.00-1500.00]  
 MS Lcornutus

NL: 1.39E7  
 Base Peak m/z= 447.26974-447.27422 F:  
 FTMS + p ESI Full ms [100.00-1500.00]  
 MS Lcornutus

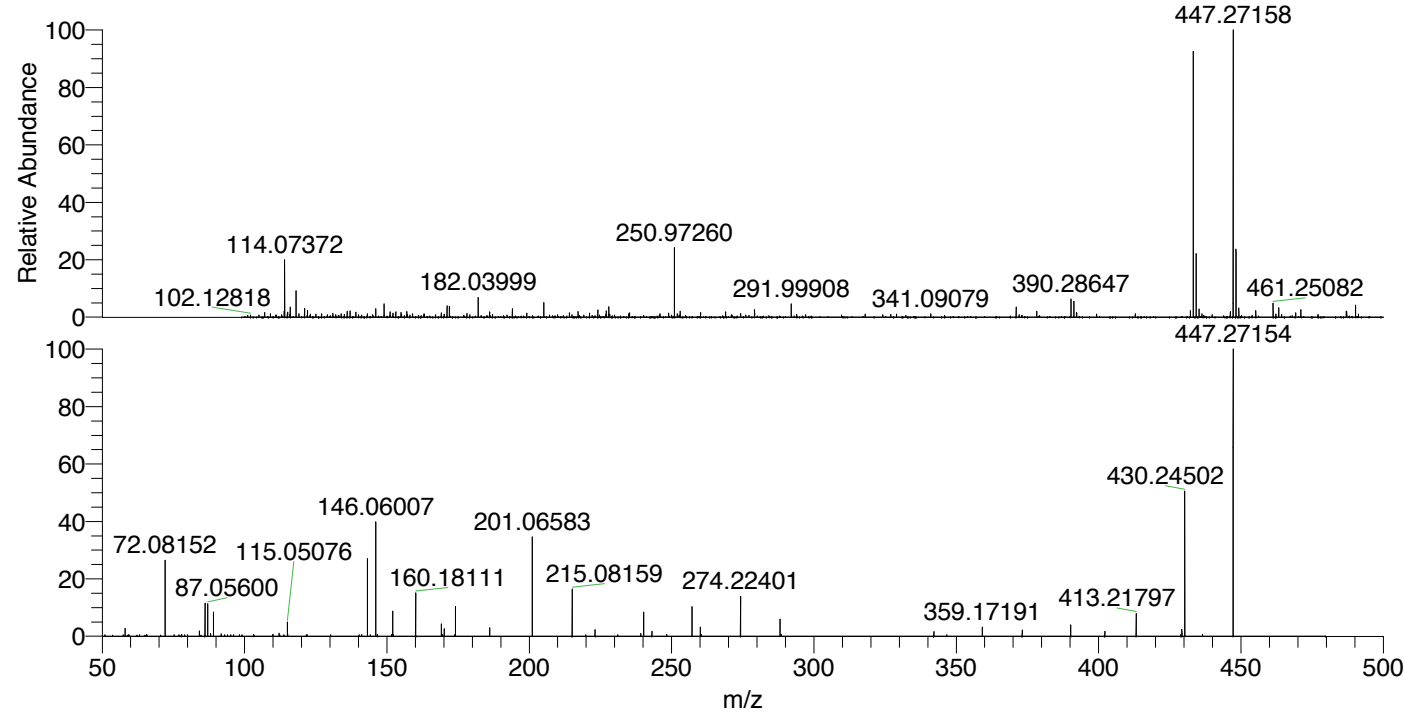
NL: 6.20E5  
 Base Peak m/z= 224.13878-224.14102 F:  
 FTMS + p ESI Full ms [100.00-1500.00]  
 MS Lcornutus

NL: 1.23E6  
 Base Peak m/z= 50.00000-1500.00000 F:  
 FTMS + p ESI d Full ms2  
 447.27@hcd35.00 [50.00-475.00] MS  
 Lcornutus

Lcornutus#2352-2378 RT: 5.89-5.96 AV:

F: FTMS + p ESI d Full ms2 447.27 ...  
 m/z= 50.00000-1000.00000

m/z	Intensity	Relative
58.06601	3533.5	2.52
72.08152	35400.3	25.20
84.08149	2357.8	1.68
86.09719	14798.4	10.54
87.05600	14830.1	10.56
88.03991	1285.9	0.92
89.10807	11233.7	8.00
91.75827	1147.1	0.82
103.12347	773.3	0.55
109.99197	748.3	0.53
112.11288	1472.4	1.05
112.35183	725.2	0.52
115.05076	6330.5	4.51
115.12345	975.6	0.69
141.10391	803.7	0.57
143.15421	36703.6	26.13
144.76323	841.2	0.60
146.06008	54064.9	38.49
146.69499	766.3	0.55
152.07055	11250.8	8.01
160.02483	780.6	0.56
160.18113	20916.4	14.89
169.09734	5521.2	3.93
169.59290	828.7	0.59
170.16557	3498.5	2.49
174.05517	13774.9	9.81
186.09229	3826.4	2.72
186.12430	2204.5	1.57
201.06582	47855.0	34.07
215.08163	22579.3	16.07
223.14420	2951.2	2.10
239.18685	1204.4	0.86
240.17130	11981.1	8.53
243.07679	2235.3	1.59
248.28591	737.8	0.53
257.19784	14167.9	10.09
260.10298	4028.2	2.87
260.44141	746.8	0.53
274.22396	18722.6	13.33
288.09690	7719.1	5.50
288.56796	816.6	0.58
288.85217	731.6	0.52
339.60993	784.6	0.56
342.14580	2130.6	1.52
359.17191	4147.2	2.95
373.18867	2824.9	2.01
390.21379	5039.4	3.59
402.21372	2172.3	1.55
413.21797	10378.1	7.39
428.92765	823.7	0.59
429.26164	3164.7	2.25
430.24495	68809.0	48.99
434.85403	809.2	0.58
436.52599	908.2	0.65
447.27152	140463.3	100.00



NL: 2.30E6  
 Lcornutus#2371 RT: 5.94  
 AV: 1 T: FTMS + p ESI  
 Full lock ms  
 [100.00-1500.00]

NL: 1.54E5  
 Lcornutus#2353-2383 RT:  
 5.90-5.96 AV: 5 F: FTMS  
 + p ESI d Full ms2  
 447.27@hcd35.00  
 [50.00-475.00]

Lcornutus#2352-2378 RT: 5.89-5.96 AV: 6

F: FTMS + p ESI d Full ms2 447.27@hcd35.00 [50.00-475.00]

m/z= 50.00000-1000.00000

m/z	Intensity	Relative
58.06601	3533.5	2.52
65.72625	714.5	0.51
72.08152	35400.3	25.20
84.08149	2357.8	1.68
86.09719	14798.4	10.54
87.05600	14830.1	10.56
88.03991	1285.9	0.92
89.10807	11233.7	8.00
91.75827	1147.1	0.82
99.10314	705.3	0.50
103.12347	773.3	0.55
109.99197	748.3	0.53
112.11288	1472.4	1.05
112.35183	725.2	0.52
113.82291	709.1	0.50
115.05076	6330.5	4.51
115.12345	975.6	0.69
141.10391	803.7	0.57
143.15421	36703.6	26.13
144.76323	841.2	0.60
146.06008	54064.9	38.49
146.69499	766.3	0.55
152.07055	11250.8	8.01
160.02483	780.6	0.56
160.18113	20916.4	14.89
169.09734	5521.2	3.93
169.59290	828.7	0.59
170.16557	3498.5	2.49
173.74584	719.7	0.51
174.05517	13774.9	9.81
186.09229	3826.4	2.72
186.12430	2204.5	1.57
201.06582	47855.0	34.07
215.08163	22579.3	16.07
223.14420	2951.2	2.10
231.11309	709.6	0.51
239.18685	1204.4	0.86
240.17130	11981.1	8.53
243.07679	2235.3	1.59

Lcornutus#2352-2378 RT: 5.89-5.96 AV: 6

F: FTMS + p ESI d Full ms2 447.27@hcd35.00 [50.00-475.00]

m/z= 50.00000-1000.00000

m/z	Intensity	Relative
248.28591	737.8	0.53
257.19784	14167.9	10.09
260.10298	4028.2	2.87
260.44141	746.8	0.53
274.22396	18722.6	13.33
288.09690	7719.1	5.50
288.56796	816.6	0.58
288.85217	731.6	0.52
339.60993	784.6	0.56
342.14580	2130.6	1.52
346.68911	718.3	0.51
359.17191	4147.2	2.95
373.18867	2824.9	2.01
390.21379	5039.4	3.59
402.21372	2172.3	1.55
413.21797	10378.1	7.39
428.92765	823.7	0.59
429.26164	3164.7	2.25
430.24495	68809.0	48.99
434.85403	809.2	0.58
436.52599	908.2	0.65
447.27152	140463.3	100.00