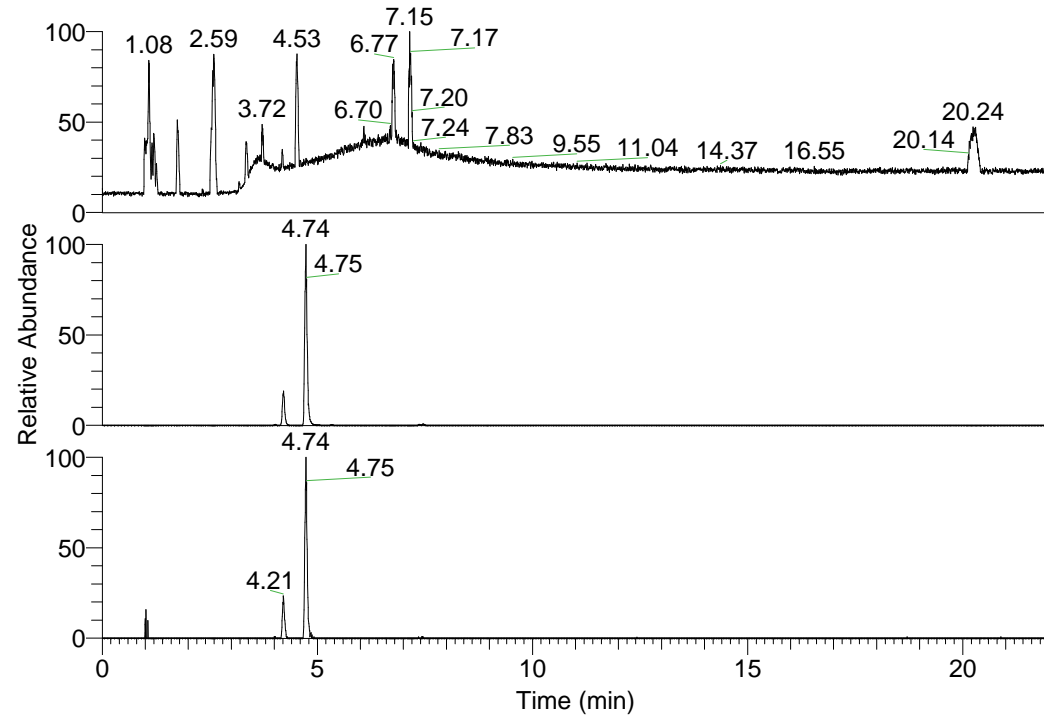


RT: 0.00 - 22.01



NL: 6.93E7  
Base Peak m/z=  
100.00000-1500.00000 F:  
FTMS + p ESI Full ms  
[100.00-1500.00] MS  
Lcornutus\_HDX

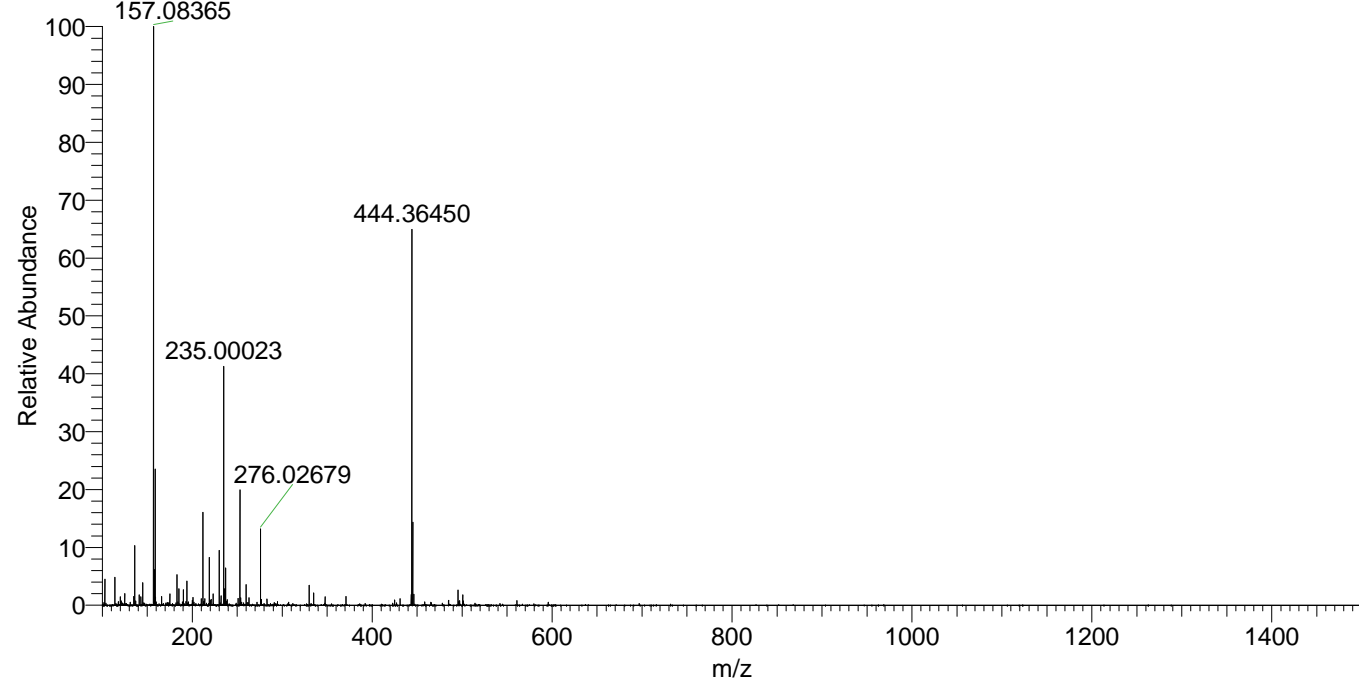
Lcornutus\_HDX#744 RT: 4.74  
T: FTMS + p ESI Full ms [100.00-1500.00]  
m/z = 444.00000-445.00000

m/z	Intensity	Relative	Delta (ppm)	Composition
444.36450	12598642.0	100.00	0.44	C <sub>22</sub> H <sub>30</sub> <sup>2</sup> H <sub>9</sub> O <sub>3</sub> N <sub>6</sub>
			-3.04	C <sub>22</sub> H <sub>32</sub> <sup>2</sup> H <sub>8</sub> O <sub>3</sub> N <sub>6</sub>
			3.92	C <sub>22</sub> H <sub>28</sub> <sup>2</sup> H <sub>10</sub> O <sub>3</sub> N <sub>6</sub>

NL: 1.65E7  
Base Peak m/z=  
444.36264-444.36708 F:  
FTMS + p ESI Full ms  
[100.00-1500.00] MS  
Lcornutus\_HDX

NL: 4.66E5  
Base Peak m/z=  
223.18836-223.19060 F:  
FTMS + p ESI Full ms  
[100.00-1500.00] MS  
Lcornutus\_HDX

Lcornutus\_HDX #744 RT: 4.74 AV: 1 NL: 1.91E7  
T: FTMS + p ESI Full ms [100.00-1500.00]



Lcornutus\_HDX #744 RT: 4.74 AV: 1 NL: 1.24E7  
T: FTMS + p ESI Full ms [100.00-1500.00]

