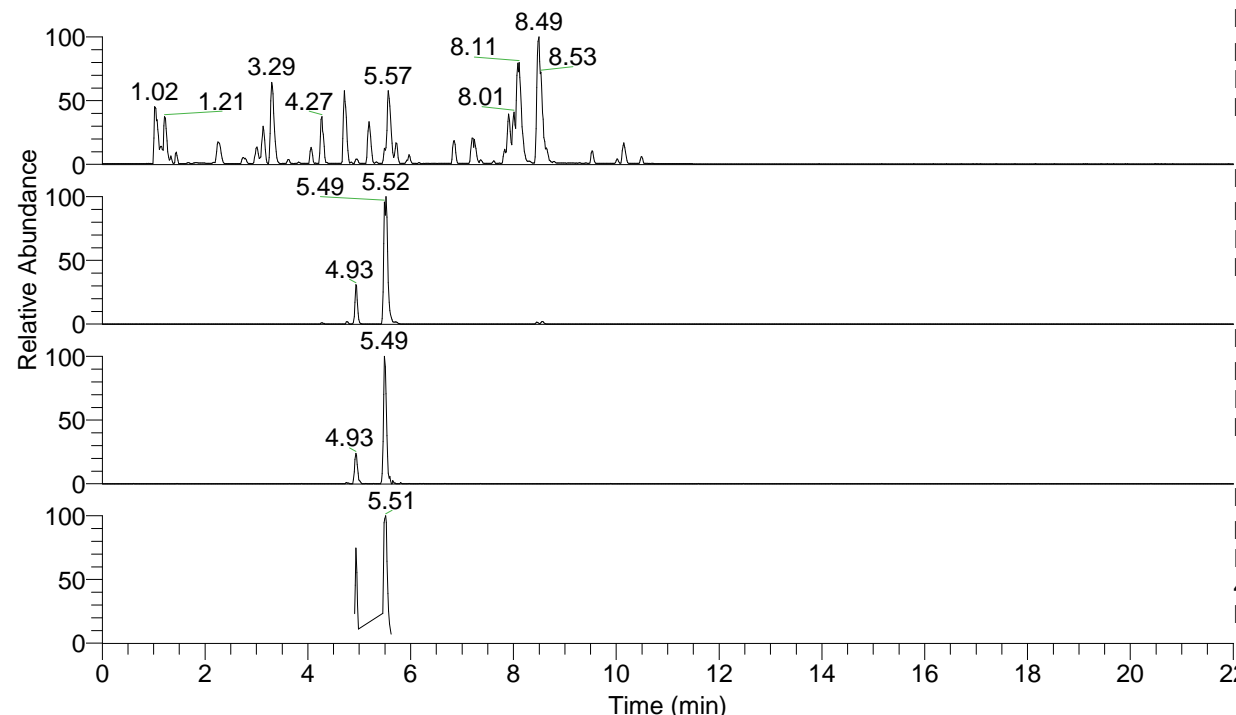


RT: 0.00 - 22.01



NL: 6.76E7
 Base Peak m/z= 100.00000-1500.00000 F:
 FTMS + p ESI Full ms [100.00-1500.00]
 MS Lcornutus

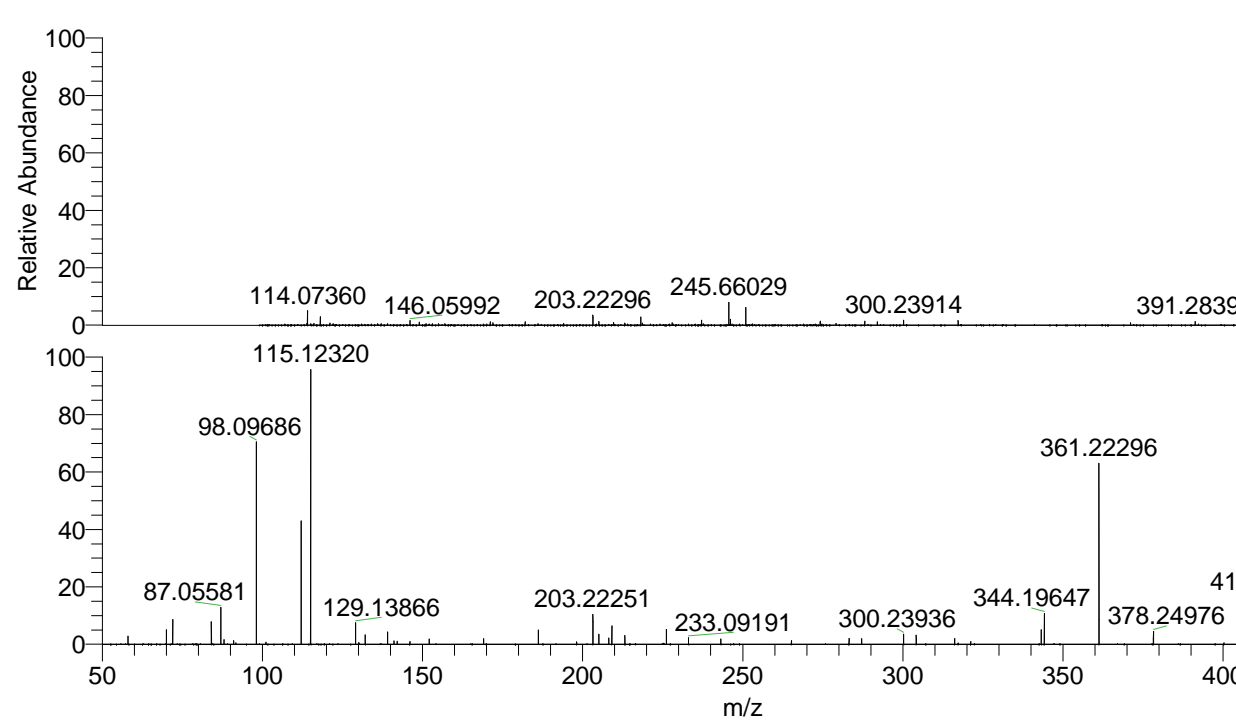
NL: 8.86E6
 Base Peak m/z= 435.30618-435.31054 F:
 FTMS + p ESI Full ms [100.00-1500.00]
 MS Lcornutus

NL: 3.46E5
 Base Peak m/z= 218.15700-218.15918 F:
 FTMS + p ESI Full ms [100.00-1500.00]
 MS Lcornutus

NL: 6.73E5
 Base Peak m/z= 50.00000-1500.00000 F:
 FTMS + p ESI d Full ms2
 435.31@hcd35.00 [50.00-460.00] MS
 Lcornutus

Lcornutus#2178-2217 RT: 5.46-5.56 AV:
 F: FTMS + p ESI d Full ms2 435.31 ...
 m/z= 50.00000-1000.00000

m/z	Intensity	Relative
58.06584	13066.2	2.90
70.06572	22948.5	5.09
72.08143	39058.0	8.66
84.08124	35346.7	7.84
87.05581	58859.2	13.06
88.03991	7463.5	1.66
91.05489	5666.2	1.26
98.09686	318182.8	70.57
101.10770	3473.0	0.77
112.11232	192444.3	42.68
115.05049	6808.5	1.51
115.12320	428548.3	95.05
129.13866	34456.4	7.64
130.12293	2581.3	0.57
132.14961	14948.6	3.32
139.12305	19575.7	4.34
141.10211	5598.3	1.24
142.13397	4955.5	1.10
146.05986	4500.0	1.00
152.07071	8186.9	1.82
169.09699	9244.2	2.05
186.19608	22016.3	4.88
198.12352	3601.9	0.80
203.22251	46505.9	10.32
205.09735	16297.4	3.61
208.14460	9544.7	2.12
209.12824	28666.6	6.36
213.20756	14342.5	3.18
226.15484	23720.7	5.26
233.09191	10072.4	2.23
243.18171	8092.7	1.79
265.20257	5817.4	1.29
283.21269	9745.0	2.16
287.13901	8674.9	1.92
300.23936	15964.2	3.54
304.16501	14308.5	3.17
316.16536	8722.4	1.93
321.19327	4071.2	0.90
343.21215	23291.6	5.17
344.19647	48313.6	10.72
361.22296	286499.2	63.55
378.24976	20033.1	4.44
417.29768	5904.3	1.31
418.28080	74332.6	16.49
435.30736	450852.9	100.00



435.30759 NL: 8.72E6
 Lcornutus#2203 RT: 5.52
 AV: 1 T: FTMS + p ESI
 Full lock ms
 [100.00-1500.00]

435.30736 NL: 4.47E5
 Lcornutus#2178-2217 RT:
 5.46-5.56 AV: 8 F: FTMS
 + p ESI d Full ms2
 435.31@hcd35.00
 [50.00-460.00]