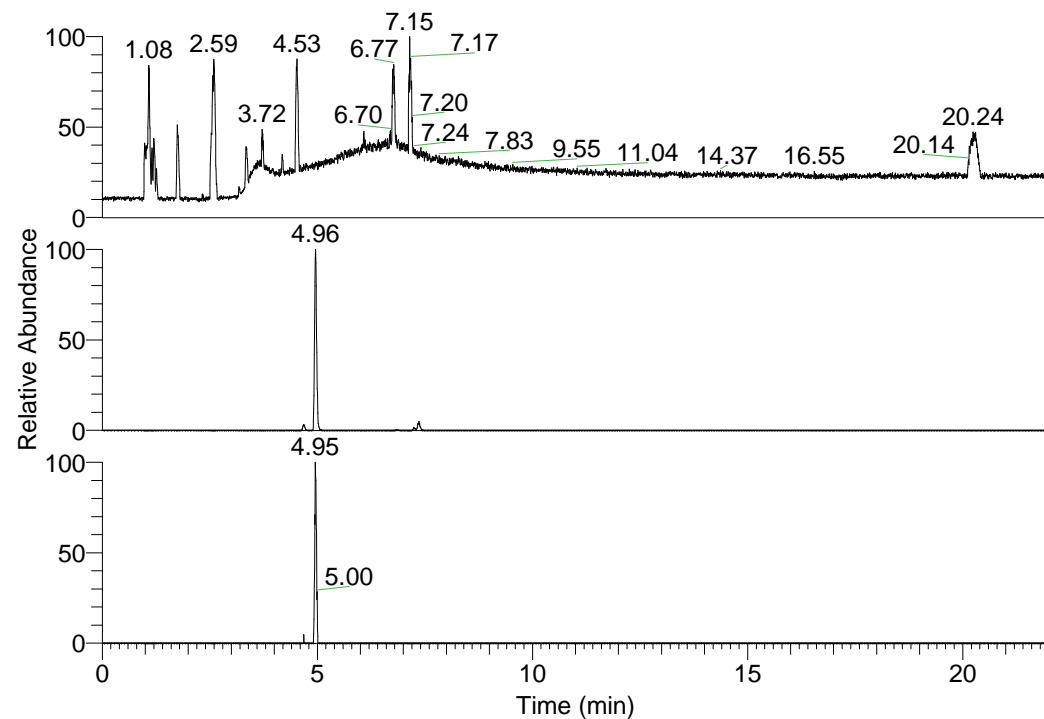


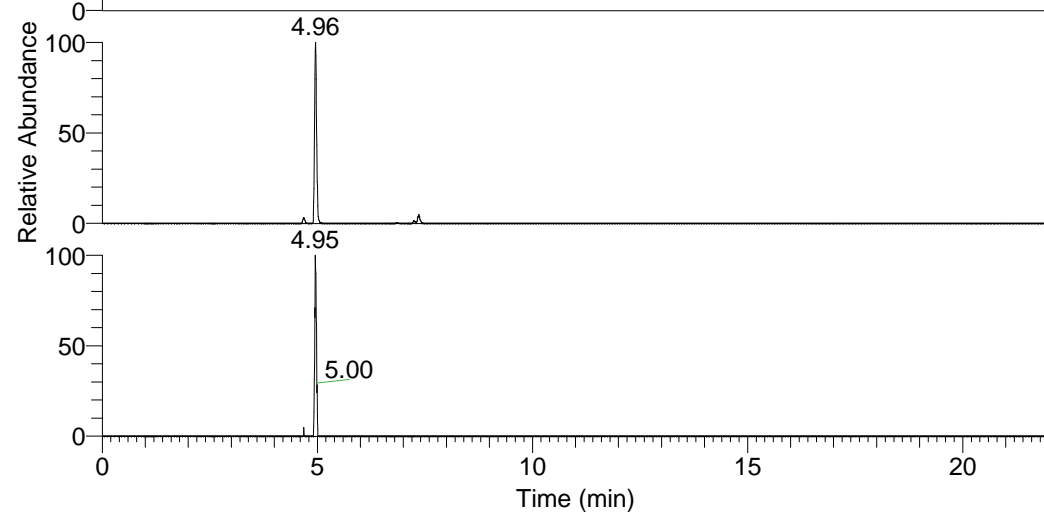
RT: 0.00 - 22.01



NL: 6.93E7  
 Base Peak m/z=  
 100.00000-1500.00000 F:  
 FTMS + p ESI Full ms  
 [100.00-1500.00] MS  
 Lcornutus\_HDX

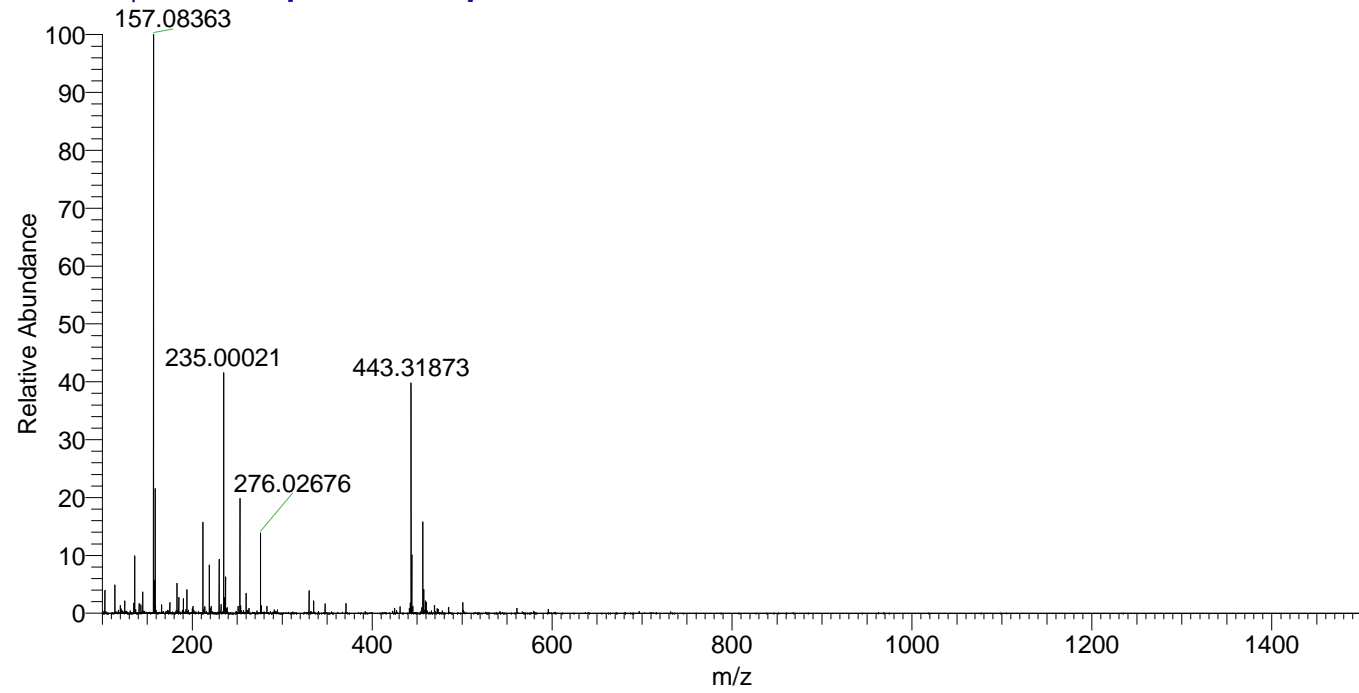
Lcornutus\_HDX#779 RT: 4.96  
 T: FTMS + p ESI Full ms [100.00-1500.00]  
 m/z= 443.00000-444.00000

m/z	Intensity	Relative	Delta (ppm)	Composition
443.31873	8670390.0	100.00	0.40	C <sub>21</sub> H <sub>23</sub> <sup>2</sup> H <sub>10</sub> O <sub>4</sub> N <sub>6</sub>
			-3.09	C <sub>21</sub> H <sub>25</sub> <sup>2</sup> H <sub>9</sub> O <sub>4</sub> N <sub>6</sub>
			3.89	C <sub>21</sub> H <sub>21</sub> <sup>2</sup> H <sub>11</sub> O <sub>4</sub> N <sub>6</sub>



NL: 8.67E6  
 Base Peak m/z=  
 443.31688-443.32132 F:  
 FTMS + p ESI Full ms  
 [100.00-1500.00] MS  
 Lcornutus\_HDX

Lcornutus\_HDX #779 RT: 4.96 AV: 1 NL: 2.13E7  
 T: FTMS + p ESI Full ms [100.00-1500.00]



Lcornutus\_HDX #779 RT: 4.96 AV: 1 NL: 8.48E6  
 T: FTMS + p ESI Full ms [100.00-1500.00]

