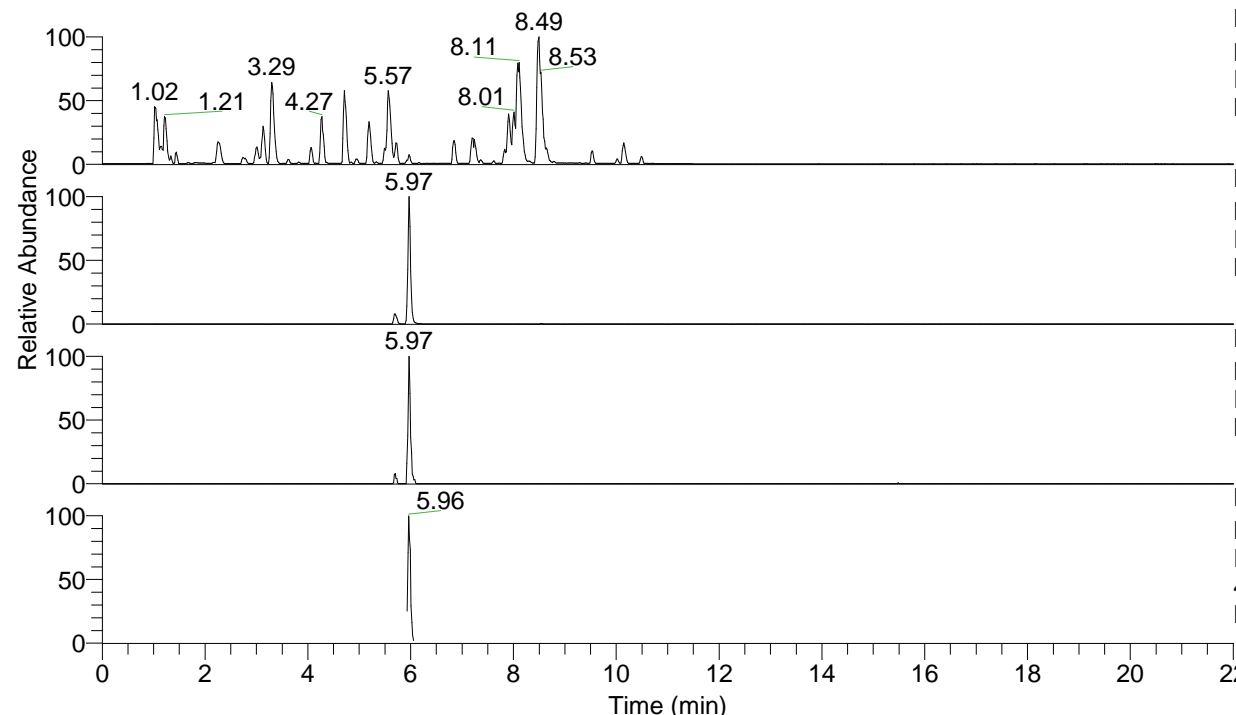


RT: 0.00 - 22.01



NL: 6.76E7  
 Base Peak m/z= 100.00000-1500.00000 F:  
 FTMS + p ESI Full ms [100.00-1500.00]  
 MS Lcornutus

NL: 5.15E6  
 Base Peak m/z= 433.25416-433.25850 F:  
 FTMS + p ESI Full ms [100.00-1500.00]  
 MS Lcornutus

NL: 1.28E5  
 Base Peak m/z= 217.13099-217.13317 F:  
 FTMS + p ESI Full ms [100.00-1500.00]  
 MS Lcornutus

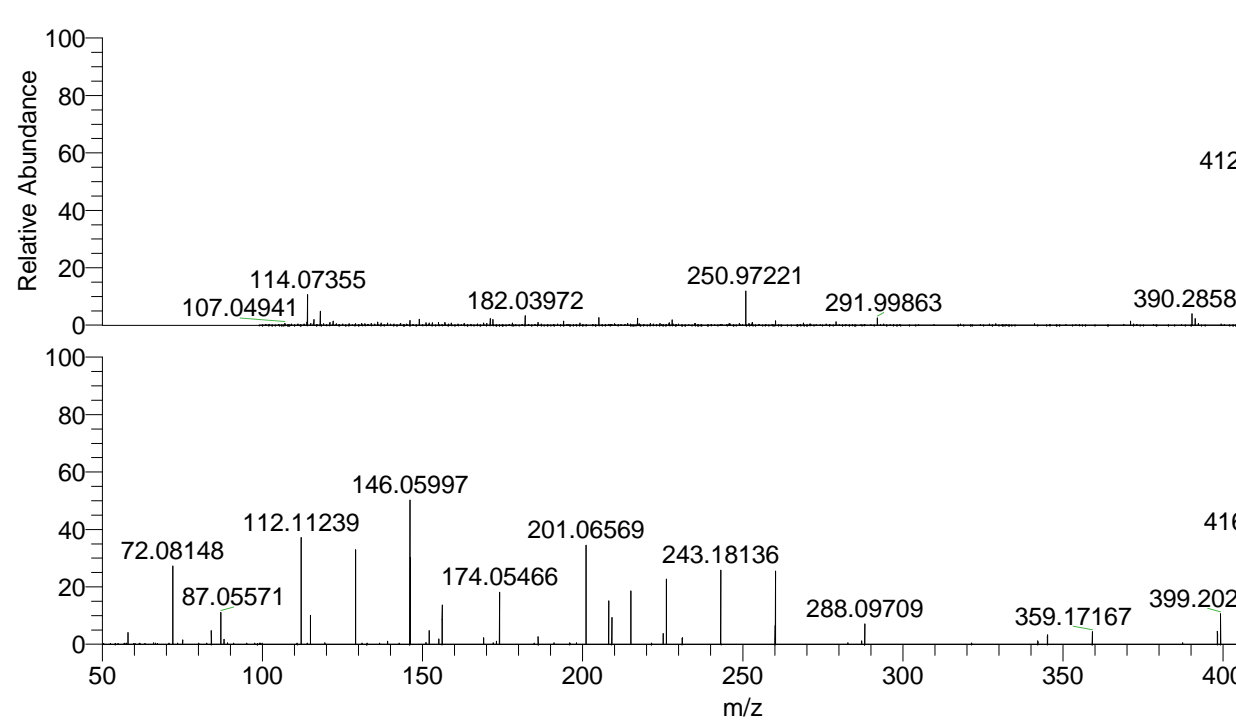
NL: 3.31E5  
 Base Peak m/z= 50.00000-1500.00000 F:  
 FTMS + p ESI d Full ms2  
 433.26@hcd35.00 [50.00-460.00] MS  
 Lcornutus

Lcornutus#2373-2390 RT: 5.95-5.99 AV:

F: FTMS + p ESI d Full ms2 433.26 ...

m/z= 50.00000-1000.00000

m/z	Intensity	Relative
58.06587	10593.7	4.07
72.08148	70995.6	27.26
75.09232	4017.0	1.54
84.08132	12422.9	4.77
87.05571	28786.3	11.05
88.03978	4466.9	1.71
112.11239	95759.9	36.76
115.05057	26160.3	10.04
129.13868	87304.8	33.52
139.12259	2710.2	1.04
146.05997	130800.3	50.22
146.16503	80531.2	30.92
151.08621	1718.6	0.66
152.07026	12274.2	4.71
155.08177	4695.5	1.80
156.14931	36217.2	13.90
169.09704	6054.8	2.32
173.07101	2667.3	1.02
174.05466	46637.6	17.91
186.09179	1768.5	0.68
186.12362	6873.9	2.64
198.05550	1348.7	0.52
201.06569	90017.1	34.56
208.14422	39301.0	15.09
209.12833	23837.1	9.15
215.08137	48716.8	18.70
225.17034	9697.3	3.72
226.15452	58759.7	22.56
231.11258	5830.5	2.24
243.07626	8361.5	3.21
243.18136	66580.2	25.56
260.10286	17208.1	6.61
260.20765	65575.5	25.18
282.83076	1319.3	0.51
287.11416	3199.4	1.23
288.09709	18221.1	7.00
342.14691	3031.7	1.16
345.15519	8533.4	3.28
359.17167	11565.2	4.44
398.21844	11574.3	4.44
399.20228	27397.7	10.52
415.24542	9610.1	3.69
416.22875	97024.6	37.25
433.25550	260468.8	100.00



NL: 4.99E6  
 Lcornutus#2383 RT: 5.97  
 AV: 1 T: FTMS + p ESI  
 Full lock ms  
 [100.00-1500.00]

NL: 2.57E5  
 Lcornutus#2369-2395 RT:  
 5.95-5.99 AV: 4 F: FTMS  
 + p ESI d Full ms2  
 433.26@hcd35.00  
 [50.00-460.00]