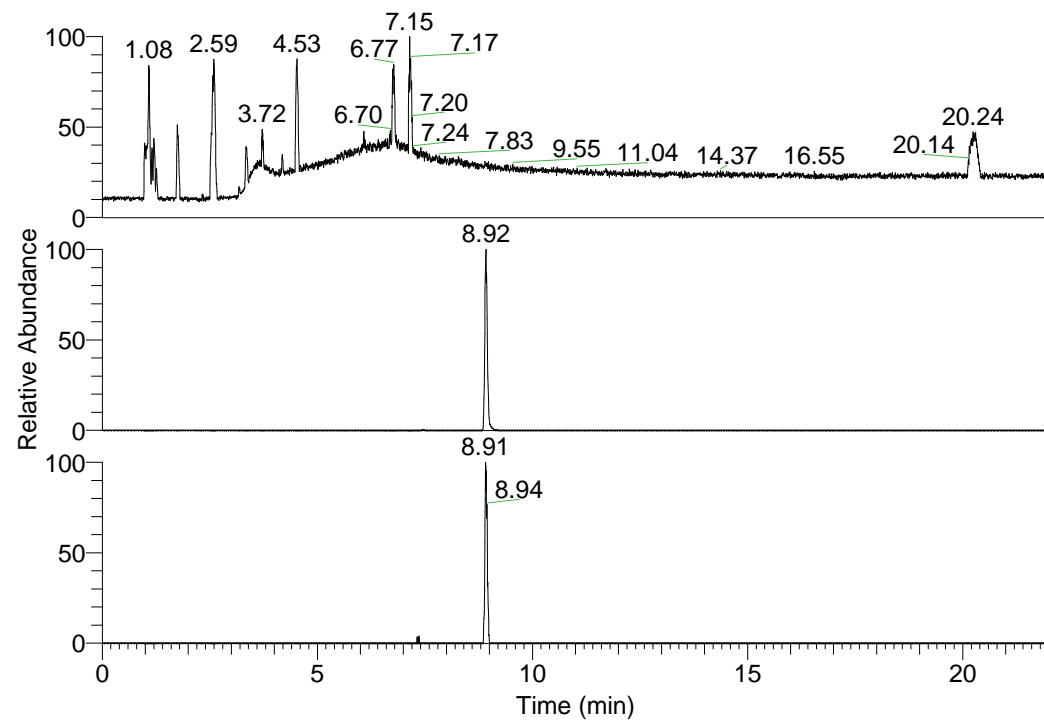


RT: 0.00 - 22.01



NL: 6.93E7
 Base Peak m/z=
 100.00000-1500.00000 F:
 FTMS + p ESI Full ms
 [100.00-1500.00] MS
 Lcornutus_HDX

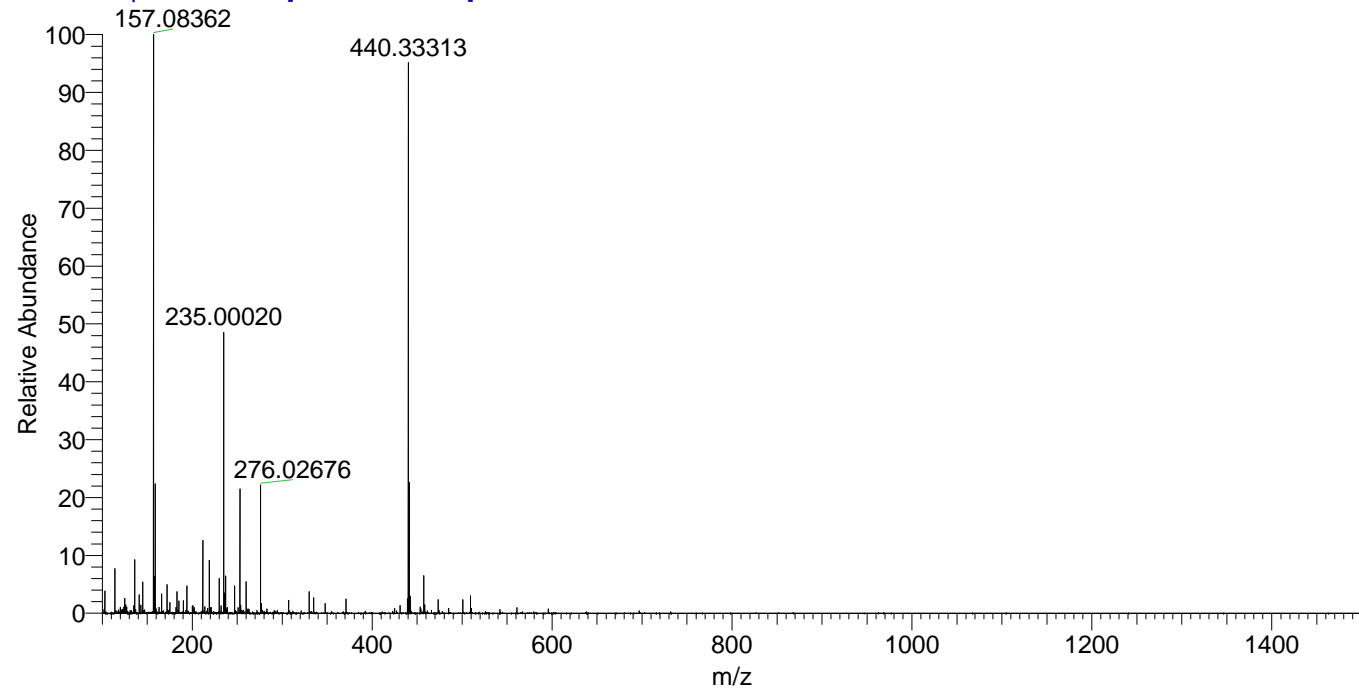
NL: 1.94E7
 Base Peak m/z=
 440.33136-440.33576 F:
 FTMS + p ESI Full ms
 [100.00-1500.00] MS
 Lcornutus_HDX

NL: 1.22E5
 Base Peak m/z=
 221.17272-221.17494 F:
 FTMS + p ESI Full ms
 [100.00-1500.00] MS
 Lcornutus_HDX

Lcornutus_HDX#1430 RT: 8.92
 T: FTMS + p ESI Full ms [100.00-1500.00]
 m/z= 440.00000-441.00000

m/z	Intensity	Relative	Delta (ppm)	Composition
440.33313	19357218.0	100.00	0.28	C ₂₂ H ₂₆ ² H ₉ O ₃ N ₆
			-3.24	C ₂₂ H ₂₈ ² H ₈ O ₃ N ₆
			3.80	C ₂₂ H ₂₄ ² H ₁₀ O ₃ N ₆

Lcornutus_HDX #1430 RT: 8.92 AV: 1 NL: 2.00E7
 T: FTMS + p ESI Full ms [100.00-1500.00]



Lcornutus_HDX #1430 RT: 8.92 AV: 1 NL: 1.91E7
 T: FTMS + p ESI Full ms [100.00-1500.00]

