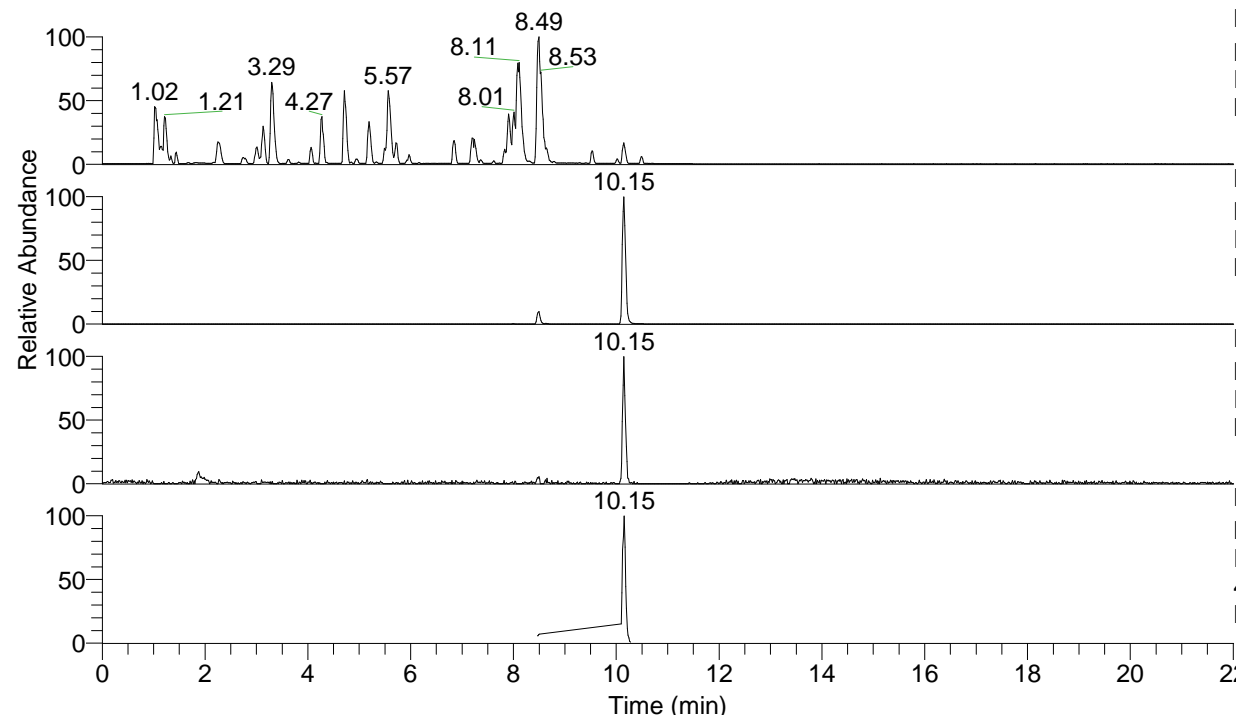


RT: 0.00 - 22.01



NL: 6.76E7  
 Base Peak m/z= 100.00000-1500.00000 F:  
 FTMS + p ESI Full ms [100.00-1500.00]  
 MS Lcornutus

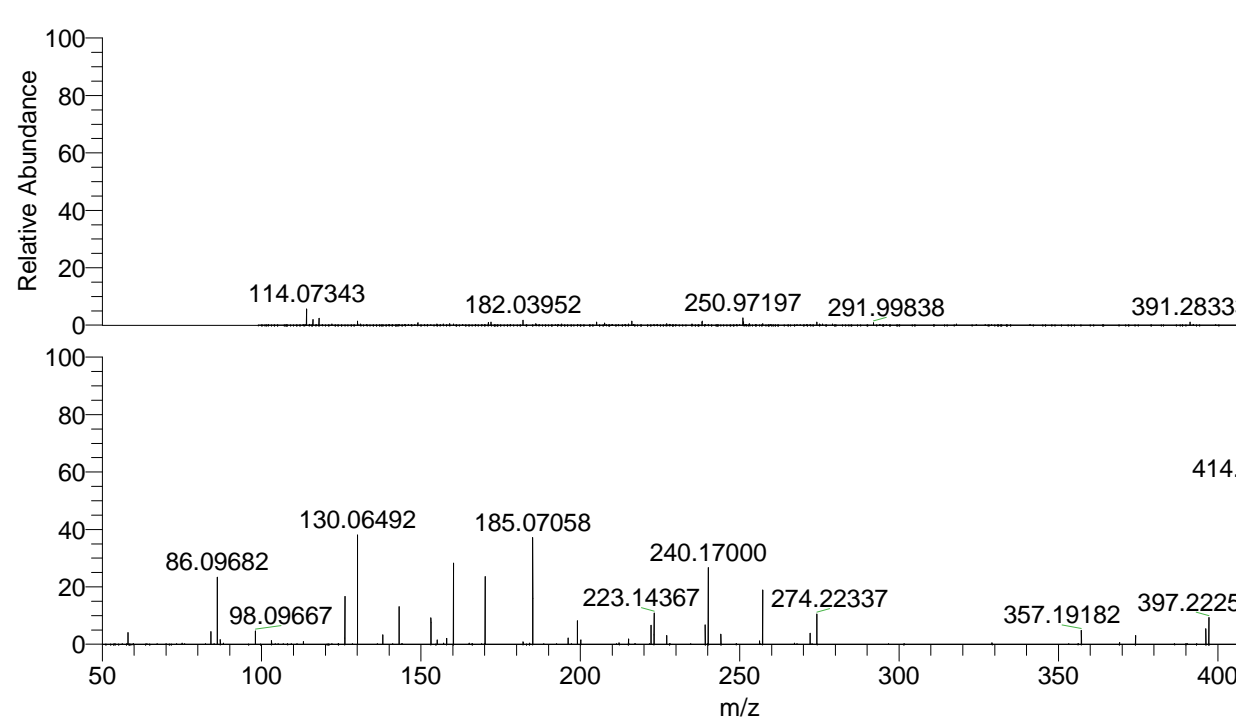
NL: 1.15E7  
 Base Peak m/z= 431.27490-431.27922 F:  
 FTMS + p ESI Full ms [100.00-1500.00]  
 MS Lcornutus

NL: 1.65E5  
 Base Peak m/z= 216.14136-216.14352 F:  
 FTMS + p ESI Full ms [100.00-1500.00]  
 MS Lcornutus

NL: 1.00E6  
 Base Peak m/z= 50.00000-1500.00000 F:  
 FTMS + p ESI d Full ms2  
 431.28@hcd35.00 [50.00-460.00] MS  
 Lcornutus

Lcornutus#4034-4064 RT: 10.11-10.18  
 F: FTMS + p ESI d Full ms2 431.28 ...  
 m/z= 50.00000-1000.00000

m/z	Intensity	Relative
58.06583	26441.8	3.95
84.08129	28635.6	4.27
86.09682	154165.3	23.00
87.05566	10461.2	1.56
98.09667	30713.1	4.58
103.12321	8356.7	1.25
113.10753	6149.5	0.92
126.12753	107051.6	15.97
130.06492	250718.2	37.41
138.05475	21390.0	3.19
143.15397	84331.9	12.58
153.13835	59037.7	8.81
155.08141	9622.8	1.44
158.05984	13714.1	2.05
160.18044	181504.6	27.08
170.16486	152004.9	22.68
182.06020	5197.3	0.78
185.07058	239508.5	35.74
196.18068	13837.2	2.06
199.08594	53965.5	8.05
200.13890	10022.0	1.50
212.17586	3509.8	0.52
215.11763	11790.2	1.76
222.15966	43587.4	6.50
223.14367	72151.3	10.77
227.08098	20716.8	3.09
239.18608	44706.9	6.67
240.17000	171980.9	25.66
244.10805	22710.4	3.39
256.21291	7262.2	1.08
257.19644	121825.7	18.18
272.10217	25405.2	3.79
274.22337	68187.6	10.17
357.19182	31932.7	4.76
369.18981	4233.2	0.63
374.21741	20382.8	3.04
396.23903	35059.5	5.23
397.22258	62522.8	9.33
413.26533	39802.0	5.94
414.24877	359882.7	53.70
431.27565	670191.8	100.00



NL: 1.15E7  
 Lcornutus#4051 RT: 10.15  
 AV: 1 T: FTMS + p ESI  
 Full ms [100.00-1500.00]

NL: 6.42E5  
 Lcornutus#4031-4069 RT:  
 10.11-10.18 AV: 6 F:  
 FTMS + p ESI d Full ms2  
 431.28@hcd35.00  
 [50.00-460.00]

