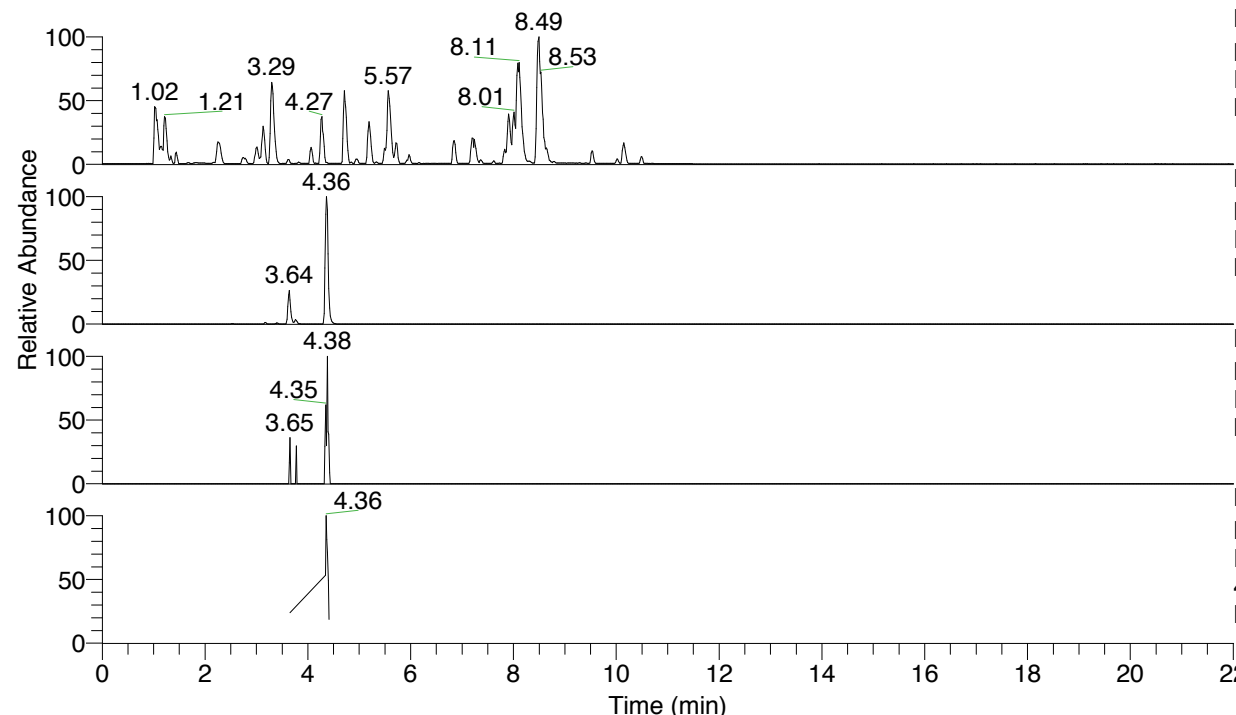


RT: 0.00 - 22.01



NL: 6.76E7
 Base Peak m/z= 100.00000-1500.00000 F:
 FTMS + p ESI Full ms [100.00-1500.00]
 MS Lcornutus

NL: 1.08E6
 Base Peak m/z= 424.25387-424.25811 F:
 FTMS + p ESI Full ms [100.00-1500.00]
 MS Lcornutus

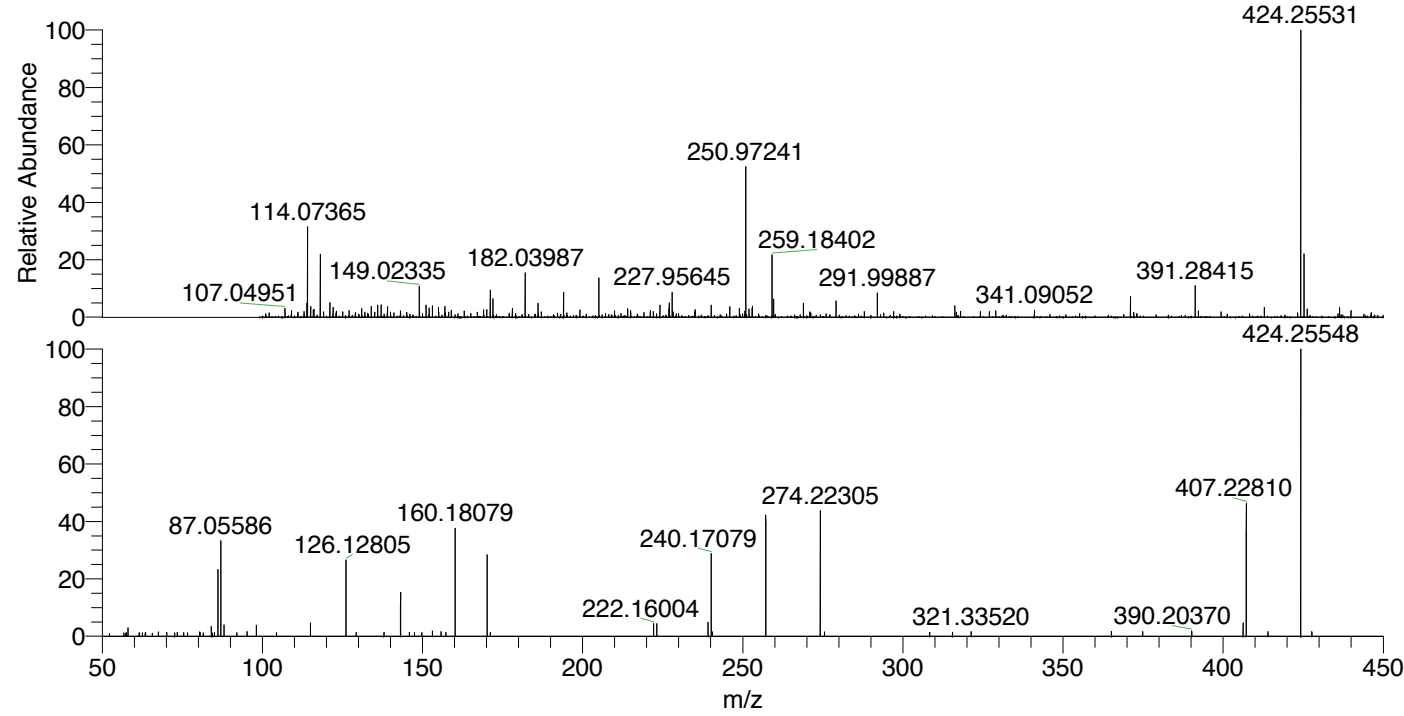
NL: 1.35E4
 Base Peak m/z= 212.63085-212.63297 F:
 FTMS + p ESI Full ms [100.00-1500.00]
 MS Lcornutus

NL: 9.40E4
 Base Peak m/z= 50.00000-1500.00000 F:
 FTMS + p ESI d Full ms2
 424.26@hcd35.00 [50.00-450.00] MS
 Lcornutus

Lcornutus#1733-1748 RT: 4.34-4.38 AV:

F: FTMS + p ESI d Full ms2 424.26 ...
 m/z= 50.00000-1000.00000

m/z	Intensity	Relative
56.70245	825.5	1.19
57.57495	919.4	1.33
58.06583	2033.8	2.94
61.55498	820.6	1.19
63.47819	854.2	1.23
63.52477	991.4	1.43
67.52288	1038.2	1.50
70.12664	1015.3	1.47
73.46669	999.7	1.44
75.40587	916.2	1.32
80.43920	1064.6	1.54
80.56827	935.7	1.35
84.08135	2343.1	3.39
84.38219	832.0	1.20
85.07573	874.1	1.26
86.09725	16171.1	23.37
87.05586	23313.2	33.70
88.03989	2799.1	4.05
92.01939	861.1	1.24
95.24988	1097.2	1.59
98.09701	2673.6	3.86
104.40437	898.6	1.30
115.05056	3229.2	4.67
126.12805	18872.5	27.28
129.30439	952.0	1.38
137.96246	973.2	1.41
143.15463	10939.1	15.81
145.89857	1004.5	1.45
147.47631	930.5	1.34
149.79878	891.1	1.29
153.13819	1262.3	1.82
155.77670	1124.5	1.63
157.26799	975.9	1.41
160.18079	26180.2	37.84
170.16535	19631.2	28.38
171.15872	958.8	1.39
222.16004	3121.1	4.51
223.14342	3079.9	4.45
239.18664	3394.6	4.91
240.17079	20285.1	29.32
240.52840	1048.7	1.52
257.19730	29676.8	42.90
274.22305	31014.8	44.83
275.54088	1043.7	1.51
308.37479	968.1	1.40
315.49292	972.4	1.41
321.33520	1143.4	1.65
365.11727	1233.0	1.78
374.88376	1126.5	1.63
390.20370	1269.7	1.84
406.24726	3192.7	4.61
407.22810	32092.9	46.39
413.99977	1111.9	1.61
424.25548	69183.4	100.00
427.70071	1103.2	1.59



NL: 1.04E6
 Lcornutus#1741 RT: 4.36
 AV: 1 T: FTMS + p ESI
 Full lock ms
 [100.00-1500.00]

NL: 6.92E4
 Lcornutus#1729-1753 RT:
 4.34-4.38 AV: 4 F: FTMS
 + p ESI d Full ms2
 424.26@hcd35.00
 [50.00-450.00]

Lcornutus#1733-1748 RT: 4.34-4.38 AV: 4

F: FTMS + p ESI d Full ms2 424.26@hcd35.00 [50.00-450.00]

m/z= 50.00000-1000.00000

m/z	Intensity	Relative
52.21950	690.0	1.00
56.70245	825.5	1.19
57.31715	715.2	1.03
57.57495	919.4	1.33
58.06583	2033.8	2.94
61.55498	820.6	1.19
61.64315	819.6	1.18
62.55485	780.3	1.13
63.47819	854.2	1.23
63.52477	991.4	1.43
65.67149	764.1	1.10
67.52288	1038.2	1.50
70.12664	1015.3	1.47
72.59176	793.8	1.15
73.46669	999.7	1.44
75.40587	916.2	1.32
76.61712	818.1	1.18
80.43920	1064.6	1.54
80.56827	935.7	1.35
81.50703	814.0	1.18
84.08135	2343.1	3.39
84.38219	832.0	1.20
85.07573	874.1	1.26
86.09725	16171.1	23.37
87.05586	23313.2	33.70
88.03989	2799.1	4.05
92.01939	861.1	1.24
95.24988	1097.2	1.59
98.09701	2673.6	3.86
104.40437	898.6	1.30
115.05056	3229.2	4.67
126.12805	18872.5	27.28
129.30439	952.0	1.38
137.96246	973.2	1.41
143.15463	10939.1	15.81
145.89857	1004.5	1.45
147.47631	930.5	1.34
149.79878	891.1	1.29
153.13819	1262.3	1.82

Lcornutus#1733-1748 RT: 4.34-4.38 AV: 4

F: FTMS + p ESI d Full ms2 424.26@hcd35.00 [50.00-450.00]

m/z= 50.00000-1000.00000

m/z	Intensity	Relative
155.77670	1124.5	1.63
157.26799	975.9	1.41
160.18079	26180.2	37.84
170.16535	19631.2	28.38
171.15872	958.8	1.39
222.16004	3121.1	4.51
223.14342	3079.9	4.45
239.18664	3394.6	4.91
240.17079	20285.1	29.32
240.52840	1048.7	1.52
257.19730	29676.8	42.90
274.22305	31014.8	44.83
275.54088	1043.7	1.51
308.37479	968.1	1.40
315.49292	972.4	1.41
321.33520	1143.4	1.65
365.11727	1233.0	1.78
374.88376	1126.5	1.63
390.20370	1269.7	1.84
406.24726	3192.7	4.61
407.22810	32092.9	46.39
413.99977	1111.9	1.61
424.25548	69183.4	100.00
427.70071	1103.2	1.59