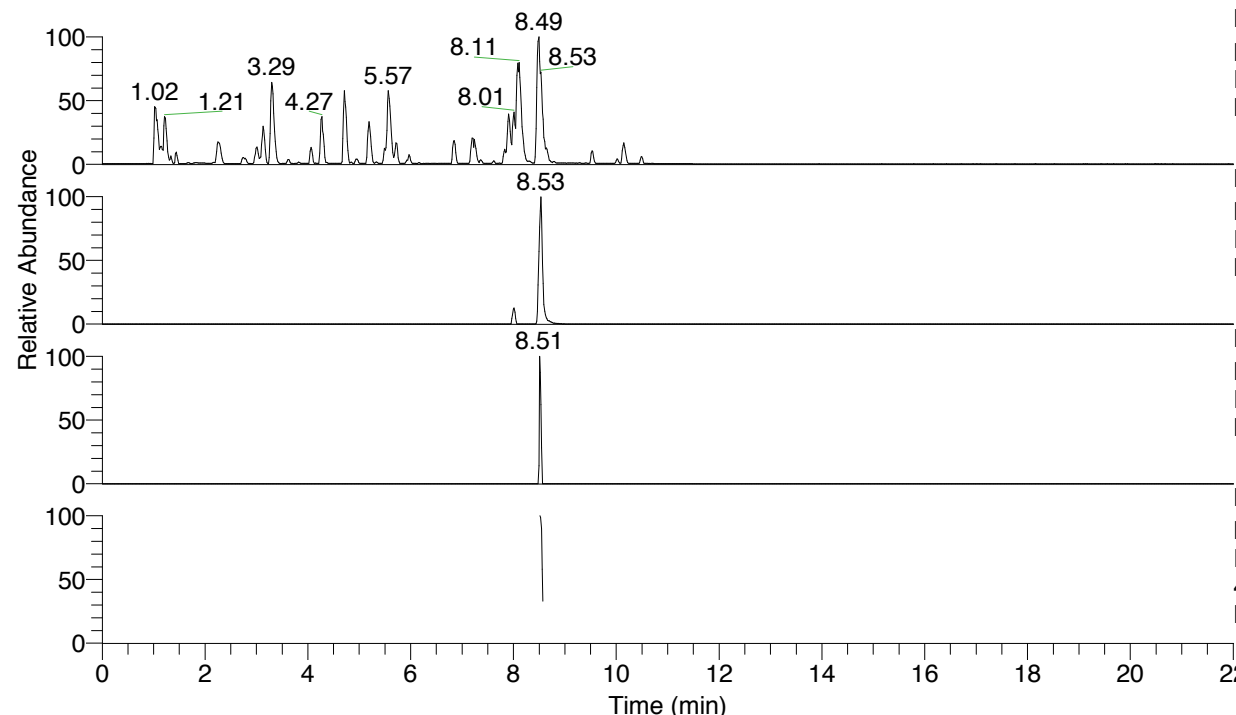


RT: 0.00 - 22.01



NL: 6.76E7
 Base Peak m/z= 100.00000-1500.00000 F:
 FTMS + p ESI Full ms [100.00-1500.00]
 MS Lcornutus

NL: 1.63E6
 Base Peak m/z= 417.25932-417.26350 F:
 FTMS + p ESI Full ms [100.00-1500.00]
 MS Lcornutus

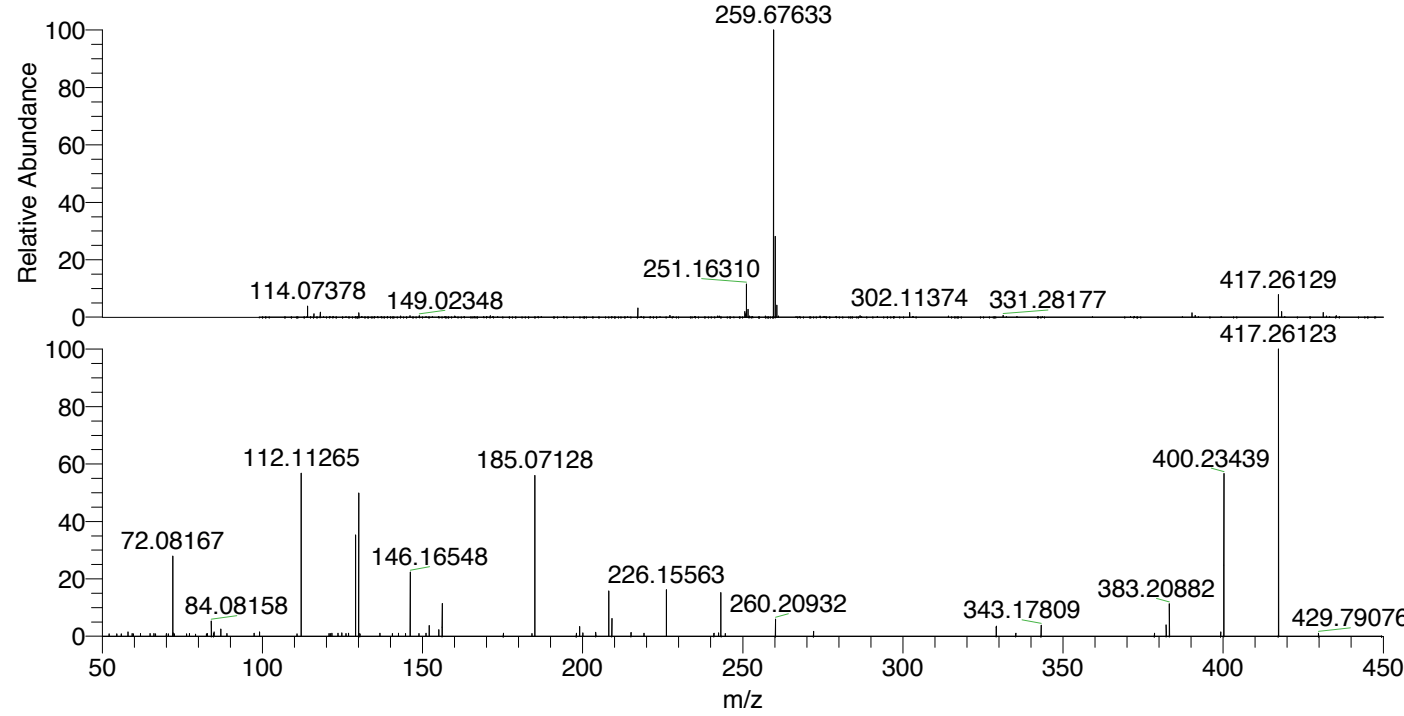
NL: 3.70E4
 Base Peak m/z= 209.13357-209.13567 F:
 FTMS + p ESI Full ms [100.00-1500.00]
 MS Lcornutus

NL: 1.18E5
 Base Peak m/z= 50.00000-1500.00000 F:
 FTMS + p ESI d Full ms2
 417.26@hcd35.00 [50.00-445.00] MS
 Lcornutus

Lcornutus#3401-3419 RT: 8.52-8.56 AV:

F: FTMS + p ESI d Full ms2 417.26 ...
 m/z= 50.00000-1000.00000

m/z	Intensity	Relative
58.06617	1462.4	1.48
59.32526	926.3	0.94
72.08167	27044.1	27.46
72.10353	1115.5	1.13
84.08158	5141.6	5.22
84.78264	931.8	0.95
84.96540	1437.6	1.46
87.05625	2460.6	2.50
97.38330	1017.8	1.03
99.09230	1393.2	1.41
112.11265	54266.2	55.10
112.11944	1063.6	1.08
121.71741	1023.4	1.04
123.65478	1017.1	1.03
124.84294	1136.8	1.15
126.92242	1083.3	1.10
129.13922	34280.6	34.81
130.06537	48318.1	49.06
130.45739	919.7	0.93
136.68467	997.4	1.01
140.57731	925.8	0.94
142.52299	969.8	0.98
146.16548	21819.8	22.16
151.08850	983.3	1.00
152.07103	3533.9	3.59
155.08237	2156.7	2.19
156.15007	11114.4	11.29
175.24503	1051.1	1.07
185.07128	53404.1	54.23
198.03337	1026.1	1.04
199.08730	3301.4	3.35
200.07268	1136.4	1.15
204.11713	1283.6	1.30
208.14541	15074.7	15.31
209.12847	5880.7	5.97
215.11817	1200.6	1.22
219.15378	968.1	0.98
226.15563	15567.5	15.81
241.00756	1012.0	1.03
242.46544	1089.8	1.11
243.18211	14496.6	14.72
244.56278	954.2	0.97
260.20932	5723.2	5.81
272.10463	1666.7	1.69
329.16281	3357.3	3.41
335.25884	1000.9	1.02
343.17809	3749.6	3.81
378.55536	1074.4	1.09
382.22458	3778.2	3.84
383.20882	11219.2	11.39
399.24582	1413.5	1.44
400.23439	53832.7	54.66
417.26123	98484.0	100.00
417.31163	1428.8	1.45
429.79076	1024.0	1.04



NL: 1.96E7
 Lcornutus#3409 RT: 8.53
 AV: 1 T: FTMS + p ESI
 Full ms [100.00-1500.00]

NL: 9.49E4
 Lcornutus#3401-3421 RT:
 8.52-8.56 AV: 4 F: FTMS
 + p ESI d Full ms2
 417.26@hcd35.00
 [50.00-445.00]

Lcornutus#3401-3419 RT: 8.52-8.56 AV: 4

F: FTMS + p ESI d Full ms2 417.26@hcd35.00 [50.00-445.00]

m/z= 50.00000-1000.00000

m/z	Intensity	Relative
52.15091	764.0	0.78
54.57687	829.6	0.84
55.98890	760.1	0.77
58.06617	1462.4	1.48
59.32526	926.3	0.94
59.73823	758.8	0.77
61.96442	896.4	0.91
64.94656	884.3	0.90
66.16675	862.1	0.88
66.60631	837.4	0.85
69.99357	887.1	0.90
70.68429	816.2	0.83
72.08167	27044.1	27.46
72.10353	1115.5	1.13
72.55891	839.8	0.85
76.31335	797.6	0.81
77.21439	851.0	0.86
79.09857	734.9	0.75
82.51181	825.5	0.84
82.81042	860.6	0.87
84.08158	5141.6	5.22
84.78264	931.8	0.95
84.96540	1437.6	1.46
87.05625	2460.6	2.50
88.95304	881.4	0.89
97.38330	1017.8	1.03
99.09230	1393.2	1.41
110.86147	860.4	0.87
112.11265	54266.2	55.10
112.11944	1063.6	1.08
120.83551	914.5	0.93
121.19838	888.1	0.90
121.71741	1023.4	1.04
123.65478	1017.1	1.03
124.84294	1136.8	1.15
126.10956	899.0	0.91
126.88174	861.8	0.88
126.92242	1083.3	1.10
129.13922	34280.6	34.81

Lcornutus#3401-3419 RT: 8.52-8.56 AV: 4

F: FTMS + p ESI d Full ms2 417.26@hcd35.00 [50.00-445.00]

m/z= 50.00000-1000.00000

m/z	Intensity	Relative
130.06537	48318.1	49.06
130.45739	919.7	0.93
136.68467	997.4	1.01
140.57731	925.8	0.94
142.52299	969.8	0.98
144.71900	877.7	0.89
146.16548	21819.8	22.16
148.92487	902.6	0.92
151.08850	983.3	1.00
152.07103	3533.9	3.59
155.08237	2156.7	2.19
156.15007	11114.4	11.29
175.24503	1051.1	1.07
184.16113	907.7	0.92
185.07128	53404.1	54.23
198.03337	1026.1	1.04
199.08730	3301.4	3.35
200.07268	1136.4	1.15
204.11713	1283.6	1.30
208.14541	15074.7	15.31
209.12847	5880.7	5.97
215.11817	1200.6	1.22
219.15378	968.1	0.98
226.15563	15567.5	15.81
241.00756	1012.0	1.03
242.46544	1089.8	1.11
243.18211	14496.6	14.72
244.56278	954.2	0.97
260.20932	5723.2	5.81
272.10463	1666.7	1.69
329.16281	3357.3	3.41
335.25884	1000.9	1.02
343.17809	3749.6	3.81
378.55536	1074.4	1.09
382.22458	3778.2	3.84
383.20882	11219.2	11.39
399.24582	1413.5	1.44
400.23439	53832.7	54.66
417.26123	98484.0	100.00

Lcornutus#3401-3419 RT: 8.52-8.56 AV: 4

F: FTMS + p ESI d Full ms2 417.26@hcd35.00 [50.00-445.00]

m/z= 50.00000-1000.00000

m/z	Intensity	Relative
417.31163	1428.8	1.45
429.79076	1024.0	1.04