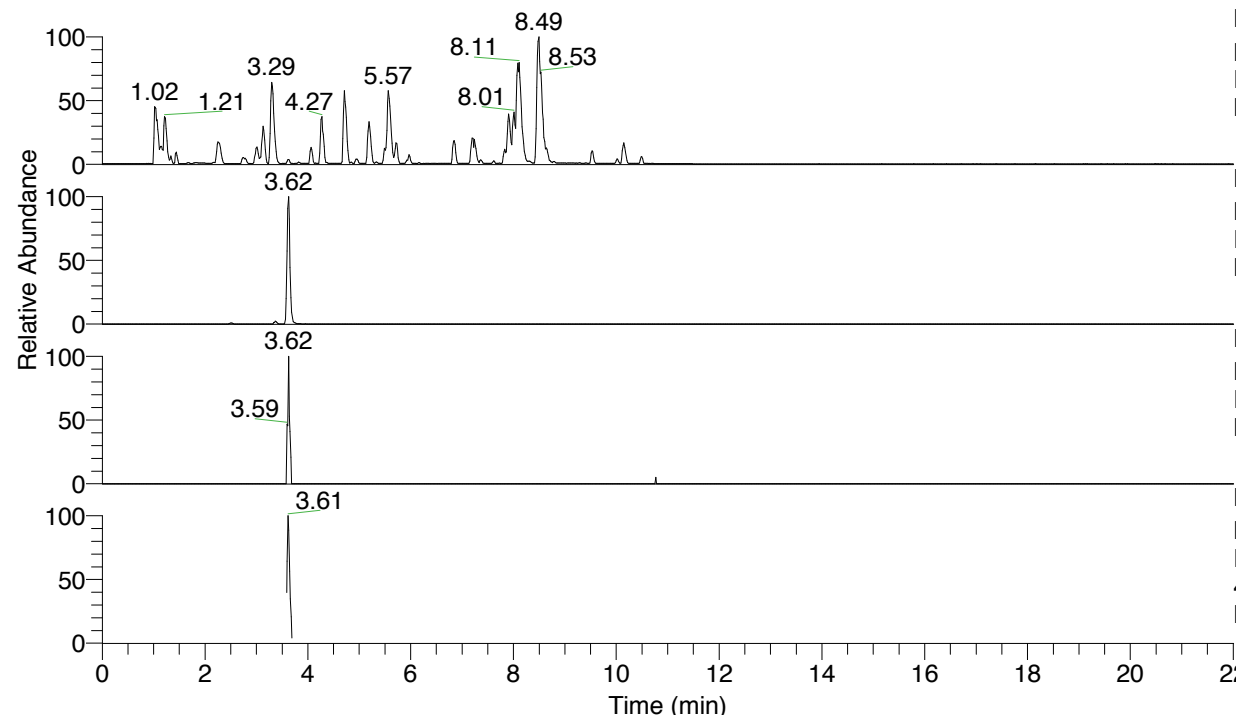


RT: 0.00 - 22.01



NL: 6.76E7
 Base Peak m/z= 100.00000-1500.00000 F:
 FTMS + p ESI Full ms [100.00-1500.00]
 MS Lcornutus

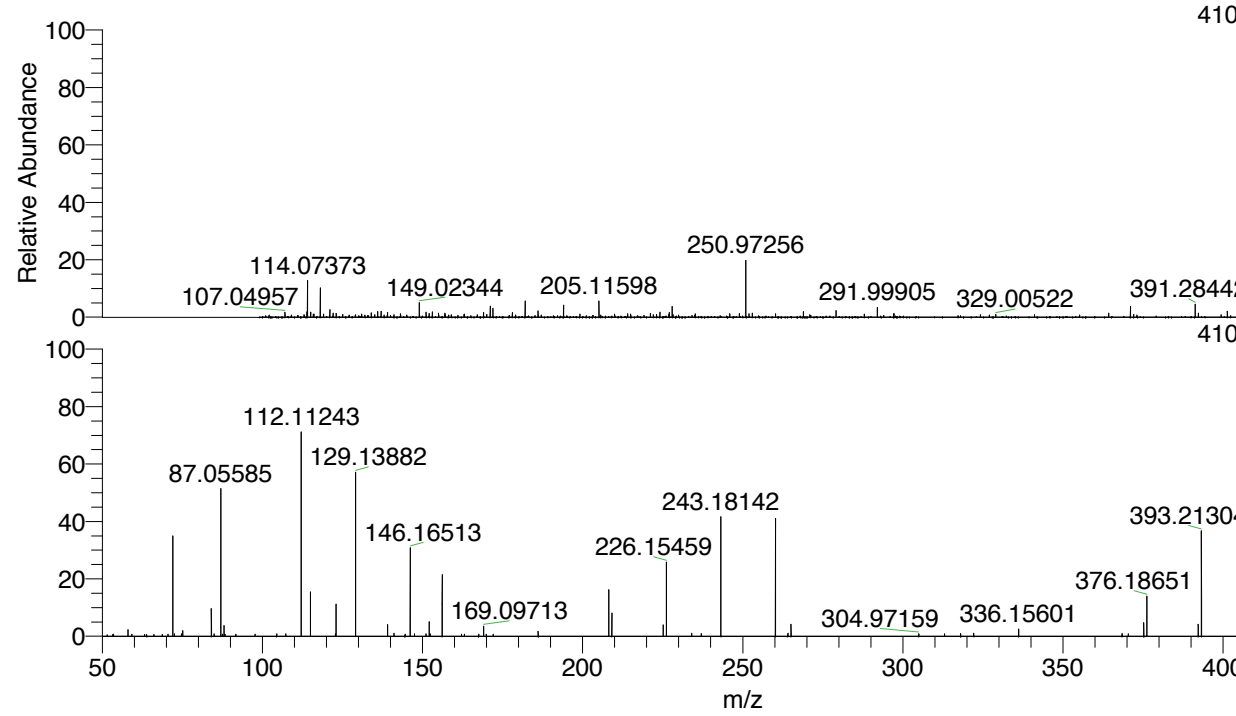
NL: 2.70E6
 Base Peak m/z= 410.23829-410.24239 F:
 FTMS + p ESI Full ms [100.00-1500.00]
 MS Lcornutus

NL: 1.78E4
 Base Peak m/z= 205.62305-205.62511 F:
 FTMS + p ESI Full ms [100.00-1500.00]
 MS Lcornutus

NL: 1.65E5
 Base Peak m/z= 50.00000-1500.00000 F:
 FTMS + p ESI d Full ms2
 410.24@hcd35.00 [50.00-435.00] MS
 Lcornutus

Lcornutus#1436-1454 RT: 3.60-3.64 AV:
 F: FTMS + p ESI d Full ms2 410.24 ...
 m/z= 50.00000-1000.00000

m/z	Intensity	Relative
58.06606	2796.2	2.27
70.58048	922.5	0.75
72.08150	43067.8	35.02
72.58241	978.9	0.80
74.74230	1057.7	0.86
75.09230	2428.1	1.97
84.08159	12137.3	9.87
84.16903	904.8	0.74
84.97696	1056.5	0.86
87.05585	63498.9	51.63
88.01562	1062.7	0.86
88.04005	4589.0	3.73
88.32143	910.7	0.74
91.75851	937.2	0.76
104.47542	1013.3	0.82
107.35068	984.4	0.80
112.11243	86979.1	70.73
115.05078	18852.0	15.33
122.85115	981.2	0.80
123.04460	13762.2	11.19
129.13882	71313.1	57.99
139.12309	5116.2	4.16
141.10229	1257.2	1.02
146.16513	39080.2	31.78
147.48133	987.4	0.80
151.08718	1000.1	0.81
152.07061	6209.2	5.05
152.38177	979.5	0.80
156.14985	26354.7	21.43
162.21190	902.9	0.73
169.09713	4446.2	3.62
169.93457	970.8	0.79
186.12418	2081.3	1.69
208.14464	19792.8	16.09
209.12881	9825.3	7.99
225.17233	4933.4	4.01
226.15459	31625.7	25.72
234.05106	1296.7	1.05
237.08806	1198.9	0.97
243.18142	50793.4	41.30
260.20788	50038.8	40.69
264.09736	1354.8	1.10
265.08215	5067.1	4.12
304.97159	992.4	0.81
313.02151	1013.3	0.82
318.04916	1172.9	0.95
322.13792	1304.8	1.06
336.15601	3129.0	2.54
368.45073	1111.4	0.90
370.39205	1048.5	0.85
375.20406	5719.1	4.65
376.18651	17110.7	13.91
392.22848	5201.6	4.23
393.21304	46293.1	37.64
410.23934	122978.1	100.00



NL: 2.54E6
 Lcornutus#1447 RT: 3.62
 AV: 1 T: FTMS + p ESI
 Full lock ms
 [100.00-1500.00]

NL: 1.22E5
 Lcornutus#1434-1457 RT:
 3.60-3.64 AV: 4 F: FTMS
 + p ESI d Full ms2
 410.24@hcd35.00
 [50.00-435.00]

Lcornutus#1436-1454 RT: 3.60-3.64 AV: 4

F: FTMS + p ESI d Full ms2 410.24@hcd35.00 [50.00-435.00]

m/z= 50.00000-1000.00000

m/z	Intensity	Relative
51.51085	668.3	0.54
53.31057	697.9	0.57
53.40399	850.8	0.69
53.52766	681.9	0.55
58.06606	2796.2	2.27
59.22031	865.0	0.70
63.25190	757.9	0.62
63.89107	759.8	0.62
66.11893	822.0	0.67
66.18024	784.7	0.64
68.74584	814.3	0.66
70.58048	922.5	0.75
72.08150	43067.8	35.02
72.58241	978.9	0.80
74.74230	1057.7	0.86
75.09230	2428.1	1.97
84.08159	12137.3	9.87
84.16903	904.8	0.74
84.97696	1056.5	0.86
87.05585	63498.9	51.63
87.48919	880.3	0.72
88.01562	1062.7	0.86
88.04005	4589.0	3.73
88.32143	910.7	0.74
91.75851	937.2	0.76
97.74994	901.5	0.73
104.47542	1013.3	0.82
107.35068	984.4	0.80
112.11243	86979.1	70.73
115.05078	18852.0	15.33
122.85115	981.2	0.80
123.04460	13762.2	11.19
129.13882	71313.1	57.99
139.12309	5116.2	4.16
141.10229	1257.2	1.02
144.56060	858.7	0.70
146.16513	39080.2	31.78
147.48133	987.4	0.80
151.08718	1000.1	0.81

Lcornutus#1436-1454 RT: 3.60-3.64 AV: 4

F: FTMS + p ESI d Full ms2 410.24@hcd35.00 [50.00-435.00]

m/z= 50.00000-1000.00000

m/z	Intensity	Relative
152.07061	6209.2	5.05
152.38177	979.5	0.80
156.14985	26354.7	21.43
162.21190	902.9	0.73
163.08577	896.7	0.73
167.54962	887.5	0.72
169.09713	4446.2	3.62
169.93457	970.8	0.79
172.10944	899.7	0.73
186.12418	2081.3	1.69
208.14464	19792.8	16.09
209.12881	9825.3	7.99
225.17233	4933.4	4.01
226.15459	31625.7	25.72
234.05106	1296.7	1.05
237.08806	1198.9	0.97
243.18142	50793.4	41.30
260.20788	50038.8	40.69
264.09736	1354.8	1.10
265.08215	5067.1	4.12
304.97159	992.4	0.81
313.02151	1013.3	0.82
318.04916	1172.9	0.95
322.13792	1304.8	1.06
336.15601	3129.0	2.54
368.45073	1111.4	0.90
370.39205	1048.5	0.85
375.20406	5719.1	4.65
376.18651	17110.7	13.91
392.22848	5201.6	4.23
393.21304	46293.1	37.64
410.23934	122978.1	100.00