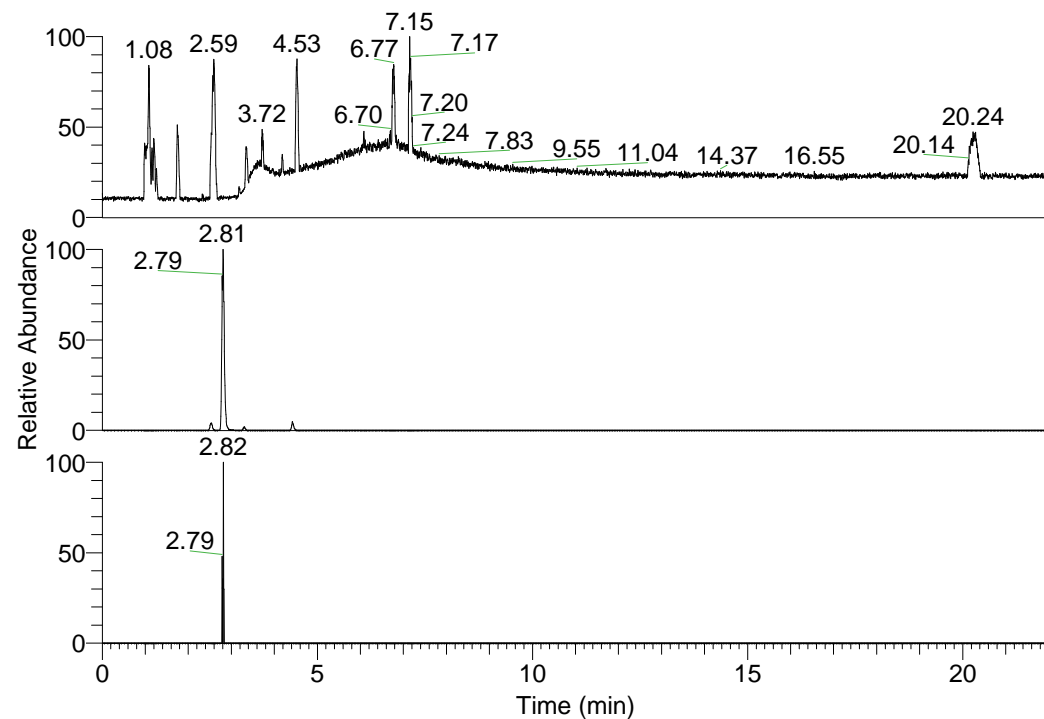


RT: 0.00 - 22.01



NL: 6.93E7
 Base Peak m/z=
 100.00000-1500.00000 F:
 FTMS + p ESI Full ms
 [100.00-1500.00] MS
 Lcornutus_HDX

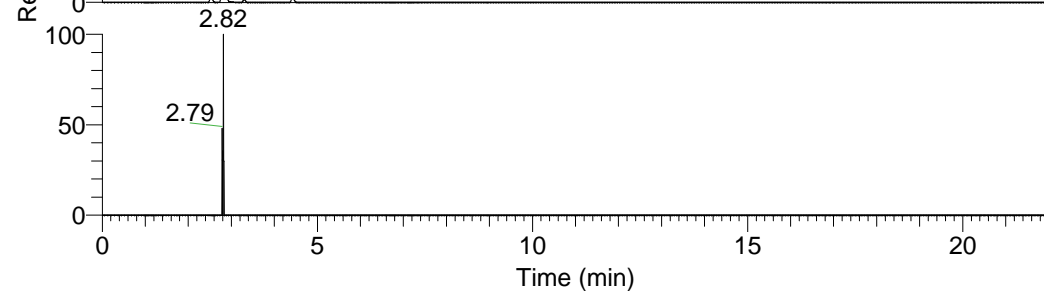
Lcornutus_HDX#433 RT: 2.81
 T: FTMS + p ESI Full ms [100.00-1500.00]

m/z = 403.00000-404.00000

m/z	Intensity	Relative	Delta (ppm)	Composition
403.30142	4301620.0	100.00	0.12	C ₁₉ H ₂₃ ² H ₉ O ₄ N ₅
			-3.71	C ₁₉ H ₂₅ ² H ₈ O ₄ N ₅
			3.96	C ₁₉ H ₂₁ ² H ₁₀ O ₄ N ₅

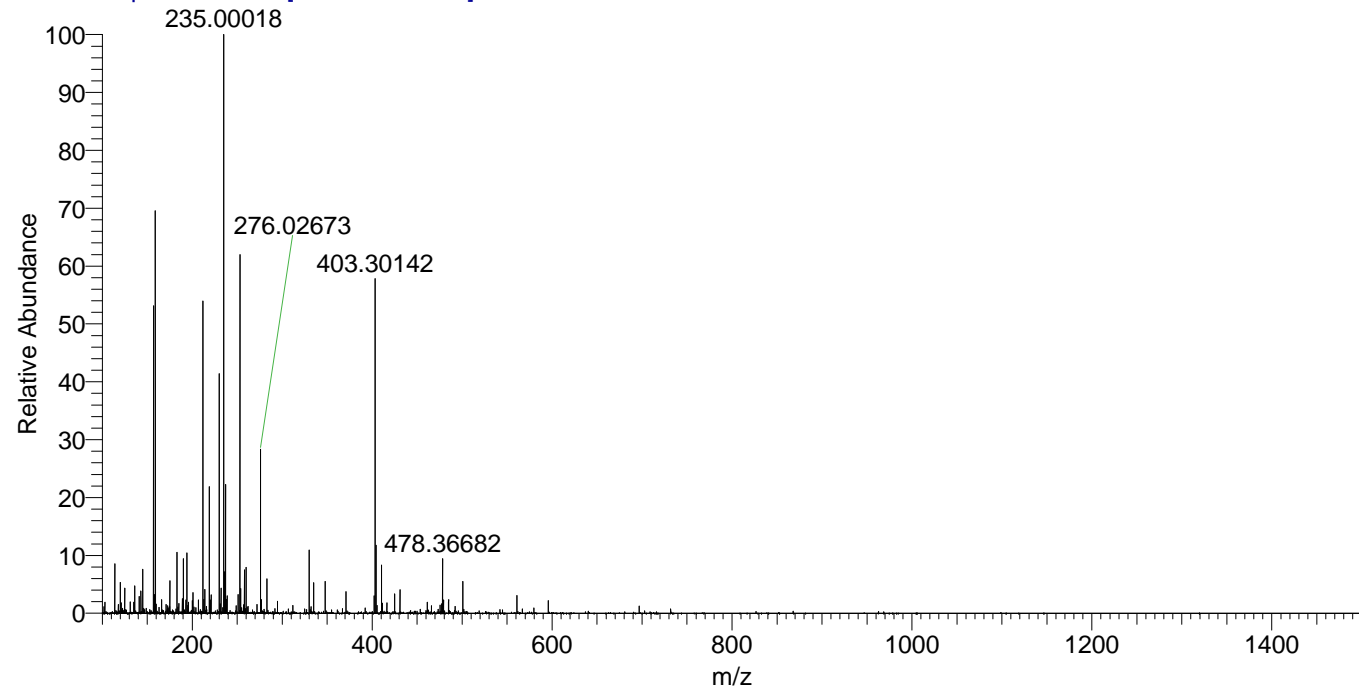


NL: 4.30E6
 Base Peak m/z=
 403.29990-403.30394 F:
 FTMS + p ESI Full ms
 [100.00-1500.00] MS
 Lcornutus_HDX



NL: 8.16E3
 Base Peak m/z=
 202.65700-202.65902 F:
 FTMS + p ESI Full ms
 [100.00-1500.00] MS
 Lcornutus_HDX

Lcornutus_HDX #433 RT: 2.81 AV: 1 NL: 7.12E6
 T: FTMS + p ESI Full ms [100.00-1500.00]



Lcornutus_HDX #433 RT: 2.81 AV: 1 NL: 4.12E6
 T: FTMS + p ESI Full ms [100.00-1500.00]

