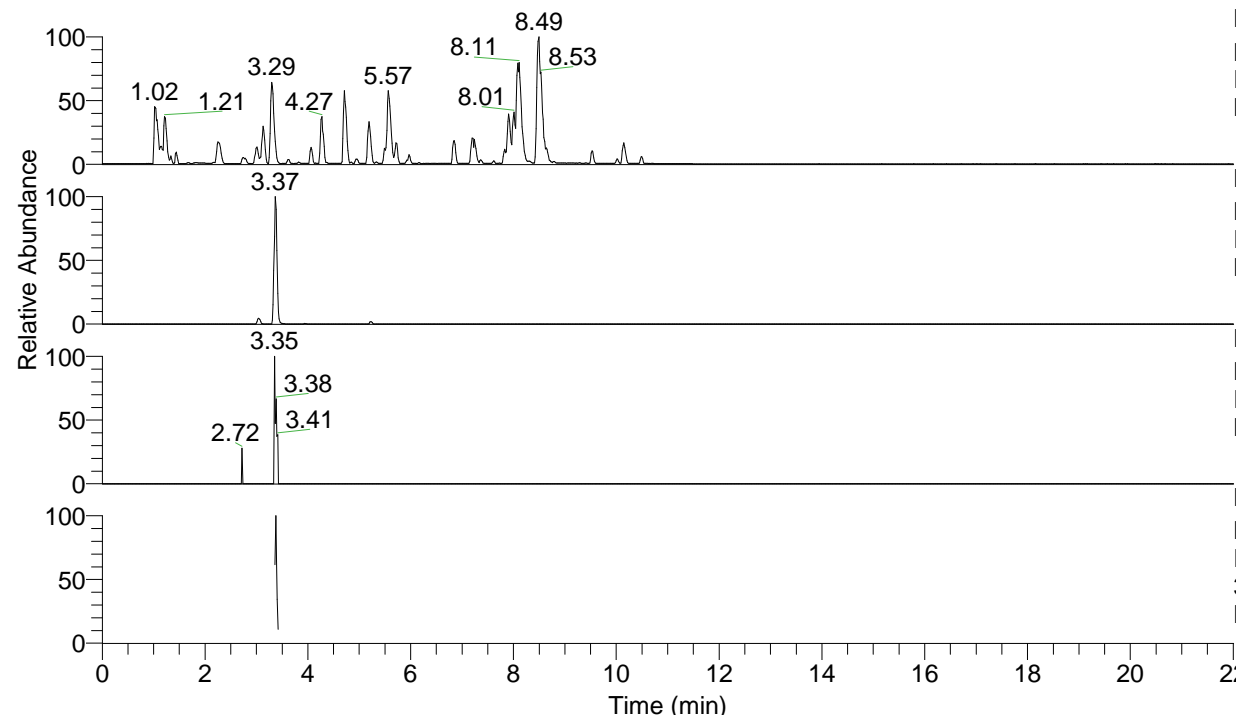


RT: 0.00 - 22.01



NL: 6.76E7  
 Base Peak m/z= 100.00000-1500.00000 F:  
 FTMS + p ESI Full ms [100.00-1500.00]  
 MS Lcornutus

NL: 2.82E6  
 Base Peak m/z= 394.24346-394.24740 F:  
 FTMS + p ESI Full ms [100.00-1500.00]  
 MS Lcornutus

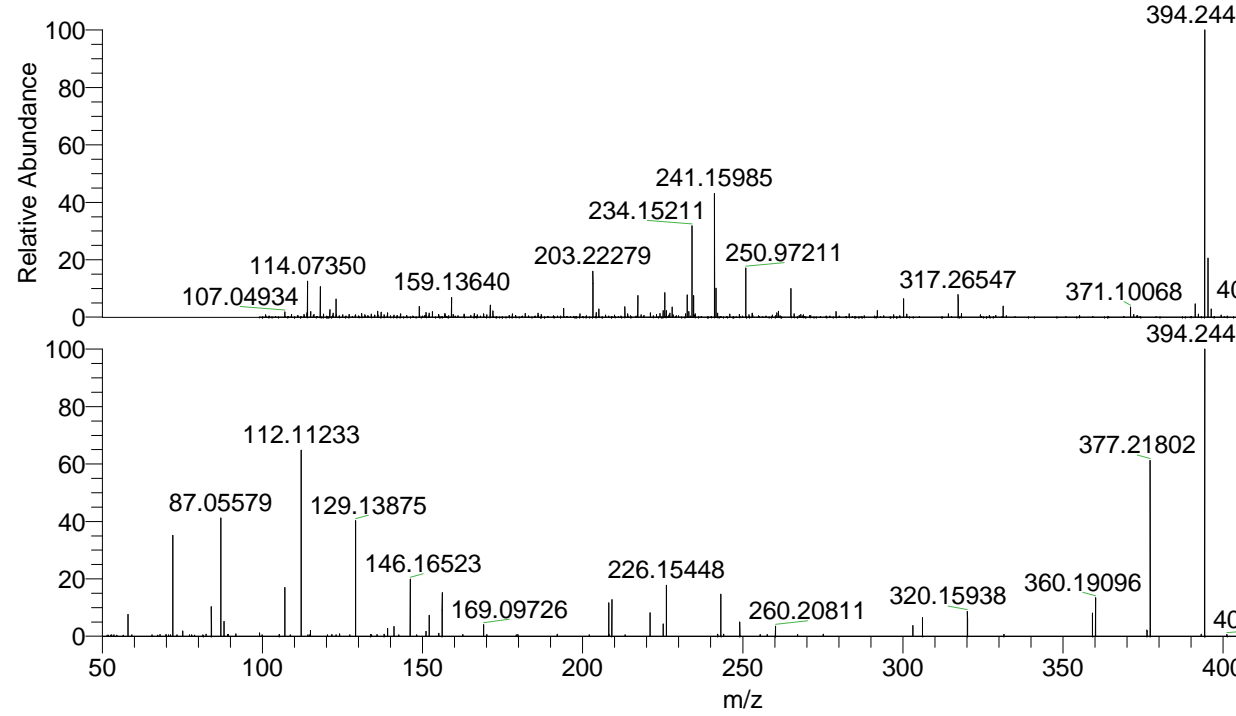
NL: 3.99E3  
 Base Peak m/z= 197.62564-197.62762 F:  
 FTMS + p ESI Full ms [100.00-1500.00]  
 MS Lcornutus

NL: 2.66E5  
 Base Peak m/z= 50.00000-1500.00000 F:  
 FTMS + p ESI d Full ms2  
 394.24@hcd35.00 [50.00-420.00] MS  
 Lcornutus

Lcornutus#1343-1366 RT: 3.36-3.42 AV:

F: FTMS + p ESI d Full ms2 394.24 ...  
 m/z= 50.00000-1000.00000

m/z	Intensity	Relative
58.06593	10537.1	7.64
68.02584	830.4	0.60
72.08144	49289.2	35.72
75.09251	2463.3	1.79
82.43745	936.7	0.68
84.08138	14283.9	10.35
87.05579	56453.3	40.91
88.03986	7325.2	5.31
89.10806	925.6	0.67
91.75189	1203.7	0.87
99.09205	1631.8	1.18
107.04948	23419.7	16.97
112.10510	1067.7	0.77
112.11233	89061.2	64.54
115.05069	2847.3	2.06
124.07588	1229.7	0.89
129.13875	56639.8	41.05
133.85796	790.9	0.57
138.05366	1056.5	0.77
139.12278	3857.3	2.80
141.10226	4814.2	3.49
146.16523	28080.9	20.35
151.08641	2291.9	1.66
152.07071	9956.7	7.22
155.08100	1465.0	1.06
156.14959	21226.2	15.38
162.62849	832.4	0.60
169.09726	5753.1	4.17
170.07934	851.6	0.62
192.10256	928.7	0.67
208.14475	15985.2	11.58
208.22937	830.5	0.60
209.12821	17470.1	12.66
221.09232	11272.6	8.17
225.17109	5918.4	4.29
226.15448	24292.2	17.61
242.19620	945.7	0.69
243.18183	20108.6	14.57
244.05031	987.9	0.72
249.08729	6940.7	5.03
255.45028	858.6	0.62
257.67257	829.5	0.60
260.20811	4838.4	3.51
275.14287	1029.6	0.75
303.13318	5110.4	3.70
306.14515	8931.8	6.47
320.15938	12193.8	8.84
359.20746	11111.5	8.05
360.19096	18546.1	13.44
376.23254	3003.3	2.18
377.21802	83977.0	60.86
393.17390	926.8	0.67
394.24485	137984.2	100.00
394.29634	1158.7	0.84
401.18273	857.8	0.62



NL: 2.74E6  
 Lcornutus#1345 RT: 3.37  
 AV: 1 T: FTMS + p ESI  
 Full lock ms  
 [100.00-1500.00]

NL: 1.36E5  
 Lcornutus#1338-1367 RT:  
 3.36-3.42 AV: 5 F: FTMS  
 + p ESI d Full ms2  
 394.24@hcd35.00  
 [50.00-420.00]