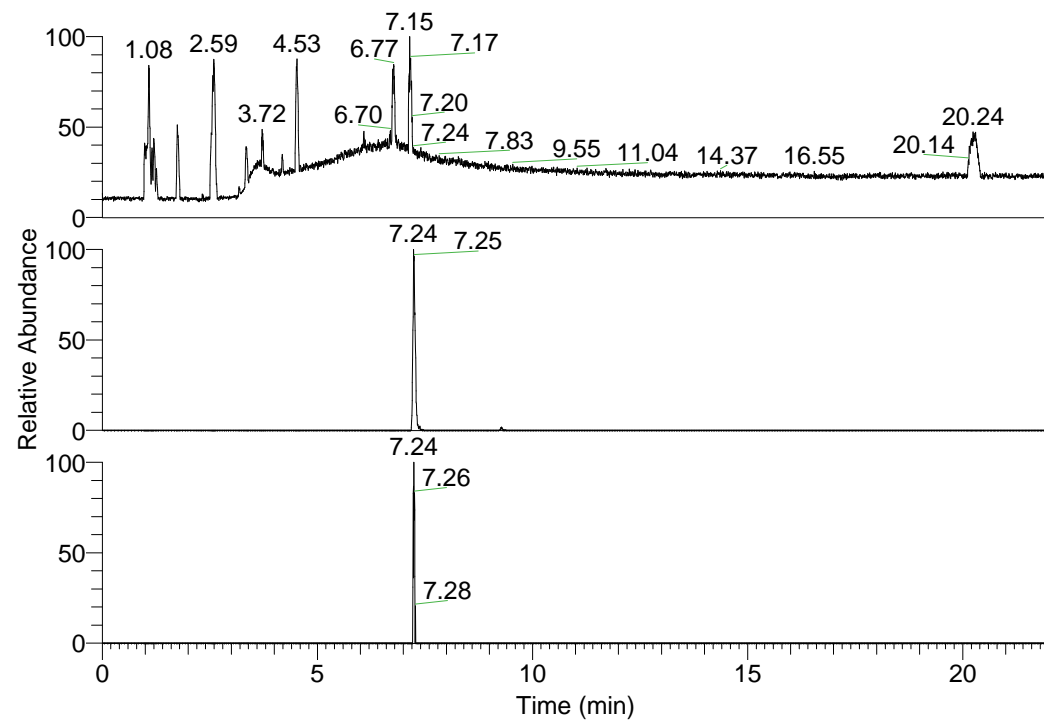


RT: 0.00 - 22.01



NL: 6.93E7  
 Base Peak m/z=  
 100.00000-1500.00000 F:  
 FTMS + p ESI Full ms  
 [100.00-1500.00] MS  
 Lcornutus\_HDX

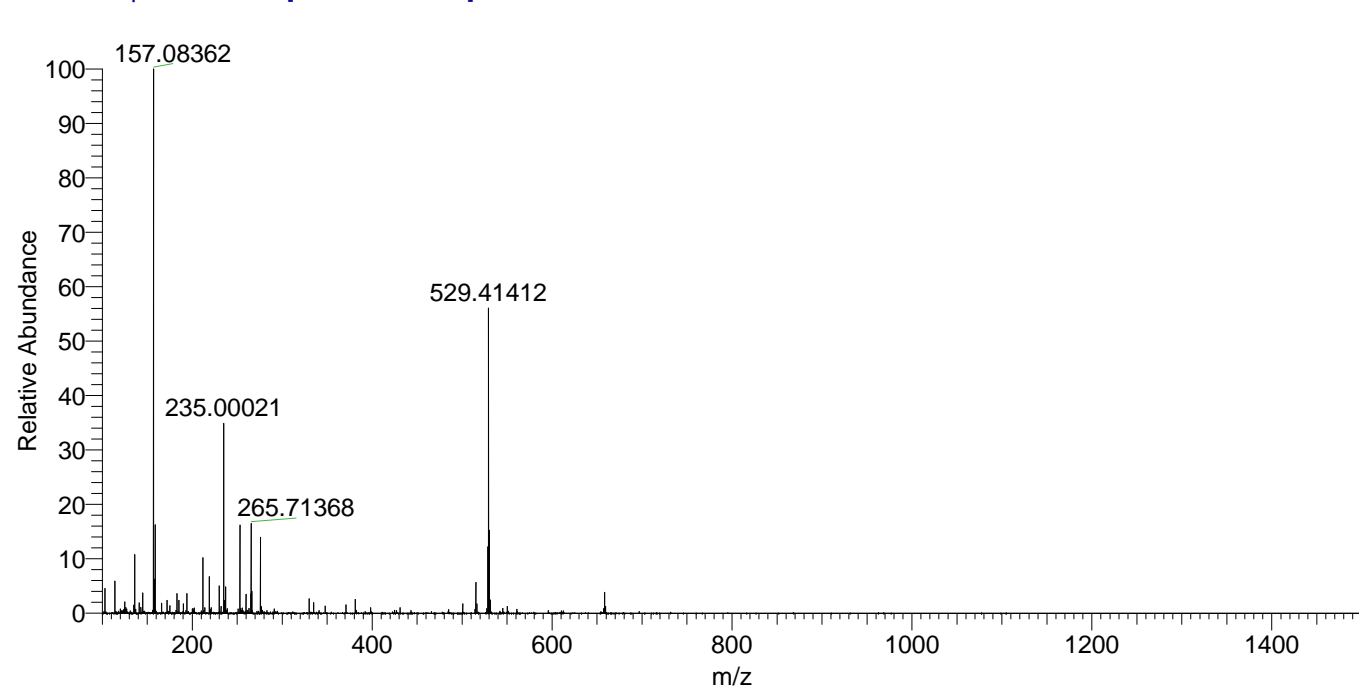
Lcornutus\_HDX#1156 RT: 7.24  
 T: FTMS + p ESI Full ms [100.00-1500.00]  
 m/z= 381.00000-382.00000

m/z	Intensity	Relative	Delta (ppm)	Composition
381.33542	714897.7	100.00	0.12	C <sub>21</sub> H <sub>29</sub> <sup>2</sup> H <sub>7</sub> ON <sub>5</sub>
			-3.94	C <sub>21</sub> H <sub>31</sub> <sup>2</sup> H <sub>6</sub> ON <sub>5</sub>
			4.18	C <sub>21</sub> H <sub>27</sub> <sup>2</sup> H <sub>8</sub> ON <sub>5</sub>

NL: 7.15E5  
 Base Peak m/z=  
 381.33401-381.33783 F:  
 FTMS + p ESI Full ms  
 [100.00-1500.00] MS  
 Lcornutus\_HDX

NL: 2.01E4  
 Base Peak m/z=  
 191.67405-191.67597 F:  
 FTMS + p ESI Full ms  
 [100.00-1500.00] MS  
 Lcornutus\_HDX

Lcornutus\_HDX #1156 RT: 7.24 AV: 1 NL: 2.67E7  
 T: FTMS + p ESI Full ms [100.00-1500.00]



Lcornutus\_HDX #1156 RT: 7.24 AV: 1 NL: 6.79E5  
 T: FTMS + p ESI Full ms [100.00-1500.00]

