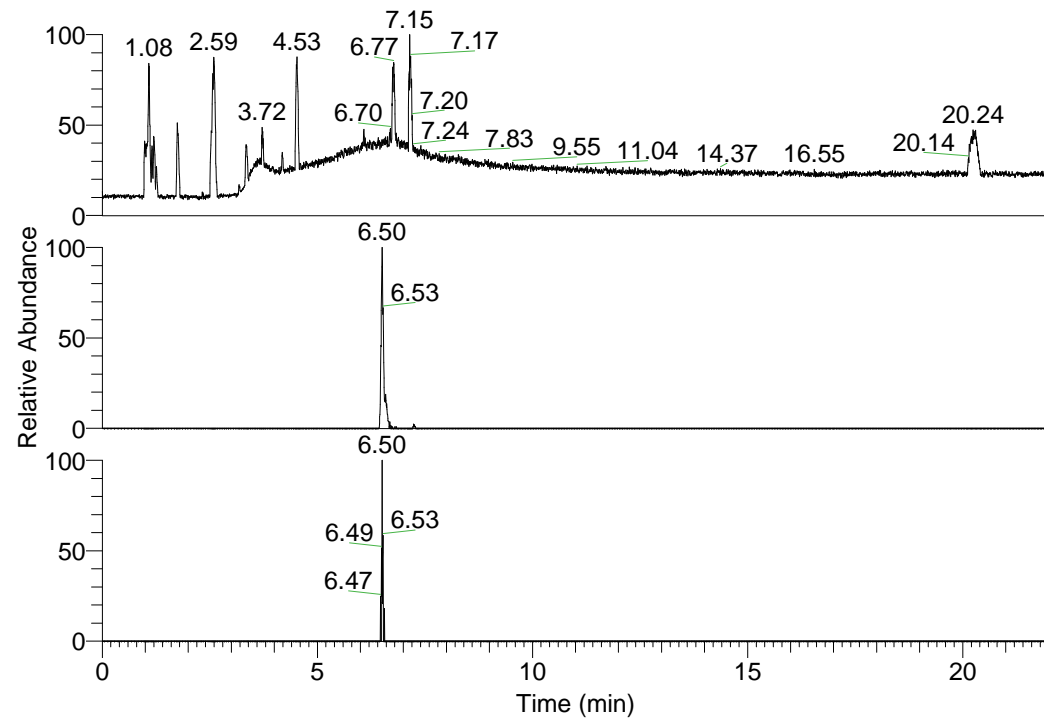


RT: 0.00 - 22.01



NL: 6.93E7
 Base Peak m/z=
 100.00000-1500.00000 F:
 FTMS + p ESI Full ms
 [100.00-1500.00] MS
 Lcornutus_HDX

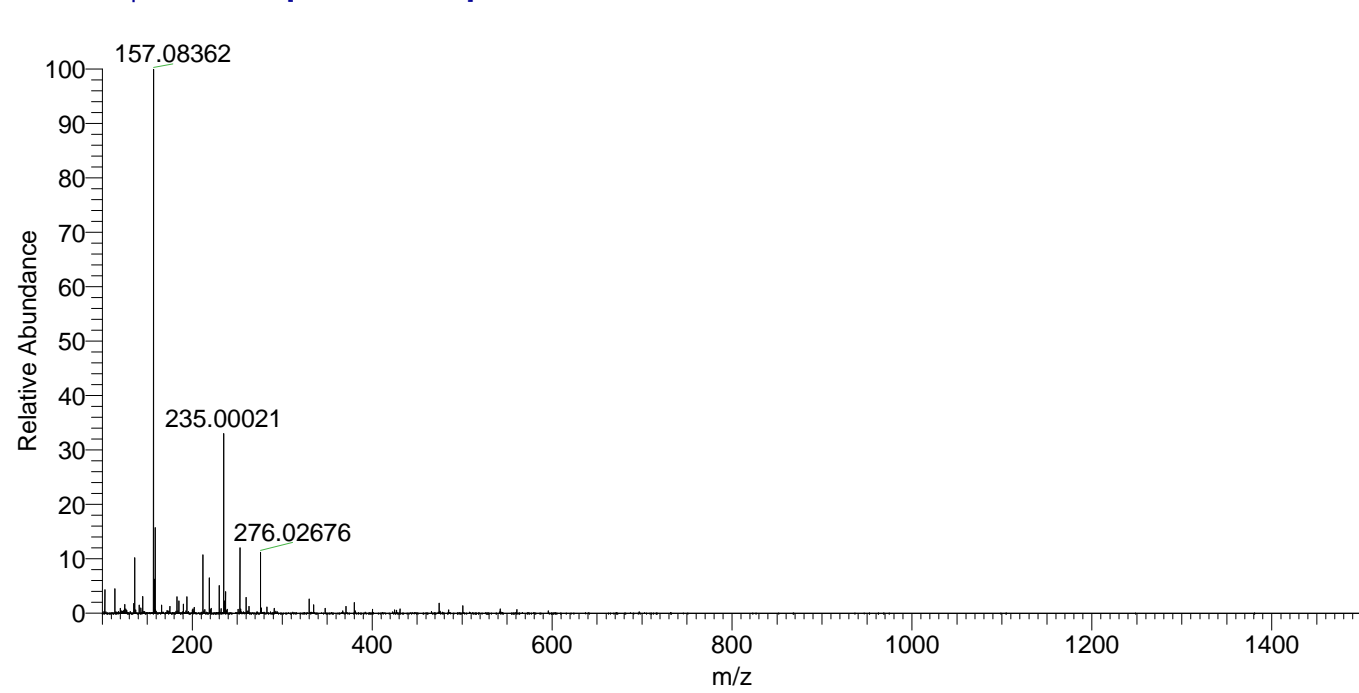
Lcornutus_HDX#1030 RT: 6.50
 T: FTMS + p ESI Full ms [100.00-1500.00]
 m/z= 380.00000-381.00000

m/z	Intensity	Relative	Delta (ppm)	Composition
380.32913	583674.1	100.00	0.09	C ₂₁ H ₃₀ ² H ₆ ON ₅
			-3.98	C ₂₁ H ₃₂ ² H ₅ ON ₅
			4.16	C ₂₁ H ₂₈ ² H ₇ ON ₅

NL: 6.54E5
 Base Peak m/z=
 380.32775-380.33155 F:
 FTMS + p ESI Full ms
 [100.00-1500.00] MS
 Lcornutus_HDX

NL: 2.59E4
 Base Peak m/z=
 191.17091-191.17283 F:
 FTMS + p ESI Full ms
 [100.00-1500.00] MS
 Lcornutus_HDX

Lcornutus_HDX #1030 RT: 6.50 AV: 1 NL: 2.89E7
 T: FTMS + p ESI Full ms [100.00-1500.00]



Lcornutus_HDX #1030 RT: 6.50 AV: 1 NL: 5.61E5
 T: FTMS + p ESI Full ms [100.00-1500.00]

