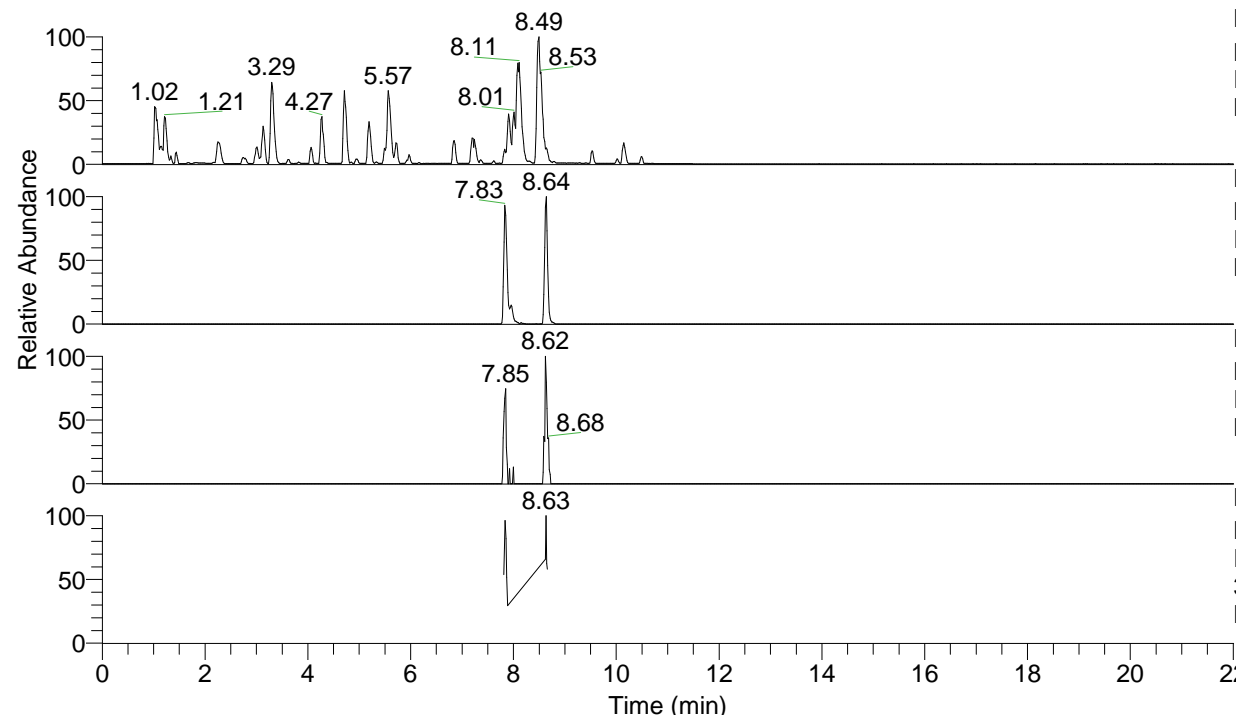


RT: 0.00 - 22.01



NL: 6.76E7
 Base Peak m/z= 100.00000-1500.00000 F:
 FTMS + p ESI Full ms [100.00-1500.00]
 MS Lcornutus

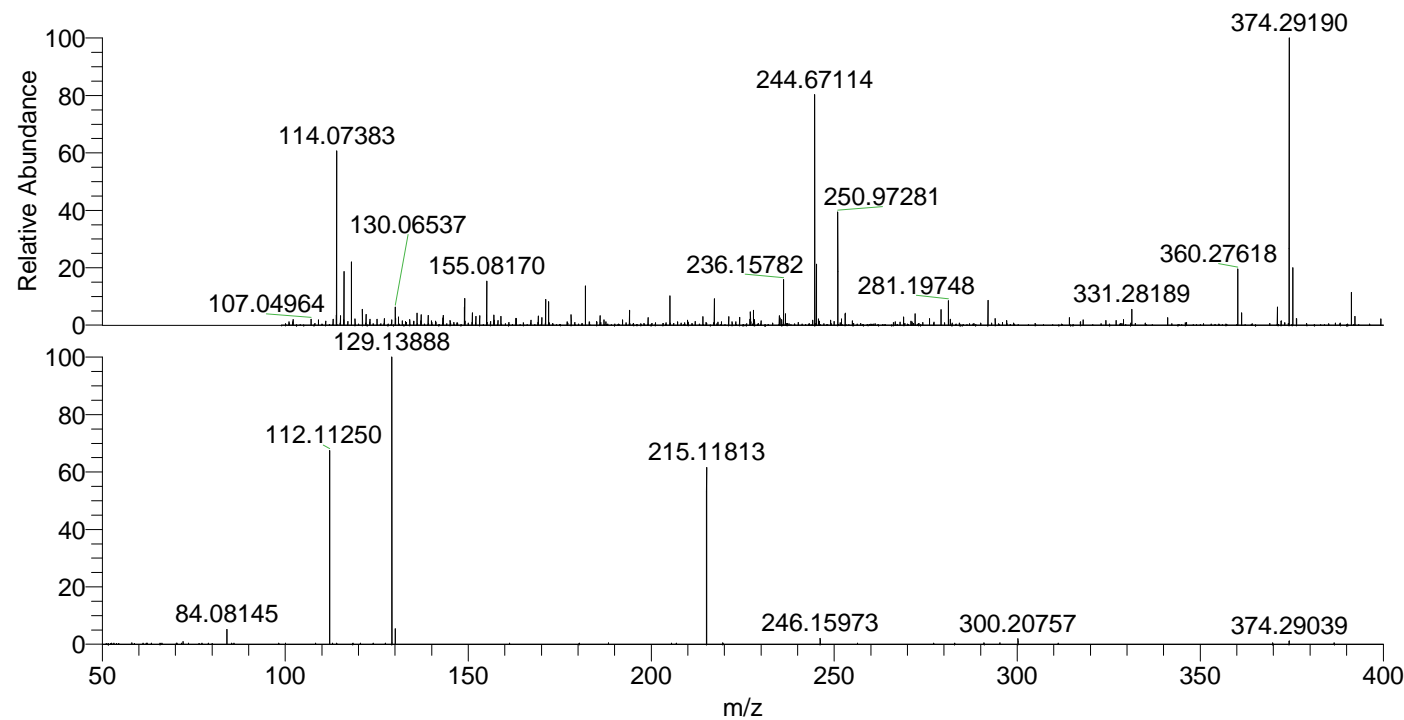
NL: 1.28E6
 Base Peak m/z= 374.29012-374.29386 F:
 FTMS + p ESI Full ms [100.00-1500.00]
 MS Lcornutus

NL: 1.98E4
 Base Peak m/z= 187.64897-187.65085 F:
 FTMS + p ESI Full ms [100.00-1500.00]
 MS Lcornutus

NL: 2.70E5
 Base Peak m/z= 50.00000-1500.00000 F:
 FTMS + p ESI d Full ms2
 374.29@hcd35.00 [50.00-400.00] MS
 Lcornutus

Lcornutus#3114-3136 RT: 7.81-7.87 AV:
 F: FTMS + p ESI d Full ms2 374.29 ...
 m/z= 50.00000-1000.00000

m/z	Intensity	Relative
72.08180	1729.7	0.97
84.08145	9236.4	5.16
112.11250	118001.0	65.95
129.13888	178922.3	100.00
130.06554	9661.3	5.40
215.11813	107656.4	60.17
246.15973	3571.8	2.00
300.20757	3405.3	1.90
374.29039	2056.6	1.15



NL: 1.15E6
 Lcornutus#3121 RT: 7.83
 AV: 1 T: FTMS + p ESI
 Full lock ms
 [100.00-1500.00]

NL: 1.74E5
 Lcornutus#3104-3140 RT:
 7.81-7.87 AV: 5 F: FTMS
 + p ESI d Full ms2
 374.29@hcd35.00
 [50.00-400.00]