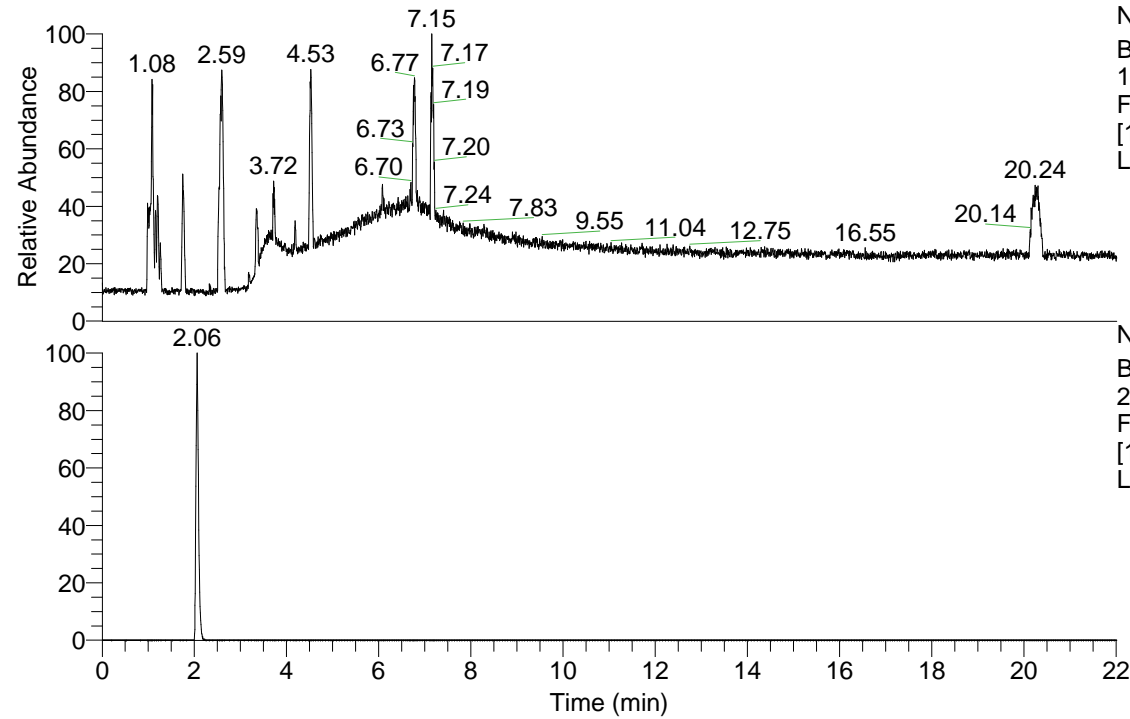


RT: 0.00 - 22.01

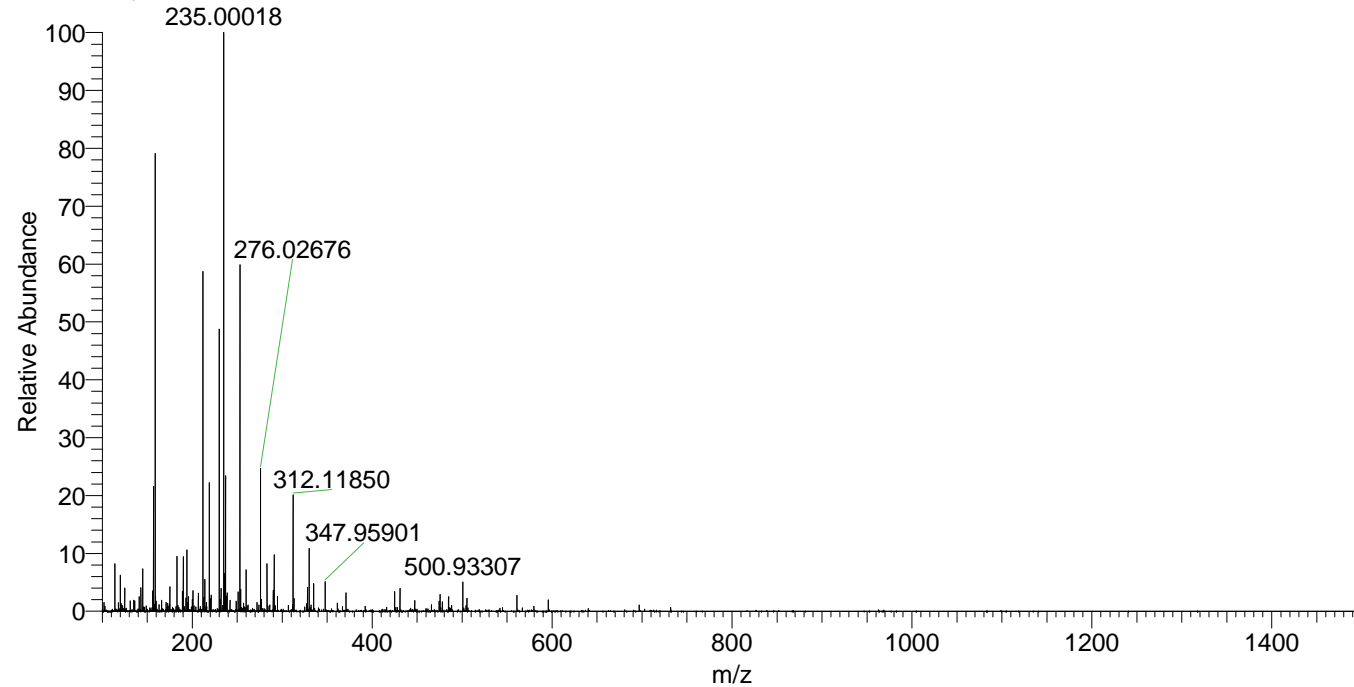


NL: 6.93E7  
Base Peak m/z=  
100.00000-1500.00000  
F: FTMS + p ESI Full ms  
[100.00-1500.00] MS  
Lcornutus\_HDX

Lcornutus\_HDX#315 RT: 2.06  
T: FTMS + p ESI Full ms [100.00-1500.00]  
m/z= 291.00000-292.00000

m/z	Intensity	Relative	Delta (ppm)	Composition
291.14282	702301.8	100.00	-0.21	C <sub>10</sub> H <sub>7</sub> <sup>2</sup> H <sub>7</sub> O <sub>5</sub> N <sub>5</sub>

Lcornutus\_HDX #315 RT: 2.06 AV: 1 NL: 7.06E6  
T: FTMS + p ESI Full ms [100.00-1500.00]



Lcornutus\_HDX #315 RT: 2.06 AV: 1 NL: 6.90E5  
T: FTMS + p ESI Full ms [100.00-1500.00]

